



Quality Wholesale Window Coverings

Contract • Hospitality • Healthcare • Residential

ph 866-753-1113 email customerservice@porterpreston.com www.portepreston.com







SHEERWEAVE
BY PHIFER



| An Introduction



SheerWeave® interior sun control fabrics provide the perfect balance of light, comfort and beauty, making them the ideal window covering solution for residential and commercial spaces alike. A sleek and functional alternative to ordinary window coverings, SheerWeave effortlessly and elegantly manages the sun's harsh heat and blinding glare.

Multi-Functional

SheerWeave filters and diffuses light while reducing glare and solar heat gain, conserving energy and helping to create a more comfortable environment. SheerWeave also helps reduce the fading of interior furnishings and flooring by protecting these surfaces from the sun's harmful effects. And unlike many window treatments, SheerWeave allows excellent outward visibility – even when shades are lowered – to maintain optimal views.

Unmatched Style

From modern, neutral hues to subtly-textured, organic weaves in warm earth tones, these fabrics are the perfect complement to any interior design scheme. SheerWeave fabrics are also available in a variety of openness factors ranging from zero to 25 percent and wide widths to cover large window openings. Simple, clean and classic, SheerWeave can be fabricated into many different types of window treatments, and the aesthetic quality of these fabrics allows them to easily pair with other draperies and window coverings.

Quality Second to None

Phifer's quality standards are among the highest in the world. SheerWeave fabrics are manufactured in our state-of-the-art facility in Tuscaloosa, Alabama USA under strict guidelines through ISO-certified production processes. From yarn coating to packaging, every step of the production process is checked to ensure only the finest quality fabrics are given the SheerWeave name.

Environmentally Responsible

At Phifer, we're committed to minimizing the impact on the environment from our manufacturing processes and finished products and incorporating environmental stewardship with our corporate goals...and yours. We use a solutions-oriented approach as we partner with individuals, businesses, the architectural and design communities and governmental agencies to achieve their individual goals of energy conservation and environmental preservation.

Phifer is the world's leader in the manufacture and sale of energy-saving sun control fabrics for both the residential and commercial markets.



| Introduction to Shading



Spanning more than 40 collections in a palette of colors, weaves and range of openness factors, Phifer's SheerWeave fabric line is sure to have a shading solution to meet your needs. Below are a few principles to consider when choosing the optimal fabric for your next window covering project:

SheerWeave fabrics reduce glare by 70%-100% based on color and openness factor, which are the most important features to consider for energy savings and light management.

Light vs. Dark Colors

SheerWeave color options range from Brite White and Bone to darker Charcoal and Chestnut tones. These color designations go beyond aesthetics and color coordination with interior décor. Lighter color fabrics provide optimum heat reduction, reflect light and illuminate the interior. Darker fabrics provide a superb view to the outside and reduce glare, making them ideal for viewing computer and television screens.

Openness Differences

The openness of a fabric refers to the weave or mesh structure and determines the amount of heat and light that enters a room. Generally, a more open fabric allows more heat and light to penetrate into the room, while tighter meshes block more heat and light. Additionally, more open fabrics help maintain better outward visibility.

SheerWeave fabrics are offered in a variety of openness factors to allow optimal light in commercial buildings or provide more privacy in settings such as healthcare facilities.





INFINITY₂[®] SUSTAINABLE FABRIC

AVERAGE OPENNESS

1%, 3% and 5%

SheerWeave Infinity₂ sustainable sun control fabrics are eco-friendly, full basketweaves designed to meet the most stringent environmental design standards. With 100% recycled content, 100% recyclable and a PVC-free composition, Infinity₂ fabrics offer the same solar heat and glare control properties as traditional SheerWeave fabrics for conserving energy, harnessing natural light and maintaining interior comfort levels.

FIRE CLASSIFICATION

NFPA 701 TM#1 (small scale), NFPA 101 (Class A Rating), CAN/ULC-S 109 (large scale), IBC Section 803.1.1 (Class A Rating)

INIFINITY₂ 3% and 5%: BS 5867 Part 2 Type B Performance

INIFINITY₂ 5%: CAN/CGSB2-4.162-M80

Fire classifications are subject to change. Please go to phiifer.com for the most current information.

BACTERIA AND FUNGAL RESISTANCE

ASTM E 2180 and ASTM G21

ENVIRONMENTAL CERTIFICATION

Certified to GREENGUARD and GREENGUARD Gold standards for low chemical emissions into indoor air during product usage

SAFE USE

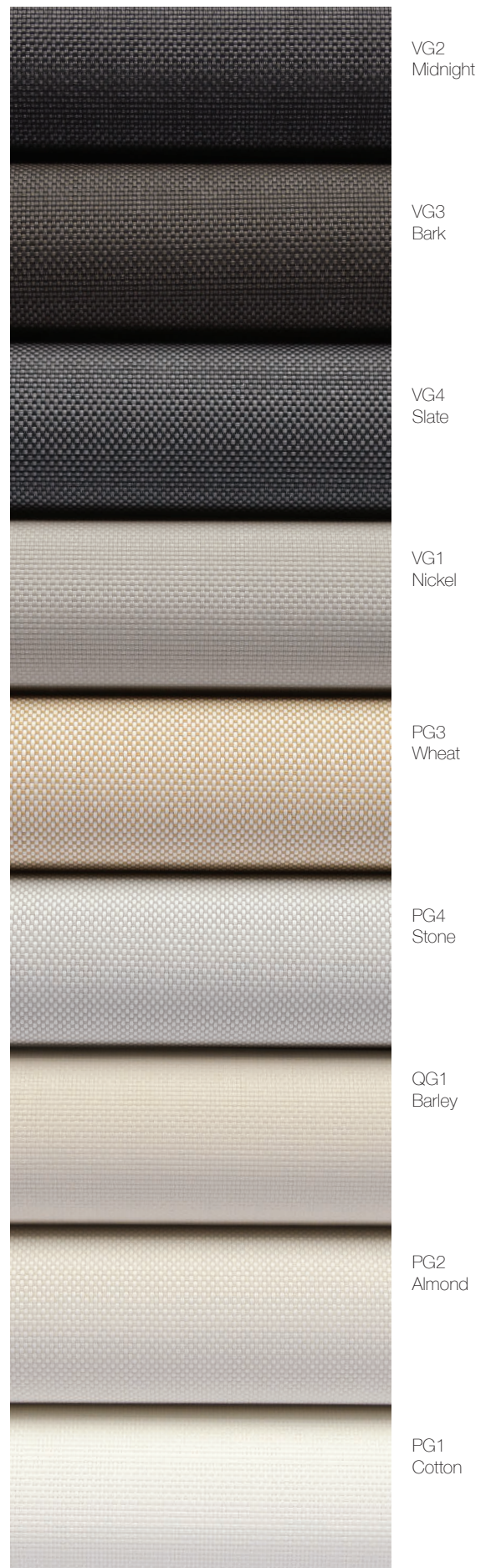
RoHS/Directive 2002/95/EC, US Consumer Product Safety Commission Section 101, ANSI/WCMA A 100.1-2007 for lead content and REACH (EC 1907/2006) compliant

STANDARD WIDTHS

63" and 98" (160 cm and 248.9 cm)

STANDARD ROLL LENGTH

30 Linear Yards (27.4 Linear Meters)







BASIC

AVERAGE OPENNESS

3% and 5%

With all the benefits, certifications, and technical specifications you have come to expect, SheerWeave BASIC is uniquely designed for the demanding and competitive commercial market and is an ideal choice for your spec-driven projects. A more robust fiberglass core yarn gives SheerWeave BASIC the added durability high traffic areas and public spaces require. Suitable for all types of interior window shade applications, SheerWeave BASIC is an economical alternative to traditional solar screen fabrics. BASIC 3% has exceptional sound absorbing performance for an added acoustical benefit. SheerWeave BASIC fabrics can also be used in exterior shading systems.

FIRE CLASSIFICATION

California U.S. Title 19 (small scale), NFPA 701 TM#1 (small scale), NFPA 101 (Class A Rating), IBC Section 803.1.1 (Class A Rating), BS 5867 Part 2 Type B Performance, NFPA 701 TM#2 (large scale), CAN/ULC-S 109 (large and small scale), CAN/CGSB2-4.162-M80

Fire classifications are subject to change. Please go to phifer.com for the most current information.

BACTERIA AND FUNGAL RESISTANCE

ASTM E 2180, ASTM G21, ASTM G22, AATCC30 Part 3, ASTM D 3273, GREENGUARD Mold and Bacteria Standard ASTM 6329; includes Microban antimicrobial additives

ENVIRONMENTAL CERTIFICATION

Certified to GREENGUARD and GREENGUARD Gold standards for low chemical emissions into indoor air during product usage

SAFE USE

RoHS/Directive 2002/95/EC, US Consumer Product Safety Commission Section 101, ANSI/WCMA A 100.1-2007 for lead content and REACH (EC 1907/2006) compliant

ACOUSTICAL PERFORMANCE & VALUE

NRC (Noise Reduction Coefficient) and SAA (Sound Absorption Average) tested in accordance with ASTM C423-09a.

BASIC 3%: NRC .60 / SAA .60

STANDARD WIDTH

98" (248.9 cm)

STANDARD ROLL LENGTH

30 Linear Yards (27.4 Linear Meters)



V21
Charcoal

V24
Charcoal /
Chestnut

V22
Charcoal / Gray

P05
White / Platinum

P04
White / Bone

P02
White





STYLE 1000

AVERAGE OPENNESS

25%

This vinyl coated fiberglass ribbed-weave fabric offers substantial shading and excellent outward visibility with improved daytime privacy. Style 1000 can also be used in exterior shading systems.

FIRE CLASSIFICATION

California U.S. Title 19 (small scale), NFPA 101 (Class A Rating), BS 5867 Part 2 Type B Performance, NFPA 701 TM#1 (small scale), IBC Section 803.1.1 (Class A Rating), NFPA 701 TM#2 (large scale), CAN/ULC-S 109 (large scale)

Fire classifications are subject to change. Please go to phifer.com for the most current information.

BACTERIA AND FUNGAL RESISTANCE

ASTM E 2180, ASTM G21, ASTM G22, AATCC30 Part 3, ASTM D 3273, GREENGUARD Mold and Bacteria Standard ASTM 6329; includes Microban antimicrobial additives

ENVIRONMENTAL CERTIFICATION

Certified to GREENGUARD and GREENGUARD Gold standards for low chemical emissions into indoor air during product usage

SAFE USE

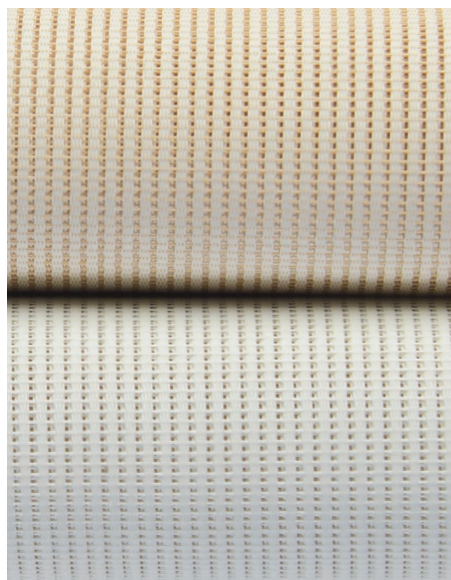
RoHS/Directive 2002/95/EC, US Consumer Product Safety Commission Section 101, ANSI/WCMA A 100.1-2007 for lead content and REACH (EC 1907/2006) compliant

STANDARD WIDTHS

36", 48", 72", 84" and 96" (91.4 cm, 121.9 cm, 182.9 cm, 213.4 cm and 243.8 cm)

STANDARD ROLL LENGTH

30 Linear Yards (27.4 Linear Meters)



P03
Antique White

P02
White





STYLE 2000/2100

AVERAGE OPENNESS

5% (2000), 10% (2100)

The original SheerWeave fabrics, Styles 2000 and 2100 are vinyl coated fiberglass basketweaves designed expressly for those applications that require a more opaque and non-directional fabric. Styles 2000 and 2100 can also be used in exterior shading systems.

FIRE CLASSIFICATION

California U.S. Title 19 (small scale), NFPA 101 (Class A Rating), BS 5867 Part 2 Type B Performance, CAN/ULC-S 109 (large and small scale), NFPA 701 TM#1 (small scale), IBC Section 803.1.1 (Class A Rating), NFPA 701 TM#2 (large scale), CAN/CGSB2-4.162-M80

Fire classifications are subject to change. Please go to phiifer.com for the most current information.

BACTERIA AND FUNGAL RESISTANCE

ASTM E 2180, ASTM G21, ASTM G22, AATCC30 Part 3, ASTM D 3273, GREENGUARD Mold and Bacteria Standard ASTM 6329; includes Microban antimicrobial additives

ENVIRONMENTAL CERTIFICATION

Certified to GREENGUARD and GREENGUARD Gold standards for low chemical emissions into indoor air during product usage

SAFE USE

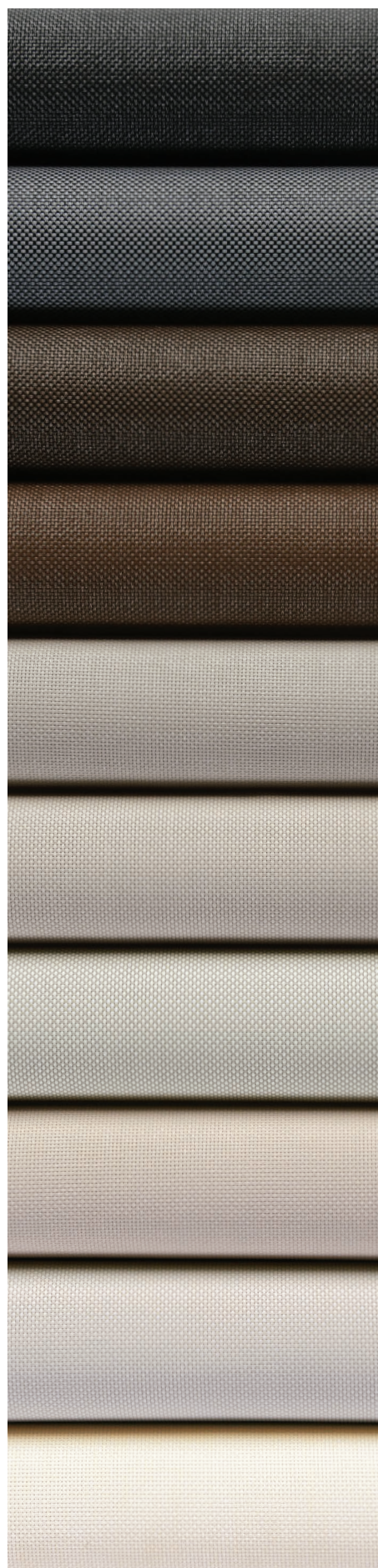
RoHS/Directive 2002/95/EC, US Consumer Product Safety Commission Section 101, ANSI/WCMA A 100.1-2007 for lead content and REACH (EC 1907/2006) compliant

STANDARD WIDTHS

63", 98" and 126" (160 cm, 248.9 cm and 320 cm)

STANDARD ROLL LENGTH

30 Linear Yards (27.4 Linear Meters)



V21
Charcoal

V22
Charcoal / Gray

V24
Charcoal /
Chestnut

Q10
Bronze

V04
Platinum

Q06
Bone / Platinum

P05
White / Platinum

Q05
Bone

P04
White / Bone

P02
White





STYLE 2500/2410/2390/2360

AVERAGE OPENNESS

1% (2500), 3% (2410), 5% (2390), 10% (2360)

Manufactured with ease of fabrication in mind, Styles 2500, 2410, 2390 and 2360 are thin and light weight vinyl coated fiberglass fabrics woven in a full basketweave construction with four openness factors to meet the broadest range of performance in a non-directional fabric. Styles 2500, 2410, 2390 and 2360 can also be used in exterior shading systems.

FIRE CLASSIFICATION

California U.S. Title 19 (small scale), NFPA 101 (Class A Rating), BS 5867 Part 2 Type B Performance, CAN/ULC-S 109 (large and small scale), NFPA 701 TM#1 (small scale), IBC Section 803.1.1 (Class A Rating), NFPA 701 TM#2 (large scale), CAN/CGSB2-4.162-M80

Fire classifications are subject to change. Please go to phifer.com for the most current information.

BACTERIA AND FUNGAL RESISTANCE

ASTM E 2180, ASTM G21, ASTM G22, AATCC30 Part 3, ASTM D 3273, GREENGUARD Mold and Bacteria Standard ASTM 6329; includes Microban antimicrobial additives

ENVIRONMENTAL CERTIFICATION

Certified to GREENGUARD and GREENGUARD Gold standards for low chemical emissions into indoor air during product usage

SAFE USE

RoHS/Directive 2002/95/EC, US Consumer Product Safety Commission Section 101, ANSI/WCMA A 100.1-2007 for lead content and REACH (EC 1907/2006) compliant

ACOUSTICAL PERFORMANCE & VALUE

NRC (Noise Reduction Coefficient) and SAA (Sound Absorption Average) tested in accordance with ASTM C423-09a.

STYLE 2500: NRC .55 / SAA .54

STANDARD WIDTHS

63", 98" and 126" (160 cm, 248.9 cm and 320 cm)

STANDARD ROLL LENGTH

30 Linear Yards (27.4 Linear Meters)



V21
Charcoal

V24
Charcoal /
Chestnut

V22
Charcoal / Gray

V32
Charcoal / Alpaca

V20
Pearl Gray

Q21
Beige / Pearl Gray

Q20
Beige

P14
Oyster /
Pearl Gray

P13
Oyster / Beige

P12
Oyster

P84
Brite White





PERFORMANCE+ STYLE 2500+/2410+/2390+

AVERAGE OPENNESS

1% (2500+), 3% (2410+), 5% (2390+)

SheerWeave Performance+ takes the performance of traditional SheerWeave Styles 2500, 2410 and 2390 fabrics “plus” the highly reflective properties of metallization and combines them to achieve the ultimate in sun control protection. By applying a thin metallized coating to the outward side of Performance+ fabrics, dark colors can achieve significant solar heat reduction comparable to what only light colors can achieve in other fabrics. The Performance+ metallized surface also improves glare reduction and outward visibility in light colors.

FIRE CLASSIFICATION

California U.S. Title 19 (small scale), NFPA 101 (Class A Rating), BS 5867 Part 2 Type B Performance, CAN/ULC-S 109 (large and small scale), NFPA 701 TM#1 (small scale), IBC Section 803.1.1 (Class A Rating), NFPA 701 TM#2 (large scale), CAN/CGSB2-4.162-M80

Fire classifications are subject to change. Please go to phifer.com for the most current information.

BACTERIA AND FUNGAL RESISTANCE

ASTM E 2180, ASTM G21, ASTM G22, AATCC30 Part 3, ASTM D 3273, GREENGUARD Mold and Bacteria Standard ASTM 6329; includes Microban antimicrobial additives

ENVIRONMENTAL CERTIFICATION

Certified to GREENGUARD and GREENGUARD Gold standards for low chemical emissions into indoor air during product usage

SAFE USE

RoHS/Directive 2002/95/EC, US Consumer Product Safety Commission Section 101, ANSI/WCMA A 100.1-2007 for lead content and REACH (EC 1907/2006) compliant

ACOUSTICAL PERFORMANCE & VALUE

NRC (Noise Reduction Coefficient) and SAA (Sound Absorption Average) tested in accordance with ASTM C423-09a.

STYLE 2500+: NRC .50 / SAA .49

STANDARD WIDTHS

63" and 96" (160 cm and 243.8 cm)

STANDARD ROLL LENGTH

30 Linear Yards (27.4 Linear Meters)



V21
Charcoal

V24
Charcoal /
Chestnut

V22
Charcoal / Gray

V32
Charcoal / Alpaca

V20
Pearl Gray

Q21
Beige / Pearl Gray

Q20
Beige

P14
Oyster /
Pearl Gray

P13
Oyster / Beige

P12
Oyster

Metallized backing on
reverse side of fabric





STYLE 2701/2703/2705/2710

AVERAGE OPENNESS

1% (2701), 3% (2703), 5% (2705), 10% (2710)

Styles 2701, 2703, 2705 and 2710 are vinyl coated fiberglass yarns woven into a traditional twill pattern for a two-sided fabric that provides the heat reduction benefit of light colors and the outward views and glare reduction of dark colors. Styles 2701, 2703, 2705 and 2710 can also be used in exterior shading systems.

FIRE CLASSIFICATION

California U.S. Title 19 (small scale), NFPA 701 TM#1 (small scale), NFPA 101 (Class A Rating), BS 5867 Part 2 Type B Performance, NFPA 701 TM#2 (large scale), CAN/ULC-S 109 (large and small scale), CAN/CGSB2-4.162-M80, IBC Section 803.1.1 (Class A Rating)

Fire classifications are subject to change. Please go to phifer.com for the most current information.

BACTERIA AND FUNGAL RESISTANCE

ASTM E 2180, ASTM G21, ASTM G22, AATCC30 Part 3, ASTM D 3273, GREENGUARD Mold and Bacteria Standard ASTM 6329; includes Microban antimicrobial additives

ENVIRONMENTAL CERTIFICATION

Certified to GREENGUARD and GREENGUARD Gold standards for low chemical emissions into indoor air during product usage

SAFE USE

RoHS/Directive 2002/95/EC, US Consumer Product Safety Commission Section 101, ANSI/WCMA A 100.1-2007 for lead content and REACH (EC 1907/2006) compliant

STANDARD WIDTHS

STYLES 2701, 2703 & 2705:
63", 98" and 126" (160 cm, 248.9 cm and 320 cm)

STYLE 2710:
63" and 98" (160 cm and 248.9 cm)

STANDARD ROLL LENGTH

30 Linear Yards (27.4 Linear Meters)

BACK

FACE



V21
Charcoal

P28
Oyster /
Charcoal

V22
Charcoal / Gray

P91
Oyster / Pewter

P92
Oyster /
Chestnut

V66
Charcoal /
Brown

V65
Charcoal /
Taupe

V64
Charcoal / Slate

P14
Oyster /
Pearl Gray

P13
Oyster / Beige

P12
Oyster





STYLE 3000

AVERAGE OPENNESS

14%

Combining vinyl coated fiberglass and polyester yarns, Style 3000 is woven into a unique rib weave for a distinct look and color palette. The 14% openness of Style 3000 lets in more natural light while providing excellent outward visibility. Style 3000 can also be used in exterior shading systems.

FIRE CLASSIFICATION

NFPA 701 TM#1 (small scale), IBC Section 803.1.1 (Class A Rating), NFPA 101 (Class A Rating), NFPA 701 TM#2 (large scale)

Fire classifications are subject to change. Please go to phifer.com for the most current information.

BACTERIA AND FUNGAL RESISTANCE

ASTM E 2180, ASTM G21, ASTM G22, AATCC30 Part 3, ASTM D 3273, GREENGUARD Mold and Bacteria Standard ASTM 6329; includes Microban antimicrobial additives

ENVIRONMENTAL CERTIFICATION

Certified to GREENGUARD and GREENGUARD Gold standards for low chemical emissions into indoor air during product usage

SAFE USE

RoHS/Directive 2002/95/EC, US Consumer Product Safety Commission Section 101, ANSI/WCMA A 100.1-2007 for lead content and REACH (EC 1907/2006) compliant

STANDARD WIDTHS

72" and 96" (182.9 cm and 243.8 cm)

STANDARD ROLL LENGTH

30 Linear Yards (27.4 Linear Meters)



Q04
Chocolate

Q18
Espresso

V02
Ninja Grey

Q19
Honey Sage

V01
Pale Grey

Q17
Sand Dollar

Q02
Custard Cream

Q01
Mushroom Sand

P01
Pearl White





STYLE 4400/4000/4100 WITH DOW ECOLIBRIUM™

AVERAGE OPENNESS

3% (4400), 5% (4000), 10% (4100)

As the only sun control fabrics in the market to use DOW's unique ECOLIBRIUM bio-based plasticizer, Styles 4400, 4000 and 4100 combine the durability of vinyl coated polyester with the latest in green PVC technology. ECOLIBRIUM is a renewable alternative to traditional plasticizers that lowers greenhouse gas emissions as much as 40% vs existing PVC compounds. Style 4400/4000/4100 with DOW ECOLIBRIUM is phthalate-free, lead-free and RoHS compliant. These fabrics maintain all of the established benefits of traditional vinyl such as durability, cleanability and fabric longevity. Styles 4400, 4000 and 4100 can also be used in exterior shading systems.

FIRE CLASSIFICATION

California U.S. Title 19 (small scale), NFPA 101 (Class A Rating), BS 5867 Part 2 Type B Performance, NFPA 701 TM#2 (large scale), NFPA 701 TM#1 (small scale), IBC Section 803.1.1 (Class A Rating), CAN/ULC-S 109 (large and small scale), CAN/CGSB2-4.162-M80

Fire classifications are subject to change. Please go to phifer.com for the most current information.

BACTERIA AND FUNGAL RESISTANCE

ASTM E 2180, ASTM G21, ASTM G22, AATCC30 Part 3, ASTM D 3273, GREENGUARD Mod and Bacteria Standard ASTM 6329; includes Microban antimicrobial additives

ENVIRONMENTAL CERTIFICATION

Certified to GREENGUARD and GREENGUARD Gold standards for low chemical emissions into indoor air during product usage

SAFE USE

RoHS/Directive 2002/95/EC, US Consumer Product Safety Commission Section 101 and ANSI/WCMA A 100.1-2007 for lead content

STANDARD WIDTHS

STYLES 4000 & 4400:
63", 84", 98" and 126" (160 cm, 213.4 cm, 248.9 cm and 320 cm)

STYLE 4100:
63", 84" and 98" (160 cm, 213.4 cm and 248.9 cm)

STANDARD ROLL LENGTH

30 Linear Yards (27.4 Linear Meters)



U66
Eco / Tobacco

U65
Eco / Ebony

U64
Eco / Ash

U63
Eco / Pewter

U61
Eco / Greystone

U62
Eco / Granite

U60
Eco / Pebblestone

U59
Eco / Alabaster

U58
Eco / Chalk





STYLE 4600/4500

AVERAGE OPENNESS

3% (4600), 5% (4500)

Using advances in polyester yarn development, Styles 4600 and 4500 are thinner, lighter weight, vinyl coated polyester fabrics offered in 10 decorator colors. Woven in a 2x2 basketweave, these fabrics are ideal for applications where a more opaque and non-directional fabric is needed. Styles 4600 and 4500 can also be used in exterior shading systems.

FIRE CLASSIFICATION

California U.S. Title 19 (small scale), NFPA 101 (Class A Rating), BS 5867 Part 2 Type B Performance, CAN/ULC-S 109 (large and small scale), NFPA 701 TM#1 (small scale), IBC Section 803.1.1 (Class A Rating), NFPA 701 TM#2 (large scale)

Fire classifications are subject to change. Please go to phifer.com for the most current information.

BACTERIA AND FUNGAL RESISTANCE

ASTM E 2180, ASTM G21, ASTM G22, AATCC30 Part 3, ASTM D 3273, GREENGUARD Mold and Bacteria Standard ASTM 6329; includes Microban antimicrobial additives

ENVIRONMENTAL CERTIFICATION

Certified to GREENGUARD and GREENGUARD Gold standards for low chemical emissions into indoor air during product usage

SAFE USE

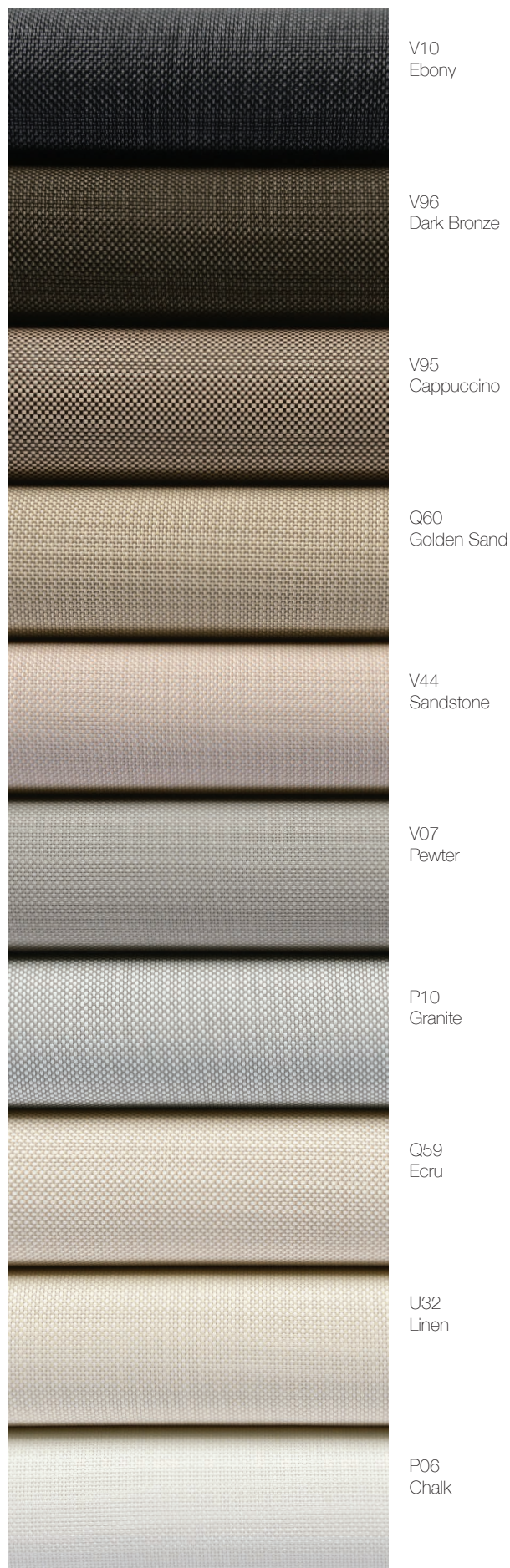
RoHS/Directive 2002/95/EC, US Consumer Product Safety Commission Section 101, ANSI/WCMA A 100.1-2007 for lead content and REACH (EC 1907/2006) compliant

STANDARD WIDTHS

63", 98" and 126" (160 cm, 248.9 cm and 320 cm)

STANDARD ROLL LENGTH

30 Linear Yards (27.4 Linear Meters)







STYLE 4650/4550

AVERAGE OPENNESS

3% (4650), 5% (4550)

Woven from thin and lightweight vinyl coated polyester yarns into a unique twill weave, Styles 4650 and 4550 offer a distinct two-sided appearance that maximizes both outward visibility and solar heat reduction. Styles 4650 and 4550 can also be used in exterior shading systems.

FIRE CLASSIFICATION

California U.S. Title 19 (small scale), NFPA 101 (Class A Rating), BS 5867 Part 2 Type B Performance, CAN/ULC-S 109 (large and small scale), NFPA 701 TM#1 (small scale), IBC Section 803.1.1 (Class A Rating), NFPA 701 TM#2 (large scale)

Fire classifications are subject to change. Please go to phifer.com for the most current information.

BACTERIA AND FUNGAL RESISTANCE

ASTM E 2180, ASTM G21, ASTM G22, AATCC30 Part 3, ASTM D 3273, GREENGUARD Mold and Bacteria Standard ASTM 6329; includes Microban antimicrobial additives

ENVIRONMENTAL CERTIFICATION

Certified to GREENGUARD and GREENGUARD Gold standards for low chemical emissions into indoor air during product usage

SAFE USE

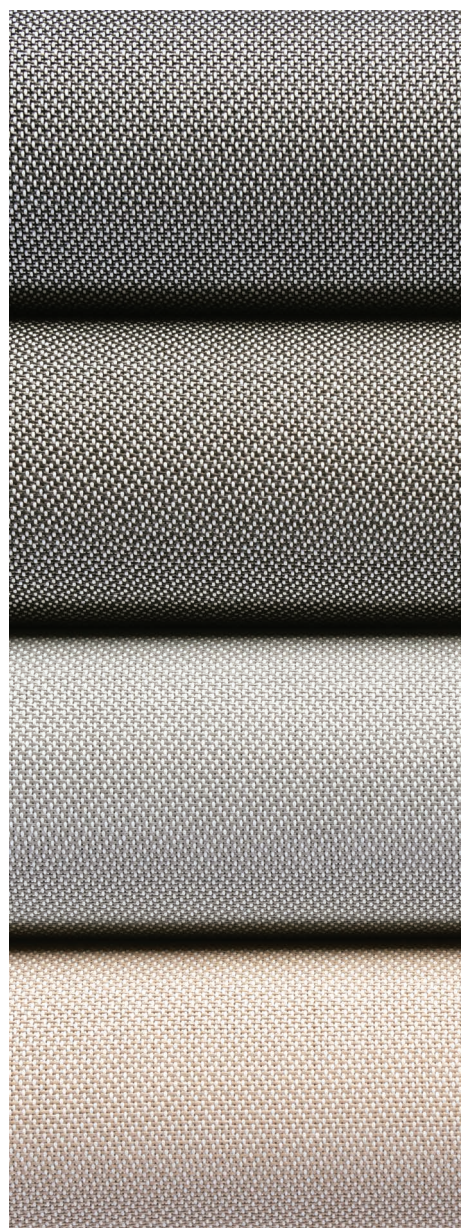
RoHS/Directive 2002/95/EC, US Consumer Product Safety Commission Section 101, ANSI/WCMA A 100.1-2007 for lead content and REACH (EC 1907/2006) compliant

STANDARD WIDTHS

63" and 98" (160 cm and 248.9 cm)

STANDARD ROLL LENGTH

30 Linear Yards (27.4 Linear Meters)

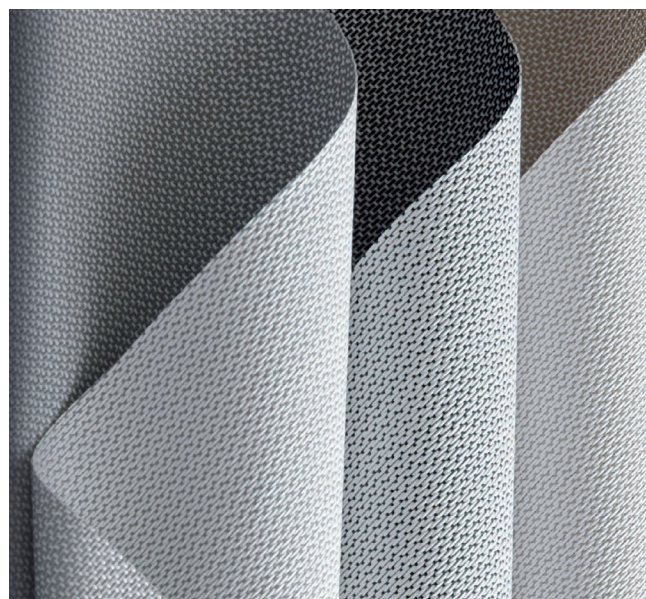


V45
Coal

V47
Chestnut

P10
Granite

P65
Linen



Distinct two-sided appearance





STYLE 4800

AVERAGE OPENNESS

1%

Designed with privacy in mind, Style 4800 is woven in a dense plain weave to limit directional visibility while allowing natural light to enter the room. Woven from vinyl coated polyester yarns, Style 4800 is durable, easy to maintain and high performing with a robust construction that makes it ideal for heavy traffic areas and public spaces. Style 4800 can also be used in exterior shading systems.

FIRE CLASSIFICATION

California U.S. Title 19 (small scale), NFPA 101 (Class A Rating), BS 5867 Part 2 Type B Performance, CAN/ULC-S 109 (large and small scale), NFPA 701 TM#1 (small scale), IBC Section 803.1.1 (Class A Rating), NFPA 701 TM#2 (large scale), CAN/CGSB2-4.162-M80

Fire classifications are subject to change. Please go to phifer.com for the most current information.

BACTERIA AND FUNGAL RESISTANCE

ASTM E 2180, ASTM G21, ASTM G22, AATCC30 Part 3, ASTM D 3273, GREENGUARD Mold and Bacteria Standard ASTM 6329; includes Microban antimicrobial additives

ENVIRONMENTAL CERTIFICATION

Certified to GREENGUARD and GREENGUARD Gold standards for low chemical emissions into indoor air during product usage

SAFE USE

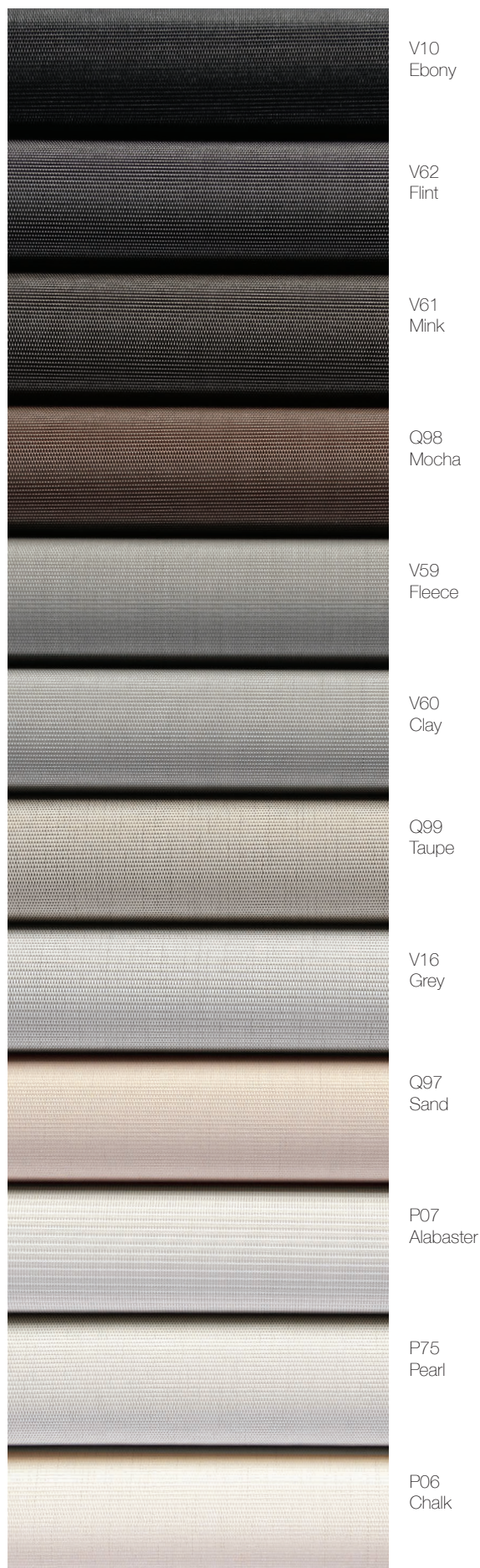
RoHS/Directive 2002/95/EC, US Consumer Product Safety Commission Section 101, ANSI/WCMA A 100.1-2007 for lead content and REACH (EC 1907/2006) compliant

STANDARD WIDTHS

63", 98" and 126" (160 cm, 248.9 cm and 320 cm)

STANDARD ROLL LENGTH

30 Linear Yards (27.4 Linear Meters)



V10
Ebony

V62
Flint

V61
Mink

Q98
Mocha

V59
Fleece

V60
Clay

Q99
Taupe

V16
Grey

Q97
Sand

P07
Alabaster

P75
Pearl

P06
Chalk





STYLE 4901/4903

AVERAGE OPENNESS

1% (4901), 3% (4903)

Form follows function in this unique combination of color and weave. Using thin and light weight vinyl coated polyester yarns, Styles 4901 and 4903 are as versatile as they are beautiful. Styles 4901 and 4903 can also be used in exterior shading systems.

FIRE CLASSIFICATION

California U.S. Title 19 (small scale), NFPA 101 (Class A Rating), BS 5867 Part 2 Type B Performance, CAN/ULC-S 109 (large and small scale), NFPA 701 TM#1 (small scale), IBC Section 803.1.1 (Class A Rating), CAN/CGSB2-4.162-M80, NFPA 701 TM#2 (large scale)

Fire classifications are subject to change. Please go to phifer.com for the most current information.

BACTERIA AND FUNGAL RESISTANCE

ASTM E 2180, ASTM G21, ASTM G22, AATCC30 Part 3, ASTM D 3273, GREENGUARD Mold and Bacteria Standard ASTM 6329; includes Microban antimicrobial additives

ENVIRONMENTAL CERTIFICATION

Certified to GREENGUARD and GREENGUARD Gold standards for low chemical emissions into indoor air during product usage

SAFE USE

RoHS/Directive 2002/95/EC, US Consumer Product Safety Commission Section 101, ANSI/WCMA A 100.1-2007 for lead content and REACH (EC 1907/2006) compliant

ACOUSTICAL PERFORMANCE & VALUE

NRC (Noise Reduction Coefficient) and SAA (Sound Absorption Average) tested in accordance with ASTM C423-09a.

STYLE 4901: NRC .60 / SAA .59

STANDARD WIDTHS

63" and 98" (160 cm and 248.9 cm)

STANDARD ROLL LENGTH

30 Linear Yards (27.4 Linear Meters)

BACK

FACE







STYLE 5000

AVERAGE OPENNESS

RANGE 1% - 10%

SheerWeave Style 5000 features fabrics that combine textured yarns with traditional patterns. With a color palette of hushed naturals and rich earth tones, this collection offers a range of classic options designed to suit any style of decor or personal preference. Style 5000 can also be used in exterior roller shades.

FIRE CLASSIFICATION

See swatch card or website (www.phifer.com/suncontrol/interior) for individual pattern results.

Fire classifications are subject to change. Please go to phifer.com for the most current information.

BACTERIA AND FUNGAL RESISTANCE

ASTM E 2180, ASTM G21 and ASTM G22; includes Microban antimicrobial additives

ENVIRONMENTAL CERTIFICATION

Certified to GREENGUARD and GREENGUARD Gold standards for low chemical emissions into indoor air during product usage

SAFE USE

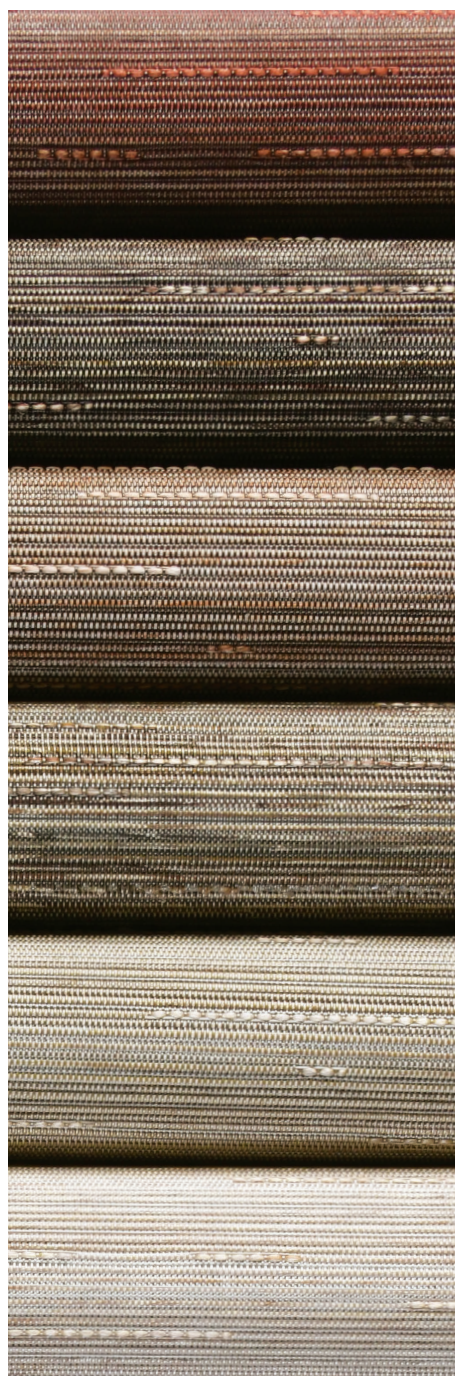
RoHS/Directive 2002/95/EC, US Consumer Product Safety Commission Section 101, ANSI/WCMA A 100.1-2007 for lead content and REACH (EC 1907/2006) compliant

STANDARD WIDTHS

74" and 98" (187.96 cm and 248.9 cm)

STANDARD ROLL LENGTH

30 Linear Yards (27.4 Linear Meters)



R11
Linen /
Cranberry

V88
Linen / Fig

R12
Linen /
Cinnamon

U10
Linen / Topaz

U11
Linen / Burlap

U12
Linen / Cream

Continued on next page.





Q66
Metro / Platinum

U24
Seaglass / Silver

U28
Seaglass /
Chardonnay

U29
Seaglass / Crystal

R95
Bark / Sienna

Q50
Bark / Tiger Oak

Q61
Bark / Ash

Q62
Bark / Pewter



Q95
Tweed / Buckeye

Q94
Tweed / Oatmeal

R92
Chenille /
Driftwood

R91
Chenille / Honey

R90
Chenille / Pearl

R89
Chenille /
Marshmallow

Q63
Linen / Pearl

Q64
Linen / Taupe

Q65
Linen / Clay





P60
Bamboo / Birch

Q46
Bamboo / Wheat

R87
Jute / Latte

R88
Jute / Coffee

R86
Jute / Flax

R85
Jute / Parchment

Q43
Marble / Sand



R05
Feather / Clear

R04
Feather / Alabaster

R06
Feather / Grey

Q03
Feather / Beige

V17
Jute / Fog

V18
Jute / Smoke





STYLE 7000 BLACKOUT FABRIC

AVERAGE OPENNESS

OPAQUE

Style 7000 is uniquely designed to provide total light blockage when complete room darkening is needed. With a broad range of decorator colors, the look and feel of rich cloth and a PVC-free composition, Style 7000 will enhance the beauty and function of both commercial and residential spaces. All Style 7000 colors have an off-white backing.

FIRE CLASSIFICATION

California U.S. Title 19 (small scale), BS 5867 Part 2 Type B Performance, IBC Section 803.1.1 (Class A Rating), NFPA 101 (Class A Rating), NFPA 701 TM#1 (small scale), CAN/ULC-S 109 (large and small scale), CAN/CGSB2-4.162-M80

Fire classifications are subject to change. Please go to phifer.com for the most current information.

BACTERIA AND FUNGAL RESISTANCE

ASTM G21 and ASTM E 2180

ENVIRONMENTAL CERTIFICATION

Certified to GREENGUARD and GREENGUARD Gold standards for low chemical emissions into indoor air during product usage

SAFE USE

RoHS/Directive 2002/95/EC, US Consumer Product Safety Commission Section 101 and ANSI/WCMA A 100.1-2007 for lead content

STANDARD WIDTHS

94" and 118" (238.8 cm and 300 cm)

STANDARD ROLL LENGTH

30 Linear Yards (27.4 Linear Meters)

Colors may vary slightly from swatch samples. All variations are within industry standards.



V40
Oynx

U69
Cocoa

V39
Graphite

Q58
Mushroom

V70 **NEW**
Porpoise

V41
Canyon

U67
Canvas

Q57
Wheat

P64
Sand

Q00 **NEW**
Merino

P63
Birch

P62
White





STYLE 7100 BLACKOUT FABRIC

AVERAGE OPENNESS OPAQUE

Style 7100 is a durable laminated blackout fabric that combines the woven texture of our Style 2000 as the face fabric with a sturdy vinyl backing to achieve total light blockage. Style 7100 coordinates easily with other SheerWeave fabrics when multi-purpose shades are needed. All Style 7100 colors have a white backing.

FIRE CLASSIFICATION

NFPA 101 (Class B Rating), BS 5867 Part 2 Type B Performance, NFPA 701 TM#1 (small scale), IBC Section 803.1.1 (Class B Rating), CAN/ULC S-109 (large and small scale)

Fire classifications are subject to change. Please go to phiifer.com for the most current information.

BACTERIA AND FUNGAL RESISTANCE

ASTM G21, ASTM G22, ASTM E 2180, ASTM D 3273, GREENGUARD Mold and Bacteria Standard ASTM 6329; Style 2000 face includes Microban antimicrobial additives.

ENVIRONMENTAL CERTIFICATION

Certified to GREENGUARD and GREENGUARD Gold standards for low chemical emissions into indoor air during product usage

SAFE USE

RoHS/Directive 2002/95/EC, US Consumer Product Safety Commission Section 101, ANSI/WCMA A 100.1-2007 for lead content and REACH (EC 1907/2006) compliant

STANDARD WIDTHS

63" and 96" (160 cm and 243.8 cm)

STANDARD ROLL LENGTH

30 Linear Yards (27.4 Linear Meters)

Colors may vary slightly from swatch samples. All variations are within industry standards.



V21
Charcoal

P05
White / Platinum

Q06
Bone / Platinum

Q05
Bone

P04
White / Bone

P02
White





STYLE 7200R/7250R (Residential)

7200R - BLACKOUT FABRIC

7250R - LIGHT-FILTERING FABRIC

7200R AVERAGE OPENNESS

OPAQUE

Whether contemporary or traditional, Style 7200R complements any design scheme, combining total light blockage with a neutral yet subtly variegated pattern. Style 7250R offers a light-filtering option, using the same face fabric and pattern of Style 7200R to allow natural light to brighten interior spaces. These fabrics are suitable for roller shades, Roman shades and panel track systems and are ideal for residential use.

FIRE CLASSIFICATION

California Technical Bulletin 117

STYLE 7200R: NFPA 101 (Class B Rating), IBC Section 803.1.1 (Class B Rating)

STYLE 7250R: NFPA 101 (Class A Rating), IBC Section 803.1.1 (Class A Rating)

Fire classifications are subject to change. Please go to phifer.com for the most current information.

BACTERIA AND FUNGAL RESISTANCE

ASTM G21 and ASTM E 2180

ENVIRONMENTAL CERTIFICATION

Certified to GREENGUARD and GREENGUARD Gold standards for low chemical emissions into indoor air during product usage

SAFE USE

RoHS/Directive 2002/95/EC, US Consumer Product Safety Commission Section 101, ANSI/WCMA A 100.1-2007 for lead content

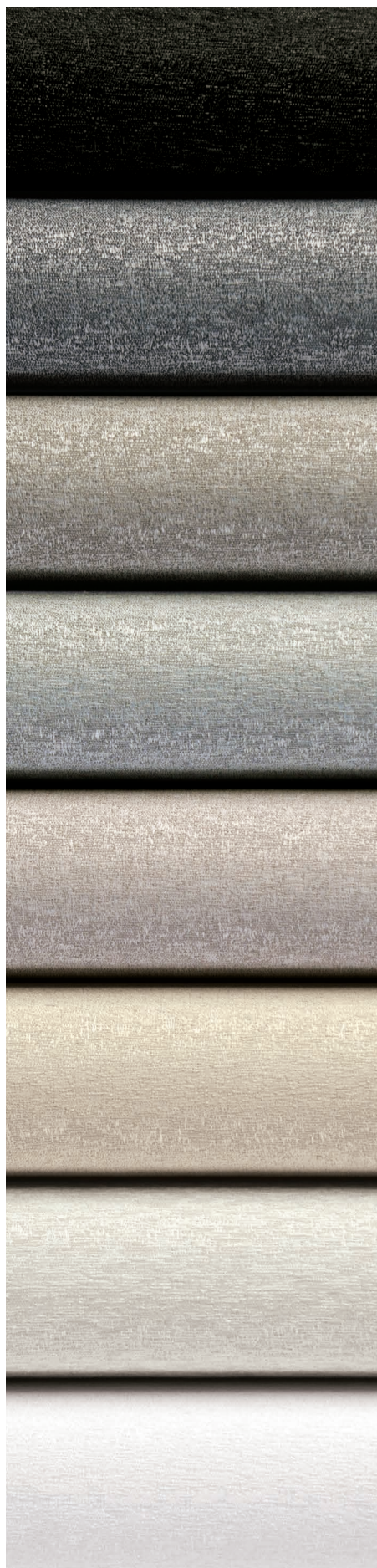
STANDARD WIDTHS

118" (300 cm)

STANDARD ROLL LENGTH

22 Linear Yards (20 Linear Meters)

Colors may vary slightly from swatch samples. All variations are within industry standards.



STYLE
7200R / 7250R

RB8 / RL8
Raven

RB7 / RL7
Blazer

RB6 / RL6
Earl Grey

RB5 / RL5
Chrome

RB4 / RL4
Chiffon

RB3 / RL3
Sail

RB2 / RL2
Oyster

RB1 / RL1
Swan





STYLE 7400/7450

7400 - BLACKOUT FABRIC

7450 - LIGHT-FILTERING FABRIC

7400 AVERAGE OPENNESS

OPAQUE

A picture of refined elegance, Style 7400 layers a subtle textured pattern over a soft, luxurious backing for total light blockage. Offering the face fabric of Style 7400, Style 7450 filters natural light while illuminating interior spaces. These fabrics are suitable for roller shades, Roman shades and panel track systems.

FIRE CLASSIFICATION

STYLE 7400: California U.S. Title 19 (small scale), CAN/CGSB 2-4.162-M80, CAN/ULC S-109 (large and small scale), NFPA 701 TM#1 (small scale), NFPA 701 TM#2 (large scale)

STYLE 7450: California Technical Bulletin 117, IBC Section 803.1.1 (Class A Rating), NFPA 101 (Class A Rating)

Fire classifications are subject to change. Please go to phifer.com for the most current information.

BACTERIA AND FUNGAL RESISTANCE

ASTM G21 and ASTM E 2180

ENVIRONMENTAL CERTIFICATION

Certified to GREENGUARD and GREENGUARD Gold standards for low chemical emissions into indoor air during product usage

SAFE USE

RoHS/Directive 2002/95/EC, ANSI/WCMA A 100.1-2007 for lead content, US Consumer Product Safety Commission Section 101

STANDARD WIDTHS

118" (300 cm)

STANDARD ROLL LENGTH

30 Linear Yards (27.4 Linear Meters)

Colors may vary slightly from swatch samples. All variations are within industry standards.



U87
Flint

U86
Spice

U85
Shale

U84
Seagrass

U82
Sesame

U81
Parchment

U83
Pebble

U80
Cotton





STYLE 7500/7500R BLACKOUT FABRIC

AVERAGE OPENNESS

OPAQUE

This attractive blackout fabric maintains high quality at an economical price. Style 7500 is presented in a classic range of neutral colors with a unique PVC-free composition. Ideal for commercial and residential applications, SheerWeave Style 7500 is an excellent option when total light blockage is needed. All 7500 colors have an off-white backing.

New Style 7500R, a companion to the Style 7500 range, maintains the same look and feel as its namesake at substantial cost savings and is designed specifically for residential use where commercial fire certifications are not required.

FIRE CLASSIFICATION

STYLE 7500: California U.S. Title 19 (small scale), NFPA 101 (Class A Rating), BS 5867 Part 2 Type B Performance, NFPA 701 TM#1 (small scale), IBC Section 803.1.1 (Class A Rating), CAN/ULC-S 109 (large and small scale), CAN/CGSB2-4.162-M80

STYLE 7500R: California Technical Bulletin 117, NFPA 101 (Class B Rating), IBC Section 803.1.1 (Class B Rating)

Fire classifications are subject to change. Please go to phifer.com for the most current information.

BACTERIA AND FUNGAL RESISTANCE

ASTM G21 and ASTM E 2180

ENVIRONMENTAL CERTIFICATION

Certified to GREENGUARD and GREENGUARD Gold standards for low chemical emissions into indoor air during product usage

SAFE USE

RoHS/Directive 2002/95/EC, US Consumer Product Safety Commission Section 101 and ANSI/WCMA A 100.1-2007 for lead content

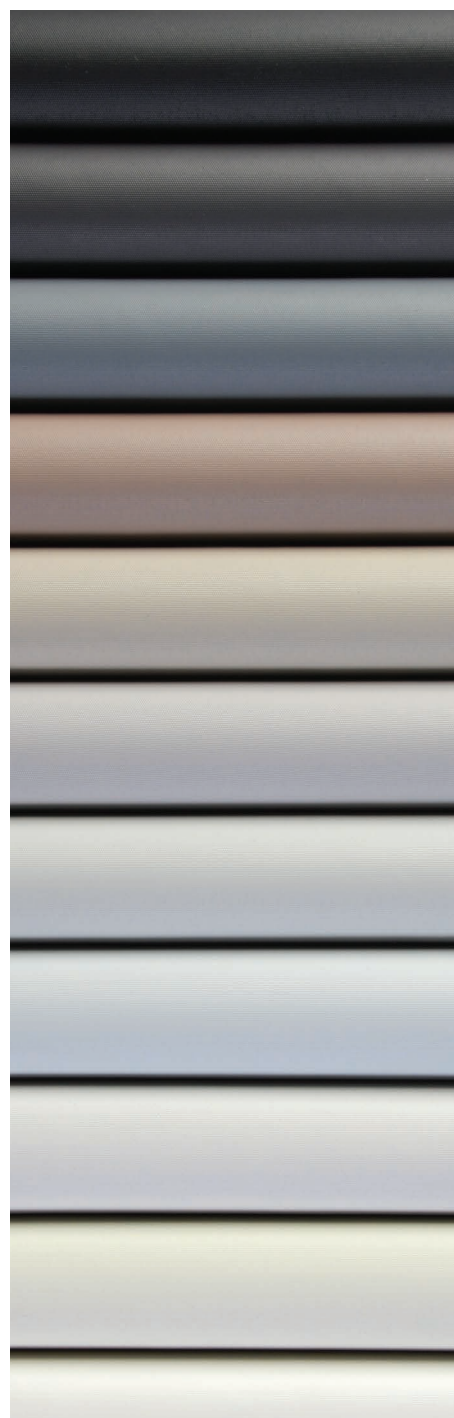
STANDARD WIDTHS

118" (300 cm)

STANDARD ROLL LENGTH

30 Linear Yards (27.4 Linear Meters)

Colors may vary slightly from swatch samples. All variations are within industry standards.



**STYLE
7500 / 7500R**

R22 / R55
Midnight

R21 / R54
Orient

R20 / R53
Odyssey

R19 / R52
Stone

R17 / R51
Dune

R43 / R50
Tundra

R42 / R49
Nimbus

R97 / R48
Mist

R41 / R47
Limestone

R40 / R46
Porcelain

R39 / R45
Cloud

R13 / R44
Ice

STYLE 7500

R99
Midnight x2

S97
Orient x2



R99 Midnight x2 and
S97 Orient x2 feature the
same color front and back





STYLE 7700R/7750R (Residential)

7700R - BLACKOUT FABRIC

7750R - LIGHT-FILTERING FABRIC

7700R AVERAGE OPENNESS

OPAQUE

Featuring a soft, textured pattern evoking the look of grasscloth, Style 7700R offers a PVC-free blackout option for total light blockage. Style 7750R filters natural light while maintaining the look of the face fabric of Style 7700R. A color-coordinated backing ensures the same neutral fabric color is shown toward both the interior of the room and glass. These fabrics are suitable for roller shades, Roman shades and panel track systems and are ideal for residential use.

FIRE CLASSIFICATION

California Technical Bulletin 117

STYLE 7750R: NFPA 101 (Class A Rating), IBC Section 803.1.1 (Class A Rating)

Fire classifications are subject to change. Please go to phifer.com for the most current information.

BACTERIA AND FUNGAL RESISTANCE

ASTM G21 and ASTM E 2180

ENVIRONMENTAL CERTIFICATION

Certified to GREENGUARD and GREENGUARD Gold standards for low chemical emissions into indoor air during product usage

SAFE USE

RoHS/Directive 2002/95/EC, US Consumer Product Safety Commission Section 101, ANSI/WCMA A 100.1-2007 for lead content

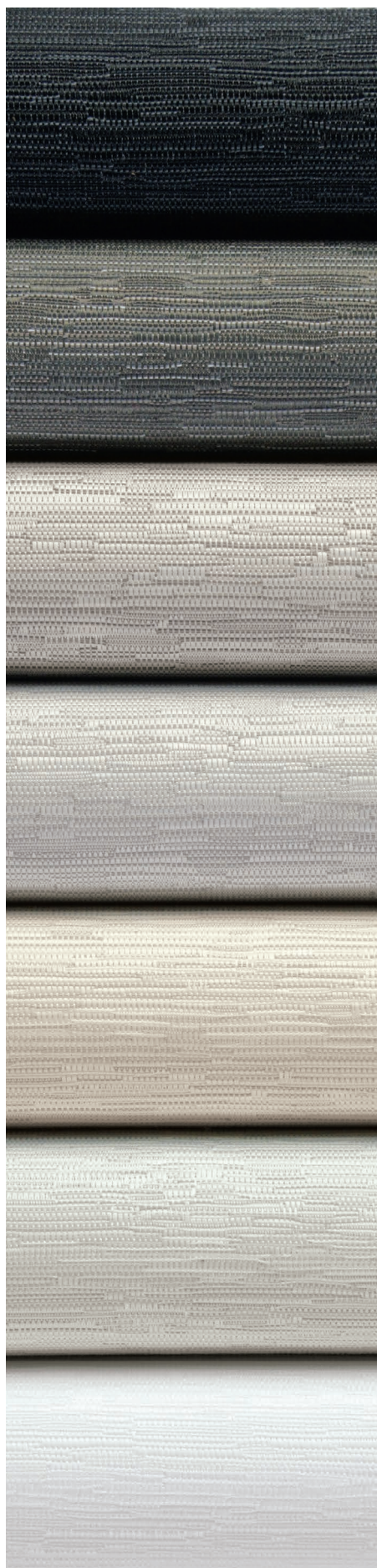
STANDARD WIDTHS

118" (300 cm)

STANDARD ROLL LENGTH

22 Linear Yards (20 Linear Meters)

Colors may vary slightly from swatch samples. All variations are within industry standards.



STYLE
7700R / 7750R

TB7 / TL7
Onyx

TB6 / TL6
Pewter

TB5 / TL5
Graphite

TB3 / TL3
Concrete

TB2 / TL2
Sand

TB4 / TL4
Chalk

TB1 / TL1
Crystal





STYLE 7800/7850 **NEW**
7800 - BLACKOUT FABRIC
7850 - LIGHT-FILTERING FABRIC

7800 AVERAGE OPENNESS
OPAQUE

Emulating the timeless look of linen, Style 7800 achieves total light blockage with an acrylic foamed backing and decorative polyester face. With no backing, Style 7850 provides the same texture in complimenting colors while allowing interiors to be illuminated with natural light. These fabrics are suitable for roller shades, Roman shades and panel track systems.

FIRE CLASSIFICATION

NFPA 701 TM#1 (small scale)

Fire classifications are subject to change. Please go to phifer.com for the most current information.

BACTERIA AND FUNGAL RESISTANCE

ASTM G21, ASTM G22 and ASTM E 2180

ENVIRONMENTAL CERTIFICATION

Certified to GREENGUARD and GREENGUARD Gold standards for low chemical emissions into indoor air during product usage

SAFE USE

RoHS/Directive 2002/95/EC, US Consumer Product Safety Commission Section 101, ANSI/WCMA A 100.1-2007 for lead content

STANDARD WIDTHS

118" (300 cm)

STANDARD ROLL LENGTH

22 Linear Yards (20 Linear Meters)

Colors may vary slightly from swatch samples. All variations are within industry standards.



STYLE
7800 / 7850

UB7 / UL7
 Fossil

UB6 / UL6
 Aspen

UB5 / UL5
 Fleece

UB4 / UL4
 Vine

UB3 / UL3
 Dove

UB2 / UL2
 Raffia

UB1 / UL1
 Almond

UB0 / UL0
 Blanco





STYLE 8000 PVC-FREE FABRIC

AVERAGE OPENNESS

3%

Cradle to Cradle Certified™ Bronze and constructed from 100% polyester yarn, Style 8000 is strong, light weight and 100% recyclable. The unique 2x2 basketweave provides excellent fabric stability and enhances outward views.

FIRE CLASSIFICATION

California U.S. Title 19 (small scale), NFPA 101 (Class A Rating), BS 5867 Part 2 Type B Performance, NFPA 701 TM#1 (small scale), IBC Section 803.1.1 (Class A Rating), CAN/ULC-S 109 (large and small scale), NFPA 701 TM#2 (large scale), CAN/CGSB2-4.162-M80

Fire classifications are subject to change. Please go to phifer.com for the most current information.

BACTERIA AND FUNGAL RESISTANCE

ASTM G21 and ASTM E 2180

ENVIRONMENTAL CERTIFICATION

Cradle to Cradle Certified™ Bronze, GREENGUARD and GREENGUARD Gold standards for low chemical emissions into indoor air during product usage

SAFE USE

RoHS/Directive 2002/95/EC, US Consumer Product Safety Commission Section 101, ANSI/WCMA A 100.1-2007 for lead content and REACH (EC 1907/2006) compliant

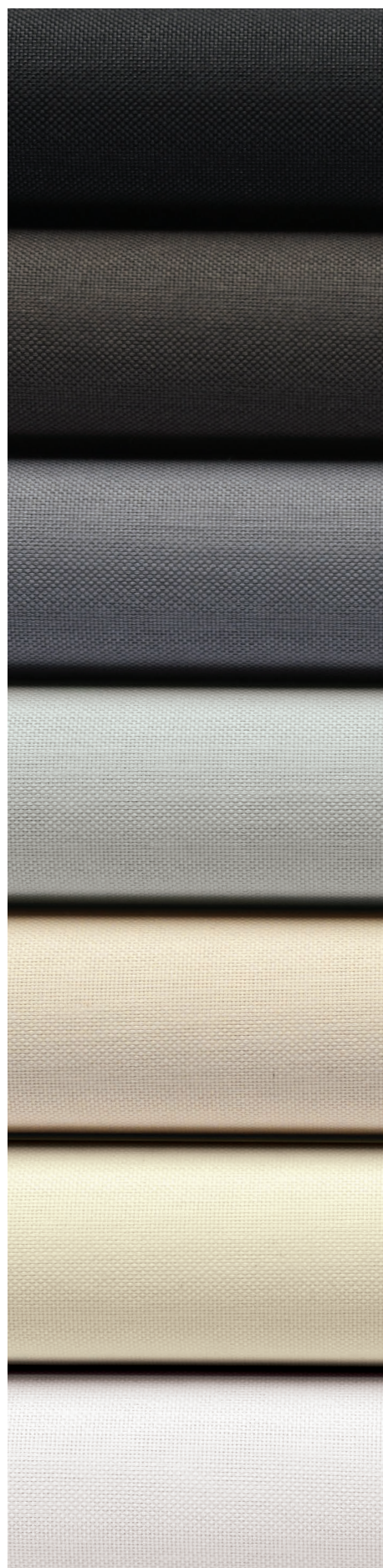
STANDARD WIDTHS

118" (300 cm)

STANDARD ROLL LENGTH

30 Linear Yards (27.4 Linear Meters)

Colors may vary slightly from swatch samples. All variations are within industry standards.



S07
Kohl

S06
Seal

S05
Smoke

S04
Silver

S03
Ecrú

S02
Eggshell

S01
Snow



Fabric Features



DOW ECOLIBRIUM™

DOW ECOLIBRIUM Bio-Based Plasticizers offer a renewable alternative to traditional petroleum-based plasticizers for a more sustainable option. This unique green technology is exclusive to Phifer for the window treatment industry and can only be found in SheerWeave Style 4400/4000/4100 fabrics. ECOLIBRIUM benefits include:

- Lowers greenhouse gas emissions as much as 40% vs. existing PVC compounds
- 98% of the plasticizer is derived from non-fossil fuel based feedstock
- Lower carbon footprint
- Phthalate-free
- RoHS compliant
- LEED credits for rapidly renewable content may be available
- Ability for compound to be recycled in a standard vinyl stream
- USDA certified bio-based product

SheerWeave fabrics manufactured with DOW ECOLIBRIUM maintain all of the established benefits of traditional vinyl such as durability, cleanability and fabric longevity.



GREENGUARD

GREENGUARD Certification ensures products have met some of the world's most rigorous and comprehensive standards for low emissions of volatile organic compounds (VOCs) into indoor air. Phifer was the first manufacturer in the window treatment industry to achieve GREENGUARD certification for interior shading fabrics. Certification is completely voluntary and ensures that the highest industry standards are being applied to maintain indoor air quality for the health and safety of building occupants.



MICROBAN®

Phifer SheerWeave fabrics are the only shade fabrics in the world to include Microban protection. Microban antimicrobial protection works continuously to inhibit the growth of bacteria, mold and mildew that can cause stains, odors and product deterioration.

- Microban antimicrobial protection is infused into Phifer SheerWeave sun control fabrics for lasting protection that won't wash off or wear away for the lifetime of the shade.
- SheerWeave fabrics infused with Microban antimicrobial technology are ideal for any commercial or residential environment where microbes are a concern, including healthcare, hospitality, home, office, schools and institutions.
- Most SheerWeave fabrics include Microban® antimicrobial product protection. Microban is the leading technology in antibacterial/antifungal protection.



UV Protection

Most SheerWeave fabrics have received the Seal of Approval by the Melanoma International Foundation (MIF) for effectiveness in preventing sun damage to the skin or eyes.



Cradle to Cradle

The Cradle to Cradle Products Innovation Institute is a non-profit organization that administers the Cradle to Cradle Certified product standard. This third party program guides designers and manufacturers through a continual improvement process that looks at a product through five quality categories – material health, material reutilization, renewable energy and carbon management, water stewardship and social fairness. The Cradle to Cradle mark provides consumers, regulators, employees and industry peers with a clear, visible and tangible validation of a manufacturer's ongoing commitment to sustainability and their communities.



anton
Ballet

EXIT

Fabric Features



Energy Savings

Solar heat gain can account for up to 50% of a building's energy costs according to the U.S. Department of Energy. By reflecting solar energy, Phifer's broad range of SheerWeave fabrics reduce solar heat gain, lower energy costs and improve comfort. Phifer shade fabrics allow for the use of natural day lighting to reduce the need for artificial lighting and provide additional energy savings.



Safe Use

The Safe Use designation provides assurance that our products are compliant with some of the most stringent standards for chemical content in the world, including RoHS, REACH, ANSI/WCMA A 100.1-2007 and US Consumer Product Safety Commission Section 101 for lead content.



Acoustical (Noise Reduction)

Driven by LEED environmental objectives, the trend of commercial design is to use more glass with exposed floors and ceilings. With these hard surfaces comes an acoustical challenge that architects and designers must address. Acoustical performance values are expressed by the NRC (Noise Reduction Coefficient) or the SAA (Sound Absorption Average). We have tested a broad range of SheerWeave fabrics for both values based on a free hanging vertical panel to best emulate a roller shade. BASIC 3%, Style 2500, Performance+ Style 2500+ and Style 4901 have overall NRC values of .50-.60 with even more impressive values within frequency ranges of human speech.

BASIC 3%	NRC .60 / SAA .60
Style 2500	NRC .55 / SAA .54
Performance+ Style 2500+	NRC .50 / SAA .49
Style 4901	NRC .60 / SAA .59



PVC-Free/Recyclable

When a more environmentally-sensitive and sustainable fabric option is preferred, Phifer offers several PVC-free fabrics in multiple openness factors and blackout collections. SheerWeave Infinity2 is manufactured from 100% post-industrial waste and is 100% recyclable. Phifer maintains an active reclamation program for Infinity2.



Printable

Printing unique colors, patterns, logos and graphics on SheerWeave opens a whole new opportunity for product applications. SheerWeave fabrics are ideal for digital and screen printing methods (as shown in photo at left). Your local printer can recommend the best print options based on their capabilities.



Trackless Technology®

All SheerWeave fiberglass yarn fabrics now feature Phifer's unique TrackLess Technology. This breakthrough technology minimizes the fiberglass yarn's inherent qualities to track when being rolled up in a shade. With TrackLess Technology, these same fabrics will track less, roll up straighter and reduce shade fabrication time.



| Fabric Features



Durability/Cleanability

Functional and durable, SheerWeave interior sun control fabrics offer light management while withstanding spills, splatters and the hustle and bustle of high traffic areas. These fabrics are easy to maintain – see below for product-specific cleaning instructions.

Styles 1000, 2000/2100, 2500/2410/2390/2360, 2701/2703/2705/2710, 3000, 4400/4000/4100, 4600/4500, 4650/4550, 4800, 4901/4903, 5000, 7100, Infinity2 and BASIC

Note: The following cleaning practices will not affect the products' ability to resist the growth of microorganisms.

- Clean with mild soap and water.
- If cleaners other than mild soap and water are desired, test in an inconspicuous area prior to use.
- Rinse thoroughly after cleaning.

Paint solvents will damage the vinyl surface of SheerWeave products and should not be used.

Styles 7000, 7200R/7250R, 7400/7450, 7500/7500R, 7700R/7750R, 7800/7850 and 8000

Fabric should be regularly dusted/vacuumed as appropriate. If commercial spot cleaners are used, they must first be tested and allowed to dry on an inconspicuous area to ensure compatibility.

Performance+ Style 2500+/2410+/2390+

The metallized coating is fragile and must be handled with the utmost care to avoid damage. Attention must be given during all phases of fabrication and installation to protect the metallized coating. Do not scrub. Do not use tape, solvents or abrasive cleaners which could damage the fabric coating. Clean with a soft, damp cloth.

If you need further assistance, please call 1-800-221-5497.



Features Chart



Sheerweave Style	Number of Colors	Average Openness	Dow Ecolibrium	Cradle to Cradle	Greenguard	Microban	MIF Approved	Trackless Technology	Printable	Noise Reduction	Recyclable	Pvc Free	Safe Use	Phthalate Free	Flame Retardant	Halogen Free - FR	Energy Savings	Interior Use	Exterior Use	Blackout	Wide Width	Made in USA
Infinity ₂ 1%	9	1%			X		X				X	X	X	X	X		X	X				X
Infinity ₂ 3%	9	3%			X		X				X	X	X	X	X		X	X				X
Infinity ₂ 5%	9	5%			X		X				X	X	X	X	X		X	X				X
BASIC 3%	6	3%			X	X	X	X	X	X			X		X	X	X	X	X			X
BASIC 5%	6	5%			X	X	X	X	X				X		X	X	X	X	X			X
1000	2	25%			X	X		X	X				X		X	X	X	X	X			X
2000	10	5%			X	X	X	X	X				X		X	X	X	X	X		X	X
2100	10	10%			X	X	X	X	X				X		X	X	X	X	X		X	X
2360	11	10%			X	X	X	X	X				X		X	X	X	X	X		X	X
2390	11	5%			X	X	X	X	X				X		X	X	X	X	X		X	X
2410	11	3%			X	X	X	X	X				X		X	X	X	X	X		X	X
2500	11	1%			X	X	X	X	X	X			X		X	X	X	X	X		X	X
PERF+ 2390	10	5%			X	X	X	X					X		X	X	X	X				X
PERF+ 2410	10	3%			X	X	X	X					X		X	X	X	X				X
PERF+ 2500	10	1%			X	X	X	X		X			X		X	X	X	X				X
2701	11	1%			X	X	X	X	X				X		X	X	X	X	X		X	X
2703	11	3%			X	X	X	X	X				X		X	X	X	X	X		X	X
2705	11	5%			X	X	X	X	X				X		X	X	X	X	X		X	X
2710	11	10%			X	X	X	X	X				X		X	X	X	X	X			X
3000	9	14%			X	X		X	X				X		X	X	X	X	X			X
4000	9	5%	X		X	X	X		X				X	X	X	X	X	X	X		X	X
4100	9	10%	X		X	X	X		X				X	X	X	X	X	X	X			X
4400	9	3%	X		X	X	X		X				X	X	X	X	X	X	X		X	X
4500	10	5%			X	X	X		X				X		X	X	X	X	X		X	X
4600	10	3%			X	X	X		X				X		X	X	X	X	X		X	X
4550	4	5%			X	X	X		X				X		X	X	X	X	X			X
4650	4	3%			X	X	X		X				X		X	X	X	X	X			X
4800	12	1%			X	X	X		X				X		X	X	X	X	X		X	X
4901	13	1%			X	X	X		X	X			X		X	X	X	X	X			X
4903	13	3%			X	X	X		X				X		X	X	X	X	X			X
5000	36	1-10%			X	X	X						X		X	X	X	X	X			X
7000	12	0%			X		X		X			X	X	X	X		X	X		X	X	
7100	6	0%			X	X	X	X	X				X		X	X	X	X		X		X
7200R	8	0%			X		X					X	X	X		N/A	X	X		X	X	
7250R	8	LF			X		X					X	X	X		N/A	X	X			X	
7400	8	0%			X		X					X	X	X	X		X	X		X	X	
7450	8	LF			X		X					X	X	X		N/A	X	X			X	
7500	14	0%			X		X		X			X	X	X	X		X	X		X	X	
7500R	12	0%			X		X		X			X	X	X		N/A	X	X		X	X	
7700R	7	0%			X		X					X	X	X		N/A	X	X		X	X	
7750R	7	LF			X		X					X	X	X		N/A	X	X			X	
7800	8	0%			X		X					X	X	X	X		X	X		X	X	
7850	8	LF			X		X					X	X	X	X	X	X	X			X	
8000	7	3%		X	X		X				X	X	X	X	X	X	X	X			X	



| Photo Credits



PAGE 4	Photo courtesy of HUNTER DOUGLAS, South America.
PAGE 6	Photo courtesy of HUNTER DOUGLAS, South America.
PAGE 8	Photo courtesy of RIELAMERICANO, Buenos Aires, Argentina.
PAGE 10	Photo courtesy of DRAPER INC., Spiceland, Indiana, USA.
PAGE 12	Photo courtesy of BLIND DESIGN, South Africa.
PAGE 16	Photo courtesy of GRUPO AMERICAN CLASSIC, Monterrey, México.
PAGE 18	Photo courtesy of DRAPER INC., Spiceland, Indiana, USA.
PAGE 20	Photo courtesy of DRAPER INC., Spiceland, Indiana, USA.
PAGE 22	Photo courtesy of BLIND DESIGN, South Africa.
PAGE 24	Photo courtesy of TERZA, México.
PAGE 26	Photo courtesy of SOLARFECTIVE, Canada.
PAGE 28	Photo courtesy of BLIND DESIGN, South Africa.
PAGE 30	Photo courtesy of DRAPER INC., Spiceland, Indiana, USA.
PAGE 32	Photo courtesy of DRAPER INC., Spiceland, Indiana, USA.
PAGE 36	Photo courtesy of DRAPER INC., Spiceland, Indiana, USA.
PAGE 38	Photo courtesy of WINDOW INTERIORS, Altamonte Springs, Florida, USA.
PAGE 40	Photo courtesy of DRAPER INC., Spiceland, Indiana, USA.
PAGE 42	Photo courtesy of SOLARFECTIVE, Canada.
PAGE 44	Photo courtesy of BLIND DESIGN, South Africa.
PAGE 48	Photo courtesy of BLIND DESIGN, South Africa.
PAGE 50	Photo courtesy of BLIND DESIGN, South Africa.
PAGE 52	Photo courtesy of SHAW PERFORMANCE FABRICS, Australia.
PAGE 54	Photo courtesy of M+N TEXTILES, The Netherlands.
PAGE 56	Photo courtesy of HUNTER DOUGLAS, USA.
PAGE 58	Photo courtesy of DRAPER INC., Spiceland, Indiana, USA.
PAGE 60	Photo courtesy of DRAPER INC., Spiceland, Indiana, USA.
PAGE 62	Photo courtesy of HUNTER DOUGLAS, South America.
PAGE 64	Photo courtesy of HUNTER DOUGLAS, South America.



P. O. Box 1700 • Tuscaloosa, Alabama 35403-1700 USA
Phone: 205.345.2120 • FAX: 205.391.0799
Toll Free USA/Canada: 1.800.221.5497
phifer.com • ISO Registered







