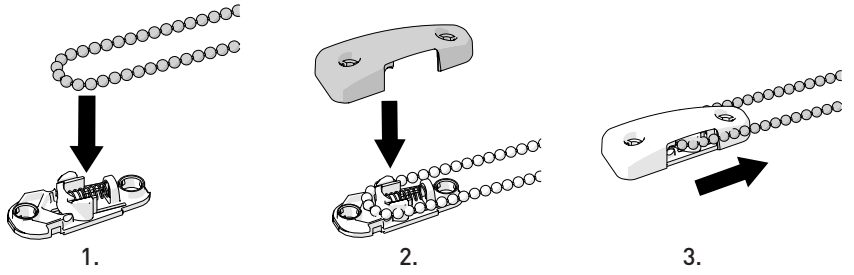


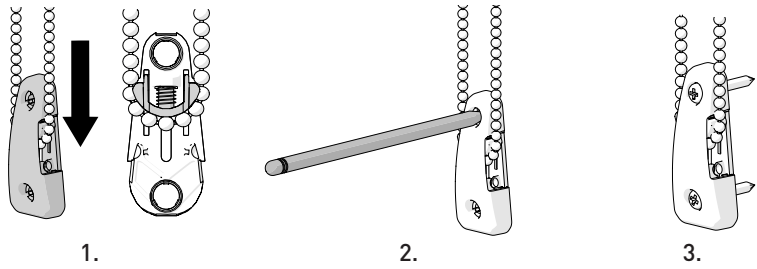
ASSEMBLY

1. Place bead chain on the bottom groove of the Chainhold base.
2. Snap cover onto the base.
3. Pull the chain out of the groove.



INSTALLATION

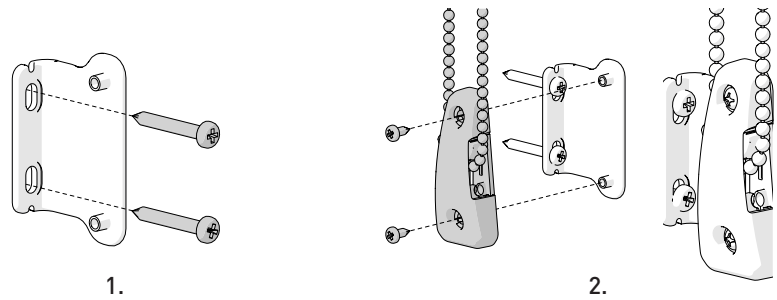
1. Pull the Chainhold down until the chain is fully tensioned (plunger will be fully raised).
2. Mark screw hole locations.
3. Screw device into wall.



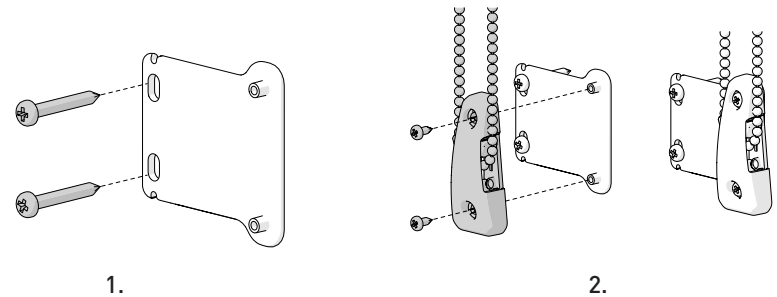
ADDITIONAL MOUNTING OPTIONS

1. With provided screws, install bracket first with large screws (use Chainhold marked screw hole locations as reference).
2. Install Chainhold into bracket with small screws.

OUTSIDE MOUNT



SIDE MOUNT



FLOOR MOUNT

