

RollEase®

UNIVERSAL
5" FASCIA™



We've doubled our technology.

The modularity of the new RollEase® Universal 5" Fascia System™ accommodates one or two roller shades and offers a variety of different configurations.

Enjoy the Versatility of the Universal 5" Fascia System Available Only from RollEase

RollEase is proud to introduce our new patent-pending Universal 5" Fascia System. We created this exciting new product with our customers in mind, making it versatile with its modularity to accommodate almost any system or configuration, manual or motorized.

The Universal 5" Fascia System:

- Supports single and double shade installations
- Eliminates notching of fascia using chain diverters and guides
- Minimizes fascia light gap across the header as the top of the fascia is even with the top of the brackets
- Configures and installs easily for efficient fabrication and installation
- Accepts standard and reverse roll shades easily with reversible mounting fascia
- Facilitates installation into corners of rooms or windows
- Blocks light entering from behind the shades with optional mount of second length of fascia

The Universal 5" Fascia System is available in white, anodized and bronze finishes and compliments our current 3" and 4" Fascia and the Cassette 80 and Cassette 120.

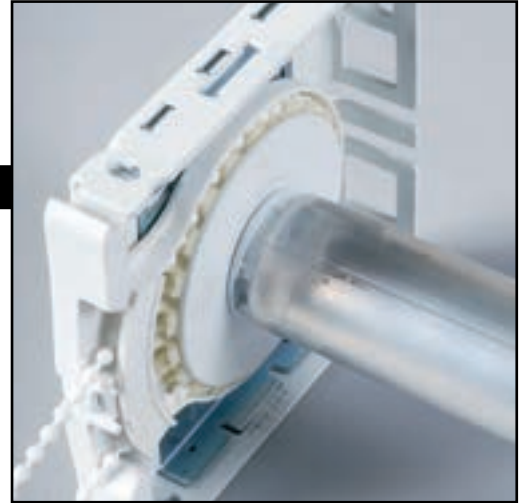


We at RollEase are proud to display our 2011 WCMA Products Honorable Mention Award that we received in the category of "Best New Technical Innovation" for the Universal 5" Fascia System.

Universal 5" Fascia System INTRODUCTION

The RollEase Universal 5" Fascia System provides a modular system for manual and motorized shades. The system can be configured for a single large shade (4-3/4" or 120mm diameter fabric roll) or dual shades (2-3/4" or 70mm diameter fabric roll). In this brochure you will learn how to assemble the system and discover the variety of available options.

The sleek new design provides the most versatile technology available. Its durable elegance offers robust hardware with clean aesthetics.





Pin End and Motor Bracket Assembly

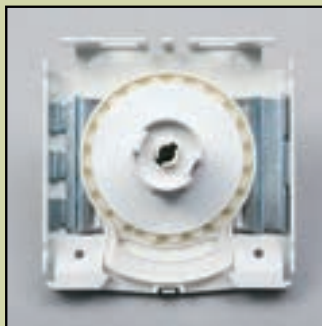
Assembly is a snap!

Current Configurations:

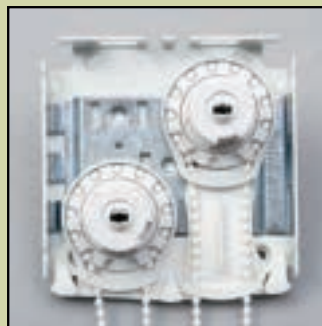
All configurations are based on the common components of the Universal 5" System: Fascia, Fascia Brackets and Bracket Covers. Customizing the fascia installation is accomplished by assembling the appropriate Inserts and Guides into the brackets.



Skyline Single Standard
SL20 or Galaxy Clutch



Skyline Single Large
SL30 or G400 Clutch

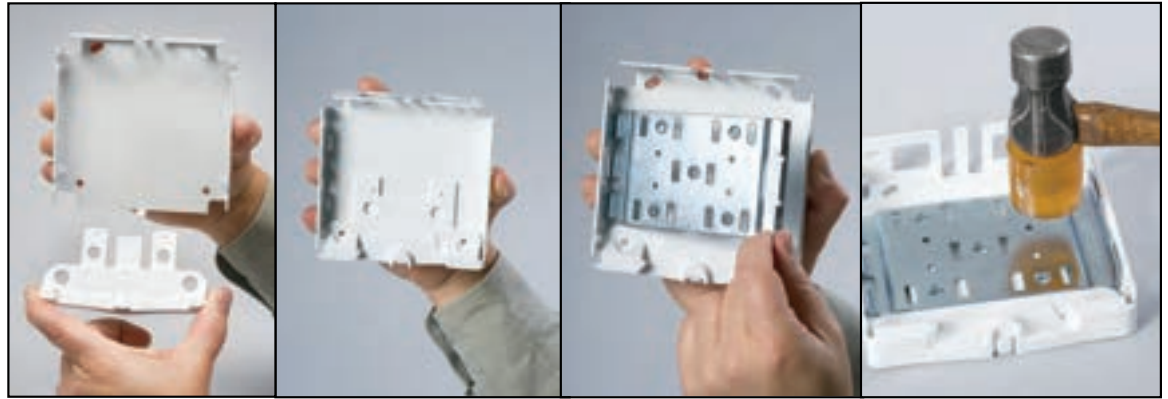


Skyline Double Small
SL15 Clutches



Skyline Double Standard
SL20 or Galaxy Clutches

Coming Configurations: R-Series Single and Double Shade Inserts and Somfy Star Head and ESI-compatible Inserts.



Skyline Single Large Shade Bracket Set

- A.** Remove brackets from bag and orient them upright, with the center tab at the bottom.
- B.** Orient the Single Clutch Diverter on the bracket by aligning the center slot of the diverter with the bottom tab of the bracket.
- C.** The Skyline insert plate is then installed into the bracket, over the diverter, locking the diverter into place. Align the three edge tabs of the insert plate into slots of the bracket.
- D.** Lay the insert plate down into place. Use a mallet to sharply seat the insert plate into its locked position. Be sure the single tab of the insert plate is fully seated into the bracket.
- E.** Secure with set screws if desired.

Prepare both the clutch side bracket and pin end side bracket (see page 9) in the same way. At this point the brackets are ready for installation.



Skyline Single Clutch Bracket Assembly



Skyline Pin End/Motor Bracket Assembly



Skyline Single Standard Shade Bracket

Assemble the bracket set per the instructions for the **Skyline Single Large Shade Bracket Set**.

Once brackets and shades are installed and the chain is positioned in the rear diverter pathway, add the single chain guard and fasten with screws. See photo above.

Exception: If the shades are mounted to an open wall, the screws to mount the bracket can be used to secure the single chain guide.



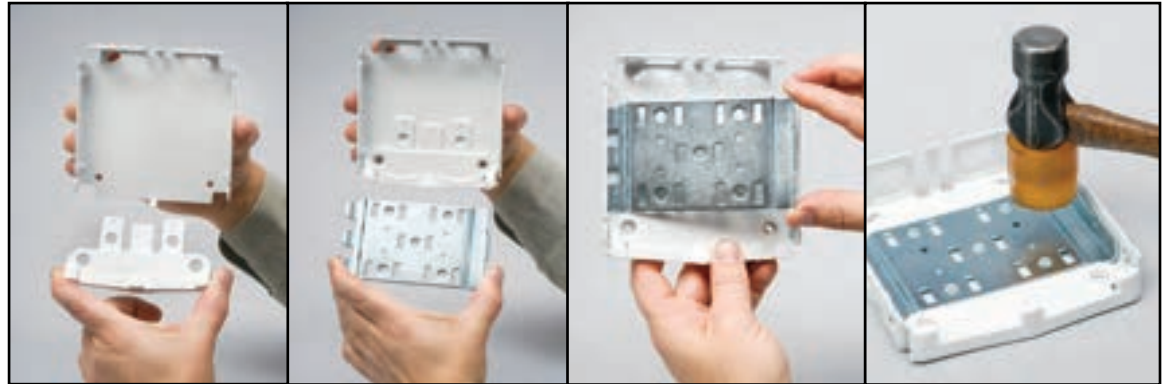
**SINGLE
CHAIN
GUIDE**



**SINGLE CHAIN
GUIDE SCREW**



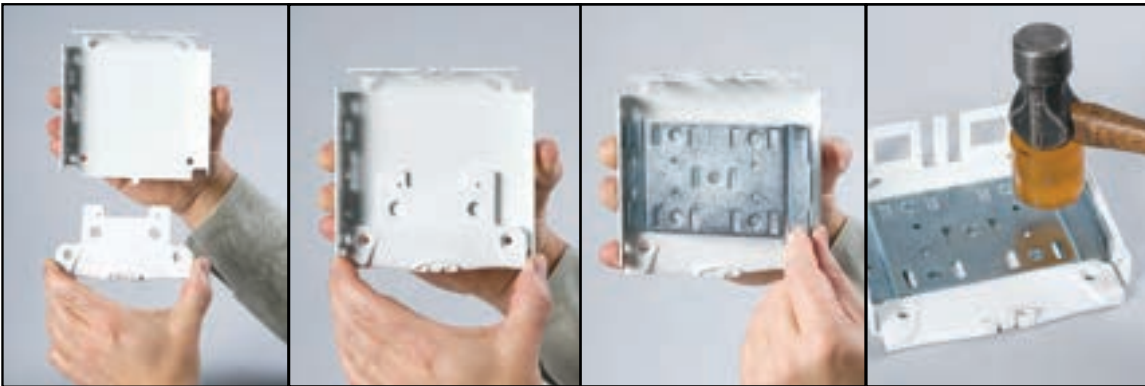
Skyline Dual Shade Bracket Set



- A. Remove brackets from bag and orient them upright, with the center tab at the bottom.
- B. Orient the Dual Clutch Diverter on the bracket by aligning the center slot of the diverter with the bottom tab of the bracket.
- C. The Skyline insert plate is then installed into the bracket, over the diverter, locking the diverter into place. Align the three edge tabs of the insert plate into slots of the bracket.
- D. Lay the insert plate down into place. Use a mallet to sharply seat the insert plate into its locked position. Be sure the single tab of the insert plate is fully seated into the bracket.
- E. Secure with set screws if desired.
- F. Determine which position the upper shade will be located in and install the proper Chain Guide beneath. Be sure that the hooks of the guide are fully seated. There will be an audible click as the Dual Chain Guide is seated. There is a Dual Chain Guide specific for the SL15 and another for the SL20 and Galaxy clutches.
- G. Prepare both the clutch side bracket and pin end side bracket (see page 9) in the same way. At this point they are ready for installation.
- H. Feed the control chain of the shade in the upper position through the Dual Chain Guide prior to installing the shade into the bracket. Install the clutch end of the shade into the bracket being sure to keep the control loop free from any entanglement. Then install the pin end. Be certain the pin of the idler releases and locks into the proper position.



Skyline Pin End and Motor Shade Bracket Set



Both the bracket for the pin end and for motors are the same. If preparing for a motorized installation using RollEase Skyline motor adapters (SLAMST30 or SLAMLS40) prepare two brackets in the same manner.

- A. Remove brackets from bag and orient them upright, with the center tab at the bottom.
- B. Orient the pin end/motor diverter aligned with the bracket and locate the central bottom slot in the diverter with the center tab of the bracket. (The diverter will be locked in place by the insert plate.)
- C. The Skyline insert plate is then installed into the bracket, over the diverter. The three tabs are slid into slots of the bracket.
- D. Lay the insert plate down into place. Use a mallet to sharply seat the insert plate into its locked position. Be sure the single tab of the insert plate is fully seated into the bracket.
- E. Secure with set screws if desired.
- F. Once assembled, the brackets are ready for installation.



Motors compatible with Universal 5" Fascia Brackets fitted with Skyline Inserts using RollEase SLAM adapters:

Somfy 9Nm AC Motor Requirements with Skyline Brackets and RollEase 2" profile tube

Altus40/Sonesse40	Contact Somfy Systems
50mm Crown and Drive w/ Bracket Adapter	RTA5LS40

Somfy Sonesse ST30 requirements with Skyline Brackets and RollEase 1-1/2" profile tube

ST30 Sonesse™ RTS Motor 24Vdc	SOMF1000460
ST30 1.5" Crown & Drive	SOMF9013775
Bracket Adapter (BLK or WH)	SLAMST30(BK/W)
ST30 Wall Mount Plug-In Transformer	SOMF1822209

ESI M40 Motors Requirements with Skyline Brackets and RollEase 2" profile tube

M40S, M40Q or M40RF Motors & Controllers	Contact Electronic Solutions Inc.
50mm Crown and Drive	Contact Electronic Solutions Inc.
Bracket Adapter	SLAMLS40BK

Single Shades

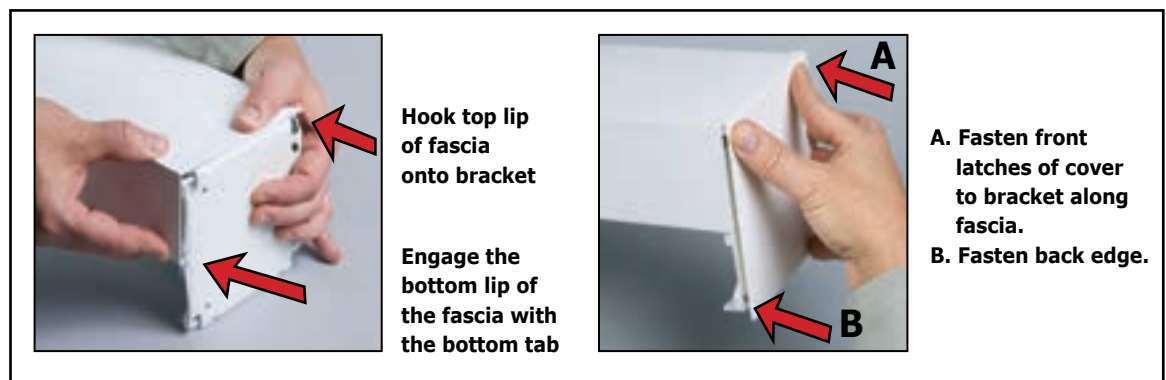
Install brackets as required using proper fasteners and anchors. Install the clutch and motor end of the shade first and then the idler end. The shades should not be supported by the clutch or motor alone as this could cause damage to the clutch or motor. The installation team should support the shade as it is being completely seated into the bracket set.

The shade should be lowered and raised to confirm smooth operation including proper setting of the stops. If manually operated, confirm control chain is routed properly through the chain diverter and guide (if used).

Chain tension devices should be carefully and properly installed.

Cut fascia to proper length. If covers are to be used, be sure fascia is even with the back edge of the bracket or just short of the bracket back edge. If the fascia extends past the bracket, the covers will not properly lock onto the bracket. If covers will not be used, the fascia may extend beyond the brackets.

Attach the fascia by hooking the top lip of the long side of the fascia panel onto the bracket as shown. Swing the bottom of the fascia panel toward the bracket and firmly press at the bottom of the panel until the bottom lip on the fascia engages the center bottom tab of the bracket.



Dual Shades

Outside Mount or Open Wall Mount

Install brackets as required using proper fasteners and anchors. Then the shades should be installed beginning with the one in the upper position. With each shade, install the clutch or motor end first, and then the idler. Be certain to support clutch/motor end of the shade as the idler end is installed. The shades should not be supported by the clutch or motor alone as this could cause damage to the clutch or motor. The installation team should support the shade as it is being completely seated into the bracket set.

The shades should be lowered and raised to confirm smooth operation including proper setting of stops. If manually operated, confirm control chain is routed properly through the chain diverter and guide.

Chain tension devices should be carefully and properly installed.

Cut fascia to proper length. If covers are to be used, be sure fascia is even with the back edge of the bracket or just short of the bracket back edge. If the fascia extends past the bracket the covers will not lock into the bracket. If covers will not be used, the fascia may extend beyond the brackets.

Attach the fascia by hooking the lip of the long side of the fascia panel onto the bottom front tab of the bracket. Swing the fascia panel up over the bracket and firmly press the lip of short side to the panel until the fascia engages the center top tab of the bracket.

Dual Shades

Ceiling Mount, Inside Mount or Partial Inside Mount

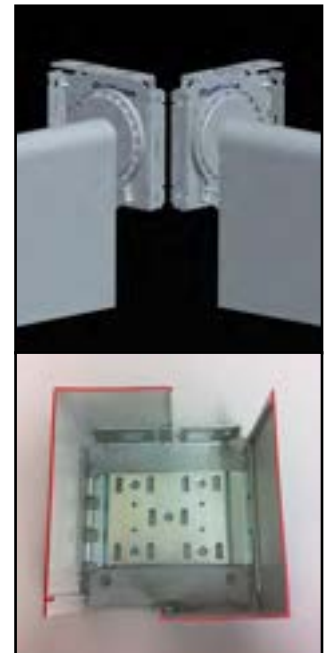
For installation of dual shades with ceiling mount, inside mount or partial inside mount, the brackets and fascia must be pre-assembled before the brackets are mounted. *This is a requirement of the system until the flat fascia panel is available.*

The fascia is first cut to length and the brackets assembled to the fascia at each end. The fascia/bracket assembly is then installed into the desired location. If ceiling mounting, the overhead screws are driven through the fascia panel. Once the fascia/bracket set is securely fastened in place, install the shades beginning with the one in the upper position.

With each shade, install the clutch or motor end first and then the idler end. Be certain to support clutch/motor end of the shade as the idler end is installed. The shades should not be supported by the clutch or motor alone as this could cause damage to the clutch or motor. The installation team should support the shade as it is being completely seated into the bracket set.

The shades should be lowered and raised to confirm smooth operation including proper setting of stops. If manually operated, confirm control chain is routed properly through the Chain Diverter and Chain Guide.

Chain tension devices should be carefully and properly installed.



TOP: With reversed roll shades and reversed fascia, installation into corners of room or windows is facilitated with minimal light gap.

BOTTOM: Using 2 pieces of fascia, blocks light from the window and approximates a contract pocket for an inside mount.

THE SIMPLE BEAUTY OF 5" FASCIA

Start enjoying the versatility of the Universal 5" Fascia System from RollEase. Call your Sales Manager or Customer Service Representative to order your system today!

Visit us at www.rollease.com to view the electronic version of this brochure and discover a RollEase wave of new technology!