

# ASSEMBLY INSTRUCTION MANUAL

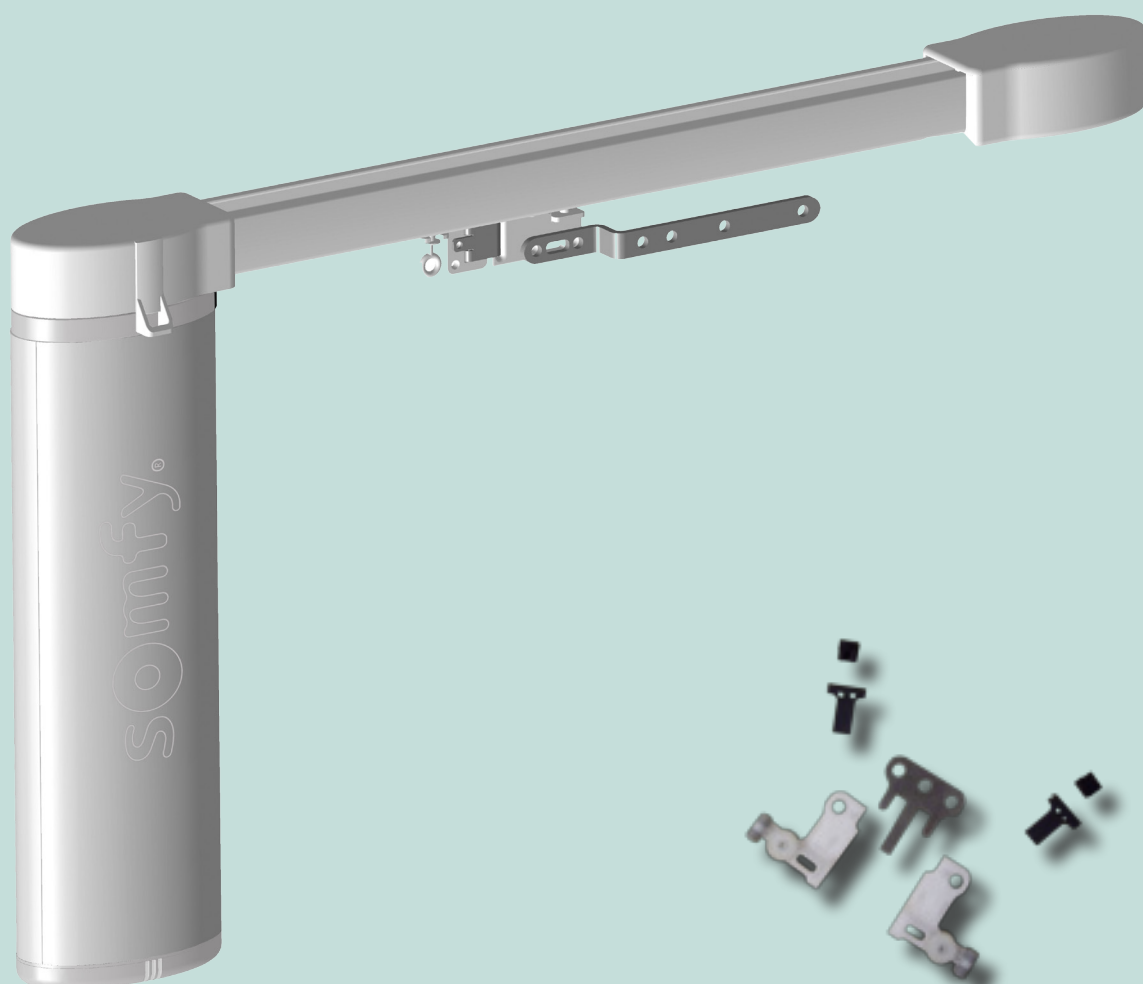
**For GLYDEA motor curtain rail system**

**- straight & bent track ( one & two way ) -**

*- Standard / Pinch pleat Heavy Duty -*

*- Ripple fold -*

*- Butt arm -*



Heavy duty  
master carrier GA

# TOOLS NEEDED



Measuring tape



Rail cutter machine



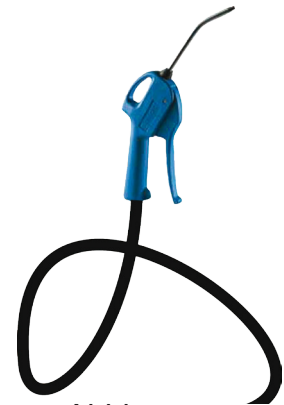
Stand for rail cutting



Protective glasses



Precision files



Airblow gun



Screwdrivers



Pen



Scissors

# TOOLS NEEDED



Pliers



Work bench



Cleaning product

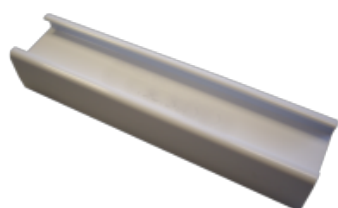
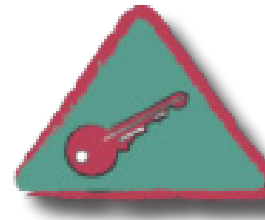


Drilling machine



Spirit level

**KEY POINT PAY ATTENTION TO THIS STEP**



The template size depends on the master carrier type

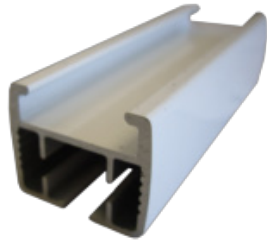


key for master carrier GA

**WARNING POINT COMPULSARY STEP**



# PART LIST FOR STANDARD/PINCH PLEAT GLYDEA 35



Rail



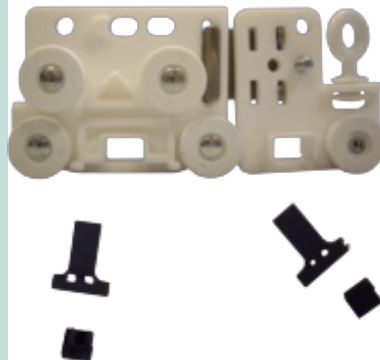
Belt reel



Pulley GA



Drive pulley GA



Master carrier GA



Straight arm GA 35



Rotating eye runner GA

Hight performance  
Rotating eye runner

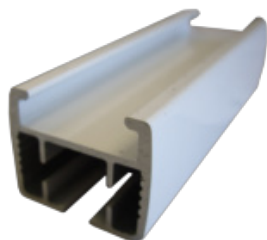


Motor hook GA



Overlap arm GA 35

# PART LIST FOR STANDARD/PINCH PLEAT HEAVY DUTY



Rail



Belt reel



Pulley GA



Drive pulley GA



Heavy duty  
master carrier GA



Heavy duty  
Overlap arm kit GA



Rotating eye runner GA

Hight performance  
Rotating eye runner



Motor hook GA



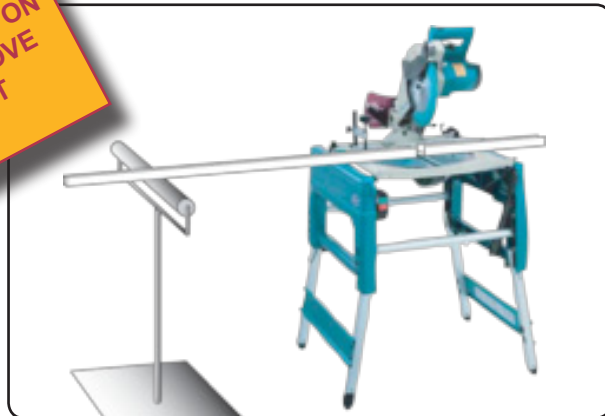
Heavy duty  
Straight arm GA

# ASSEMBLY INSTRUCTIONS

## standard / Pinch pleat

### 1 - RAIL CUT -

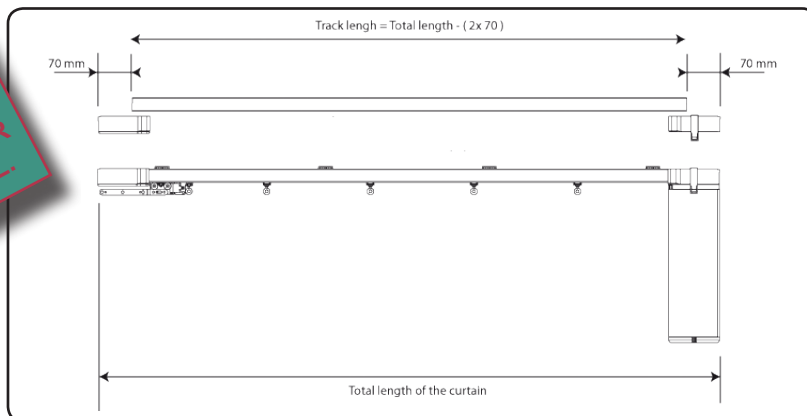
**CUT FROM A NEW RAIL 2cm ON THE BOTH SIDE TO REMOVE ANY DAMAGED PART**



#### CUTTING SIZE

TOTAL CURTAIN LENGTH - 140 mm (PULLEYS LENGTH = 2 x 70 mm)

**IN CASE OF TRACK LINKS BEFORE ATTACHING MASTER CARRIER TO BELT, MAKE SURE MASTER CARRIER MOVES FREELY THROUGH THE RAIL.**



**DEBURR THE RAIL WITH A FILE TO GET SMOOTH EDGES**



**BLOW OFF METAL POWDER & CHIPS WITH THE AIRBLOW GUN**



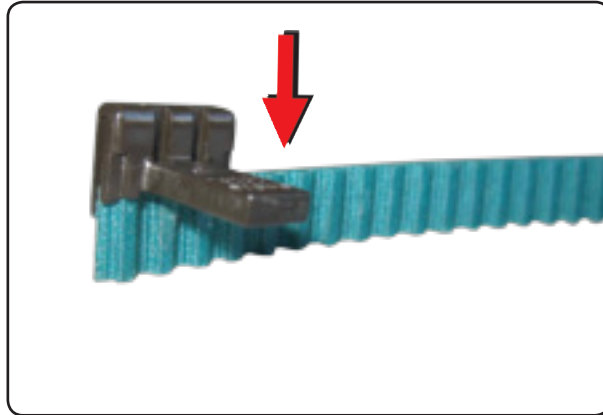
### TOOLS



# ASSEMBLY INSTRUCTIONS

## standard / Pinch pleat

### 2 - PLACE THE BELT HOLDER -



### 3 - PLACE THE MASTER CARRIER HEAVY DUTY -



#### TOOLS

**NO**



**DO NOT SNAP THE MASTER CARRIER BELT HOLDER ON THE BELT**



**INSERT THE BELT WITH THE TEETH TOWARD THE RAIL CENTER**



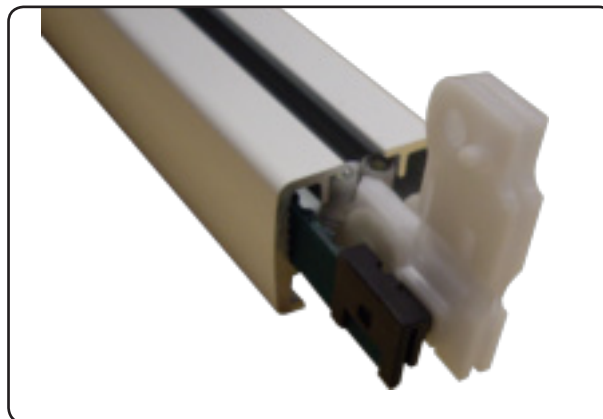
# ASSEMBLY INSTRUCTIONS

## standard / Pinch pleat

**4 - SLIDE THE HD\* MASTER CARRIER INTO THE RAIL -**



**5 - PULL THE HD\* MASTER CARRIER THROUGH THE RAIL -**



HD\* =  
HEAVY DUTY



INSERT THE BELT WITH THE TEETH TOWARD THE RAIL CENTER



FOR BENT TRACK PLACE THE MASTER CARRIER ON THE BIGGER RADIUS TRACK SIDE



### TOOLS

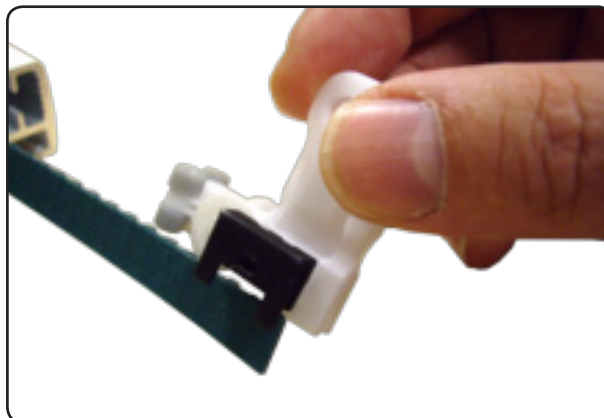
# NO



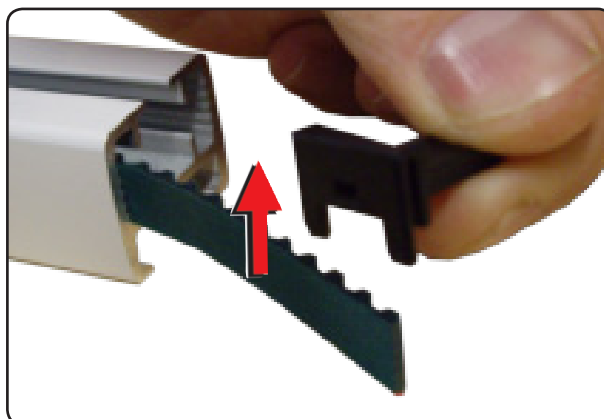
# ASSEMBLY INSTRUCTIONS

## standard / Pinch pleat

### 6 - REMOVE THE HD\* MASTER CARRIER -



### 7 - REMOVE THE BELT HOLDER -



HD\* =  
HEAVY DUTY

### TOOLS

**NO**

# ASSEMBLY INSTRUCTIONS

## standard / Pinch pleat

### 9 - UNSCREW THE STOPPERS ON BOTH PULLEYS -



### TOOLS



# ASSEMBLY INSTRUCTIONS

## standard / Pinch pleat

10 - SLIDE THE BELT TROUGH THE PULLEY GA -



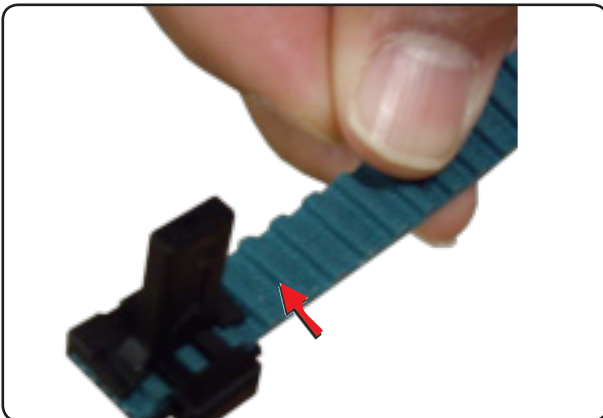
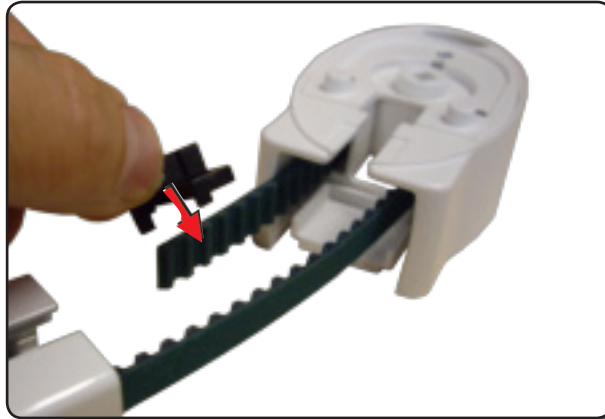
### TOOLS

**NO**

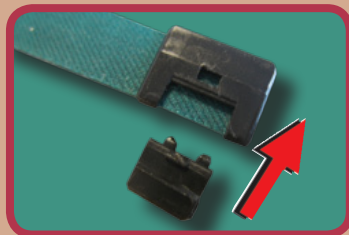
# ASSEMBLY INSTRUCTIONS

## standard / Pinch pleat

11 - PLACE THE BELT HOLDER & SNAP IT -



SNAP THE BELT HOLDER



**TOOLS**

**NO**

# ASSEMBLY INSTRUCTIONS

## standard / Pinch pleat

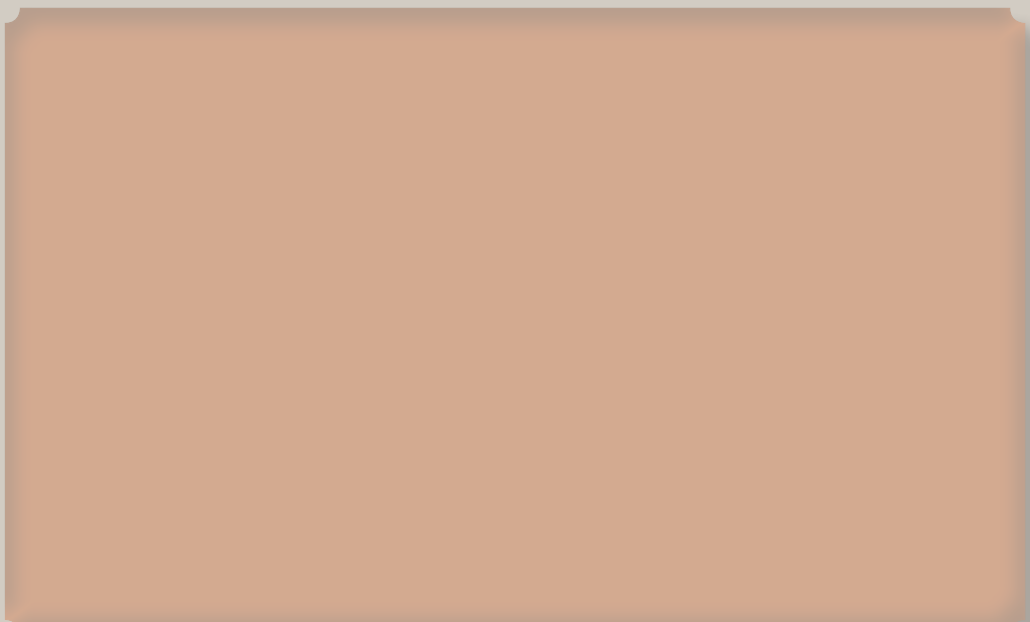
12 - PLACE THE HD\* MASTER CARRIER -



HD\* =  
HEAVY DUTY

### TOOLS

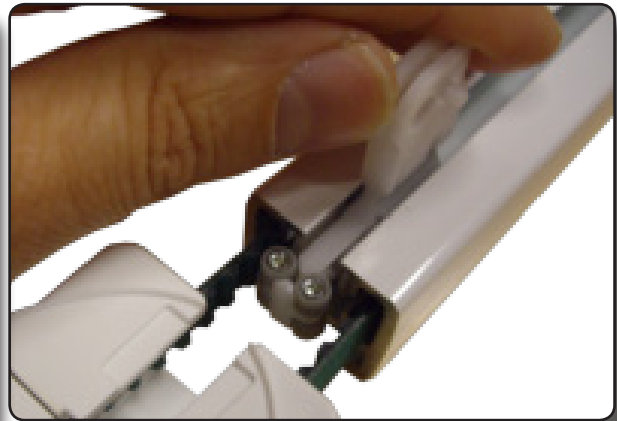
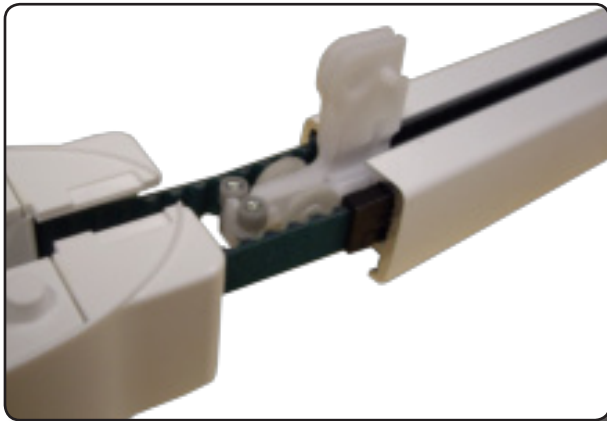
**NO**



# ASSEMBLY INSTRUCTIONS

## standard / Pinch pleat

13 - SLIDE THE HD\* MASTER CARRIER IN THE RAIL -



HD\* =  
HEAVY DUTY

**TOOLS**

**NO**

# ASSEMBLY INSTRUCTIONS

## standard / Pinch pleat

14 - FIT THE PULLEY ONTO THE RAIL -

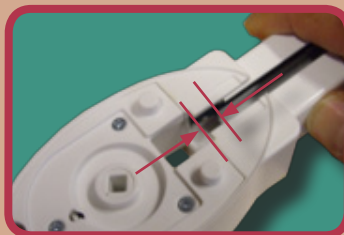


### TOOLS



ENSURE THAT THE RAIL EXTREMITY TOUCH THE DRIVE PULLEY BOTTOM.

**NO**



# ASSEMBLY INSTRUCTIONS

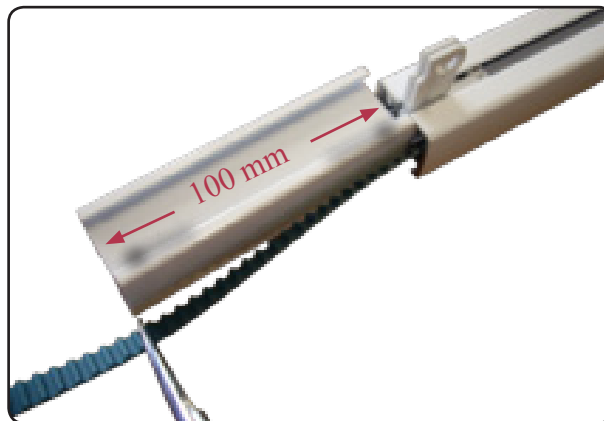
## standard / Pinch pleat

15 - PULL HD\* MASTER CARRIER THROUGH RAIL -

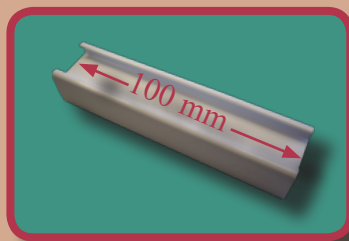


HD\* =  
HEAVY DUTY

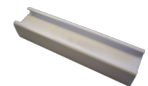
16 - PLACE THE TEMPLATE & CUT THE BELT-



MAKE A TEMPLATE WITH A PIECE OF RAIL.  
THE TEMPLATE LENGTH FOR THE HEAVY DUTY MASTER CARRIER  
GA IS 100 mm or 20 TEETH



### TOOLS





# **ASSEMBLY INSTRUCTIONS**

## **standard / Pinch pleat**

---

# **TWO WAY ASSEMBLY SPECIFICITY**

---

# ASSEMBLY INSTRUCTIONS

## standard / Pinch pleat

**16 (01) - HOLD THE BELT ON THE TEMPLATE -**



**16 (02) - PULL OUT THE OPPOSITE PULLEY -**



**THE TEMPLATE MUST TOUCH THE RAIL AND THE HD MASTER CARRIER MUST BE PUSHED ONTO THE TEMPLATE**



### TOOLS



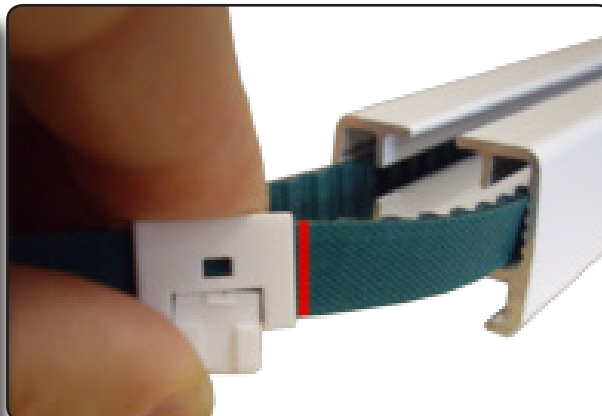
# ASSEMBLY INSTRUCTIONS

## standard / Pinch pleat

**16 (03) - MAKE A MARK AT THE END OF THE RAIL ON THE BELT LOCKED SIDE -**



**16 (04) - UNHOLD THE BELT THEN PLACE ONLY ONE BELT HOLDER ON THE BELT -**

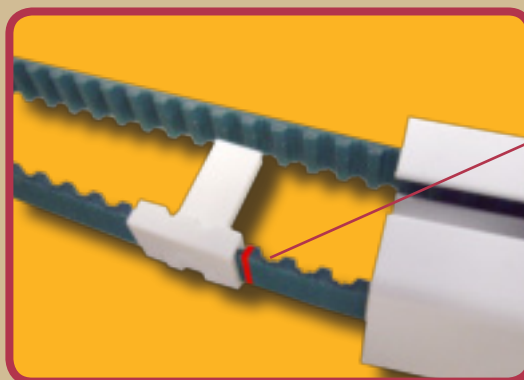


### TOOLS



**PLACE ONLY ONE BELT HOLDER BETWEEN THE MARK AND THE PULLEY AT ONE TOOTH**

**PULLEY SIDE**

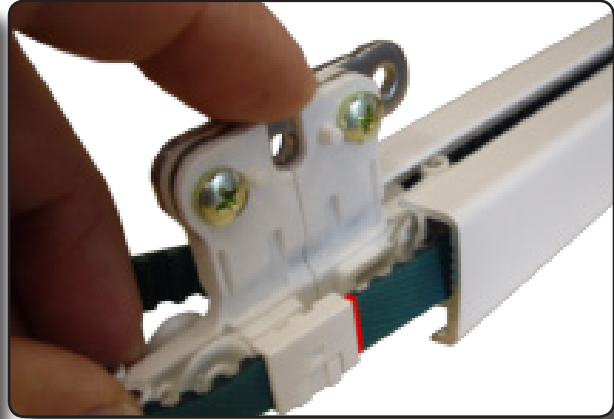
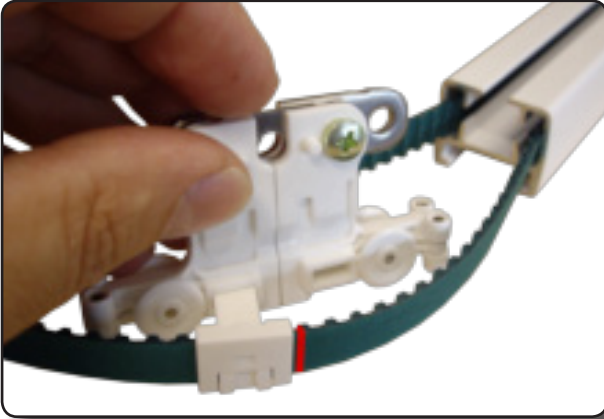


**1 x TOOTH**

# ASSEMBLY INSTRUCTIONS

## standard / Pinch pleat

**16 (05) - PLACE & SLIDE THE HD\* MASTER CARRIER -**



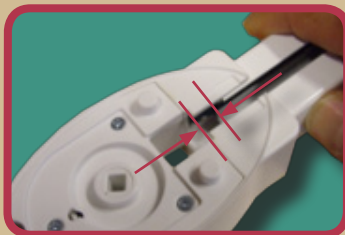
**16 (06) - FIT THE PULLEY GA -**



HD\* =  
HEAVY DUTY



ENSURE THAT THE RAIL EXTREMITY TOUCH THE DRIVE PULLEY  
BOTTOM.



### TOOLS

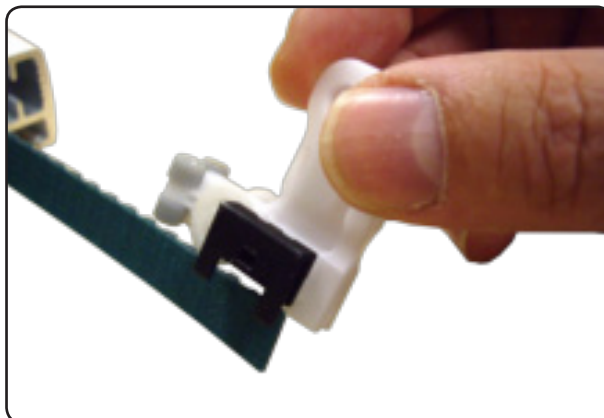
# NO

# ASSEMBLY INSTRUCTIONS

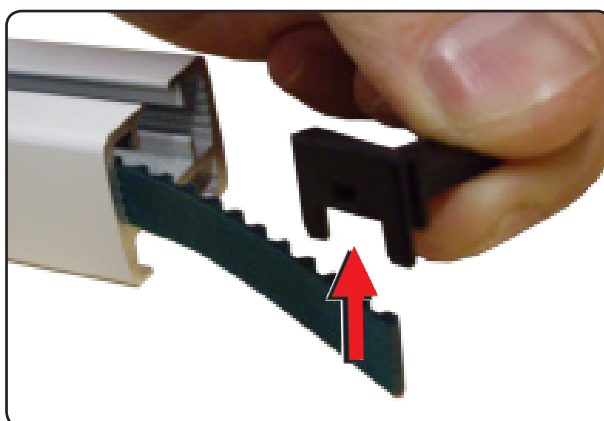
## standard / Pinch pleat

### 17 - REMOVE THE HD\* MASTER CARRIER -

  
HD\* =  
HEAVY DUTY



### 18 - REMOVE THE BELT HOLDER -



#### TOOLS

**NO**

# ASSEMBLY INSTRUCTIONS

## standard / Pinch pleat

19 - SLIDE THE BELT TROUGH THE DRIVE PULLEY -



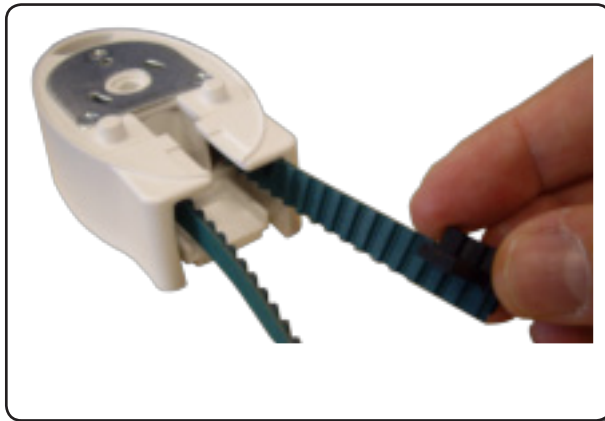
**TOOLS**

**NO**

# ASSEMBLY INSTRUCTIONS

## standard / Pinch pleat

20 - PLACE THE BELT HOLDER & SNAP IT -

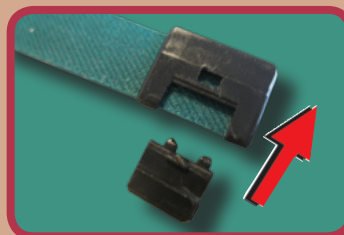


### TOOLS



**NO**

SNAP THE BELT HOLDER



# ASSEMBLY INSTRUCTIONS

## standard / Pinch pleat

21 - PUT IN PLACE THE HALF PART OF THE HD\* MASTER CARRIER -



HD\* =  
HEAVY DUTY

### TOOLS

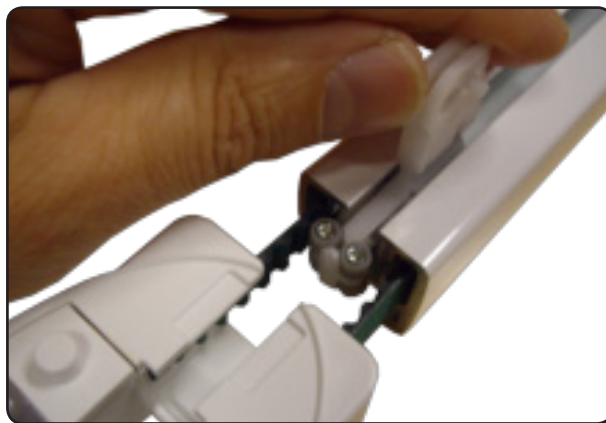
**NO**



# ASSEMBLY INSTRUCTIONS

## standard / Pinch pleat

22 - SLIDE THE HALF PART OF THE HD\* MASTER CARRIER IN THE RAIL -



HD\* =  
HEAVY DUTY

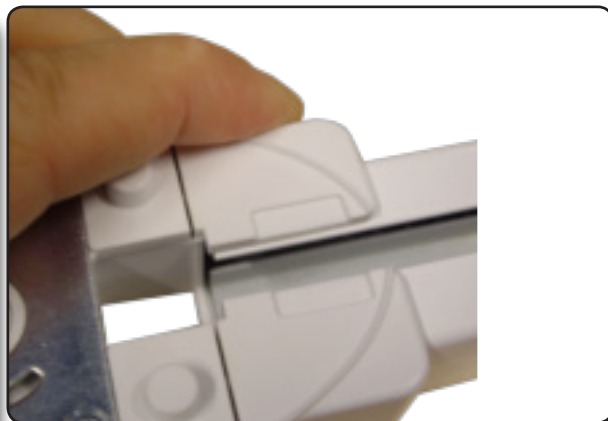
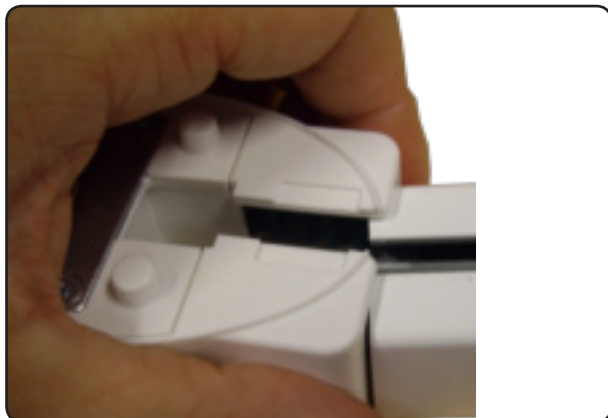
### TOOLS

**NO**

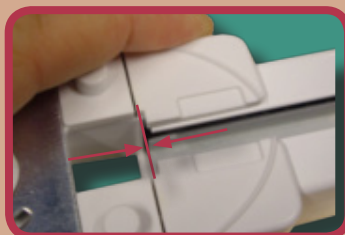
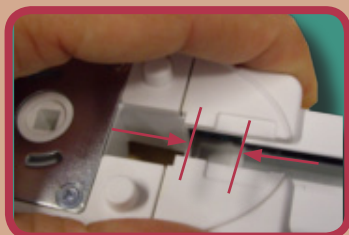
# ASSEMBLY INSTRUCTIONS

## standard / Pinch pleat

### 23 - FIT THE DRIVE PULLEY GA -



ENSURE THAT THE RAIL EXTREMITY TOUCH THE DRIVE PULLEY BOTTOM.



**TOOLS**

**NO**

# ASSEMBLY INSTRUCTIONS

## standard / Pinch pleat

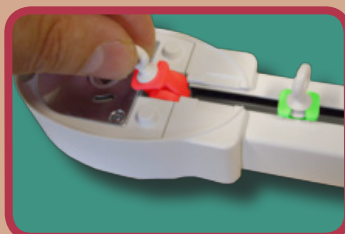
### 24 - INSERT CARRIERS -



#### TOOLS



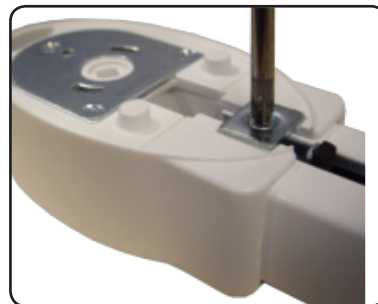
PLACE ALL THE CARRIERS BY THE SAME WAY



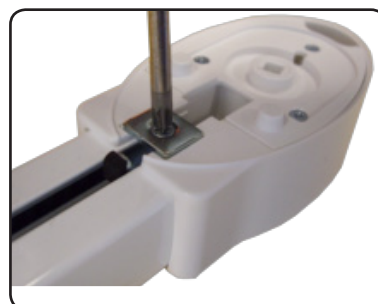
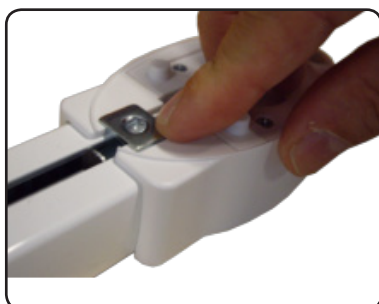
# ASSEMBLY INSTRUCTIONS

## standard / Pinch pleat

### 25 - PLACE THE DRIVE PULLEY STOPPER -



### 26 - PLACE THE PULLEY GA STOPPER -



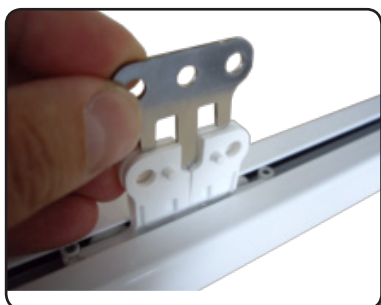
### TOOLS



# ASSEMBLY INSTRUCTIONS

## standard / Pinch pleat

27 - SCREW THE HD\* OVERLAP ARM (one way) -



HD\* =  
HEAVY DUTY



### TOOLS



# ASSEMBLY INSTRUCTIONS

## standard / Pinch pleat

28 bis - SCREW THE HD\* OVERLAP ARM (two way) -

STANDARD HD\* STRAIGHT ARM GA



HD\* =  
HEAVY DUTY

OPTIONAL HD\* STRAIGHT ARM GA



### TOOLS



# ASSEMBLY INSTRUCTIONS

## standard / Pinch pleat

29 - SNAP THE COVER ON THE PULLEY GA -



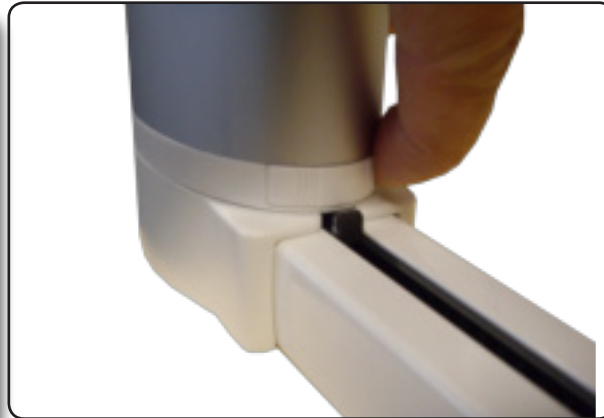
### TOOLS

**NO**

# ASSEMBLY INSTRUCTIONS

## standard / Pinch pleat

**30 - SLIDE THE THE CABLE TROUGHT THE DRIVE PULLEY & LOCK THE MOTOR ON THE DRIVE PULLEY -**



FOR WIRING AND SETTING  
PLEASE REFER TO OUR INSTALLATION GUIDE PROVIDED WITH  
THE MOTOR;

**TOOLS**

**NO**



