



Control4[®]

INTEGRATION FOR
TAHOMA[®] RTS

TABLE OF CONTENTS

I.	OVERVIEW -----	3
	INTRODUCTION	
	RESOURCES & APPLICATIONS	
II.	SETUP -----	4
	SYSTEM REQUIREMENTS	
	CONNECTIONS & INDICATORS	
	SYSTEM CONFIGURATION	
	ADD TAHOMA INTERFACE DEVICE TO PROJECT	
	REQUEST AUTHORIZATION TOKEN	
	ADD TAHOMA BLIND DEVICE TO PROJECT	
	APPENDIX -----	9
	A. AVAILABLE COMMANDS & ACTIONS	

I. OVERVIEW

INTRODUCTION

The Somfy Organization strength has been demonstrated with 50 years of experience in motorization. Leading the shading industry with innovation and modernization solutions for homes and commercial buildings. Offering the widest range of strong, quiet motors and controls for all types of applications and technologies.

Who is this Guide for?

This guide is aimed at providing support and guidance to Control4 System Integrators, achieving complete automation of Radio Technology Somfy® (RTS) motors and the Somfy TaHoma® Smartphone and Tablet Interface.

What does this Guide contain?

The sections of this guide contain walkthroughs and methods of controlling RTS motors using the TaHoma® Smartphone and Tablet Interface as the bridge between the AV System and Smart Shading by Somfy.

This guide discusses common methods of integration with Control4.

For advanced technical support contact:

Somfy Technical Support at 1-800-227-6639

technicalsupport_us@somfy.com

How to use this Guide?

This guide is designed as a reference manual. Use the table of contents, then follow along in the instruction.

RESOURCES & APPLICATIONS

Visit www.somfypro.com for the following guides:

- [Somfy TaHoma Smartphone and Tablet Interface Programming Guide](#)
 - [Somfy RTS Pocket Programming Guide](#)

Subscribe to the Somfy YouTube Channel www.youtube.com/somfysystems

Visit the Google Play or iOS App Store for the Somfy TaHoma North America App:



Google Play Store



iOS App Store

II. SETUP

The Somfy TaHoma® Smartphone and Tablet Interface provides a single platform for Somfy RTS and future ecosystems with a wide range of interior and exterior applications.

- The TaHoma® Interface supports up to 40 RTS channels
- Install up to 10 interfaces as zone controllers to increase the RTS range
- The TaHoma® can support a maximum of 40 scenes with schedules per install

Each TaHoma Interface is connected to Wi-Fi or directly to the local area network by an optional Ethernet Adaptor for IP Integration with third-party control systems. TaHoma® is compatible with the Somfy Synergy™ API.

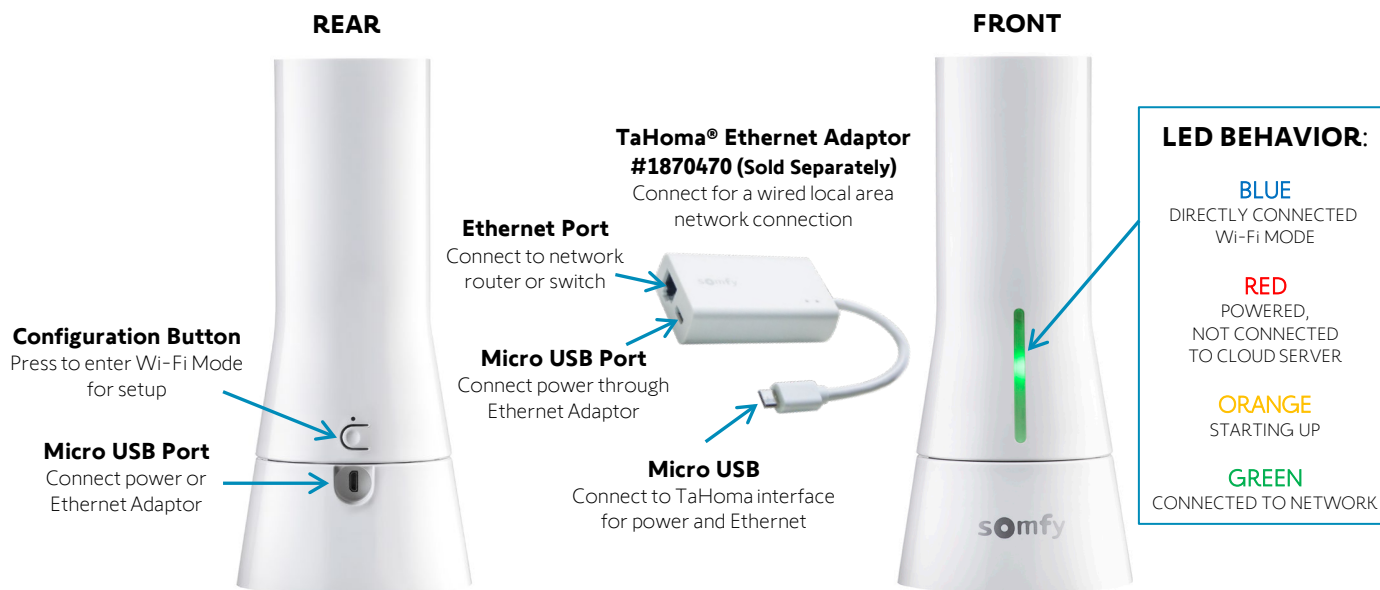
Details of this controller and commissioning instruction is available in the Somfy TaHoma Smartphone and Tablet Interface Programming Guide.

SYSTEM REQUIREMENTS

PC running Windows 10 or higher
Control4® Composer Software 2.6 or newer
Control4® Somfy TaHoma Interface Driver
Control4® Somfy TaHoma Blind Driver



CONNECTIONS & INDICATORS



SYSTEM CONFIGURATION

A fully operational TaHoma system is required prior to Control4 programming. The TaHoma Interface supports up to 40 channels of RTS. RTS devices programmed to an RTS channel will only receive commands from the associated TaHoma Interface. Interfaces must be placed within 25-35' of the RTS devices they control.

- Confirm with Shade Commissioning Agent that the TaHoma Interface firmware is up to date
- An Integration Report is generated in the TaHoma App which will include the TaHoma Interface PIN and IP address
 - An Authorization Token is required for Third-Party Integration and must first be enabled in the TaHoma App
 - SSDP is supported

ADD TAHOMA INTERFACE DEVICE TO PROJECT

A fully operational TaHoma system is required prior to Control4 programming. An Authorization Token is required for Third-Party Integration and must first be enabled in the TaHoma App. Reference the Integration Report for the TaHoma Interface IP address. Ensure using a MAC-based address reservation. A Somfy TaHoma Interface driver is required for each TaHoma Interface installed.

There are two methods to add the TaHoma Interface device to a Project:

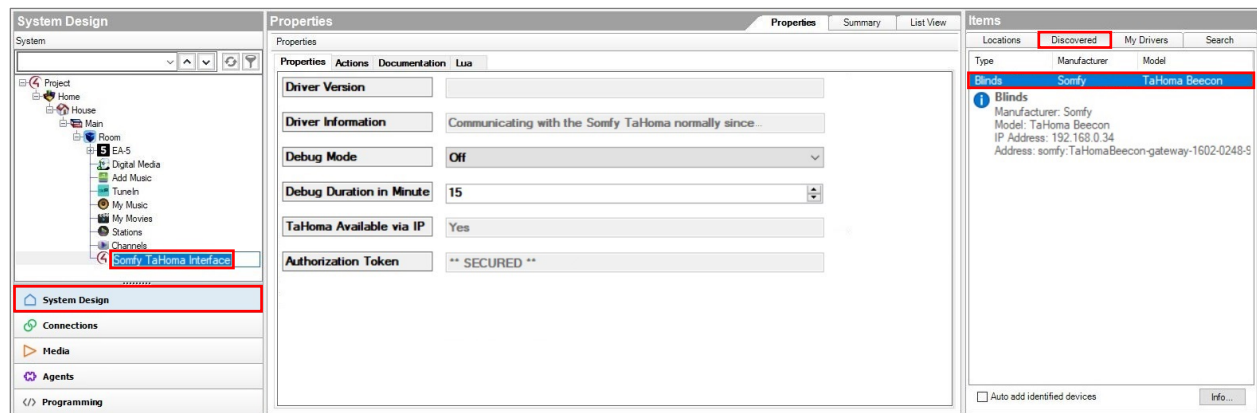
- A. via SDDP Discovery or
- B. via searching the Composer Driver Database

METHOD A – Add the TaHoma Interface Device via SDDP Discovery:

Reference the Somfy TaHoma driver set details located in the device Documentation tab.

- 1) In the Composer System Design view, Project tree, select a Room in which a device is to be added
- 2) Go to the Items pane, select the Discovered tab
- 3) Locate the TaHoma device, double or right click to Add to Project, automatically connecting the IP address
- 4) Rename the device to the associated location or room
- 5) Go to the device Properties tab
- 6) Verify the device Driver Information status displays “Communicating with the Somfy TaHoma normally since...”
- 7) Ensure the Authorization Token property displays ** SECURED **

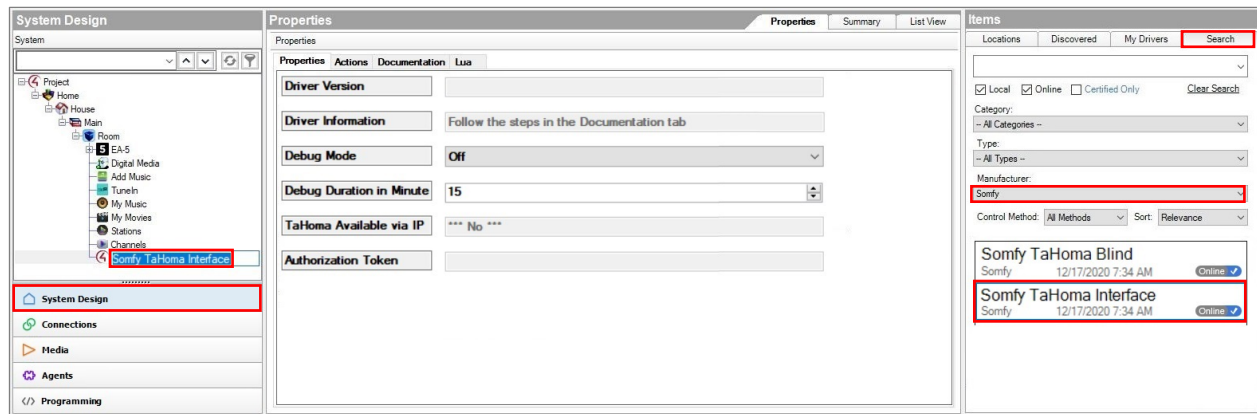
If the Authorization Token property is blank or displays “Use the App to re-enable a new Token”, refer to Requesting Authorization Token of this Guide. Third-Party Integration must be enabled in the TaHoma App.



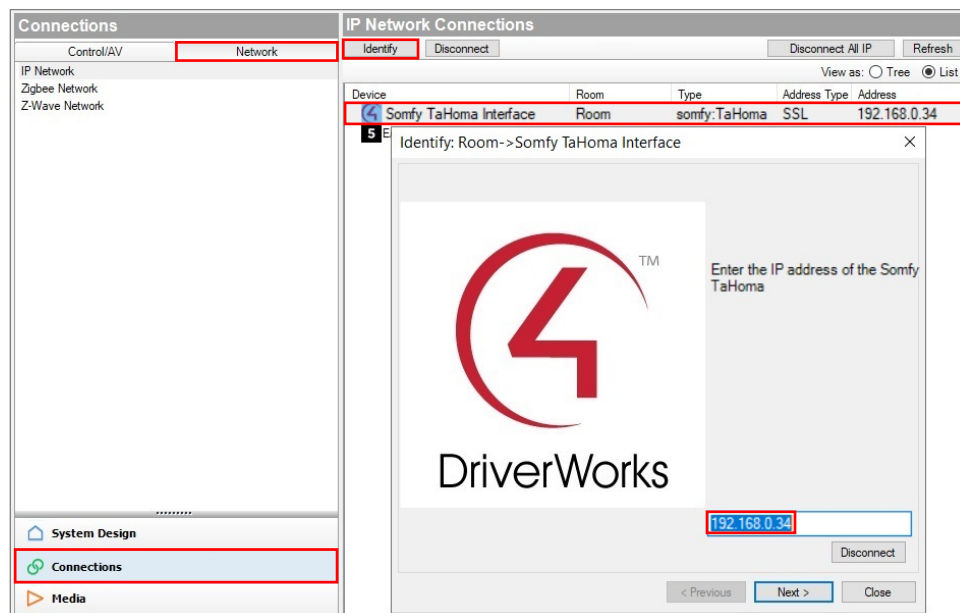
METHOD B – Add the TaHoma Interface Device via searching the Composer Driver Database:

Reference the Somfy TaHoma driver set details located in the device Documentation tab.

- 1) In the Composer System Design view, Project tree, select a Room in which a device is to be added
- 2) Go to the Items pane, select the Search tab
- 3) In the Manufacturer dropdown list, select Somfy
- 4) Locate the Somfy TaHoma Interface driver, double or right click the driver to Add to Project
- 5) Rename the device to the associated location or room



- 6) Navigate to the Connections view, Network tab
- 7) In the IP Network Connections pane, select the Somfy TaHoma Interface in the Device list
- 8) Double-click the Somfy TaHoma Interface device or click Identify
- 9) Enter the IP address of the Somfy TaHoma Interface, then click Close



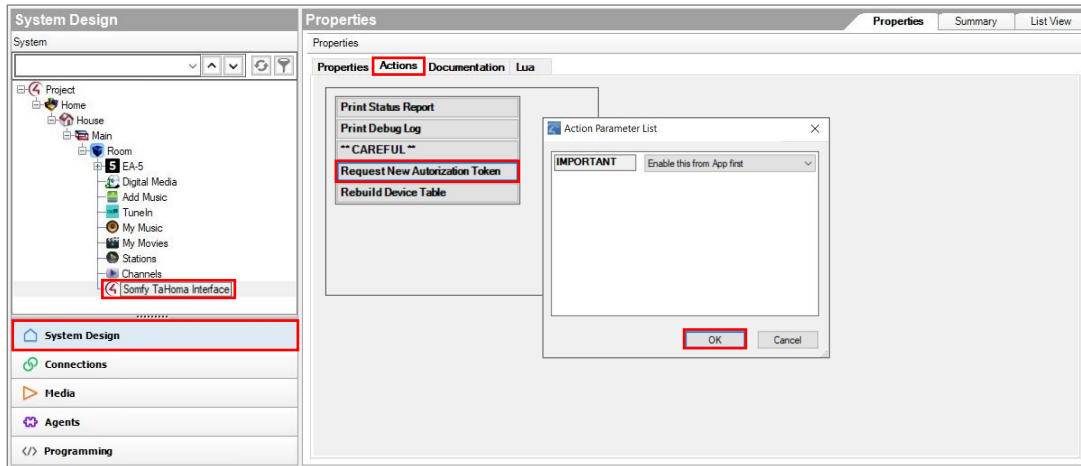
- 10) Return to the System Design view, device Properties tab
- 11) Verify the device Driver Information status displays "Communicating with the Somfy TaHoma normally since..."
- 12) Ensure the Authorization Token property displays ** SECURED **

NOTE: If the Authorization Token property is blank or displays "Use the App to re-enable a new Token", refer to Requesting Authorization Token of this guide. Third-Party Integration must be enabled in the TaHoma App.

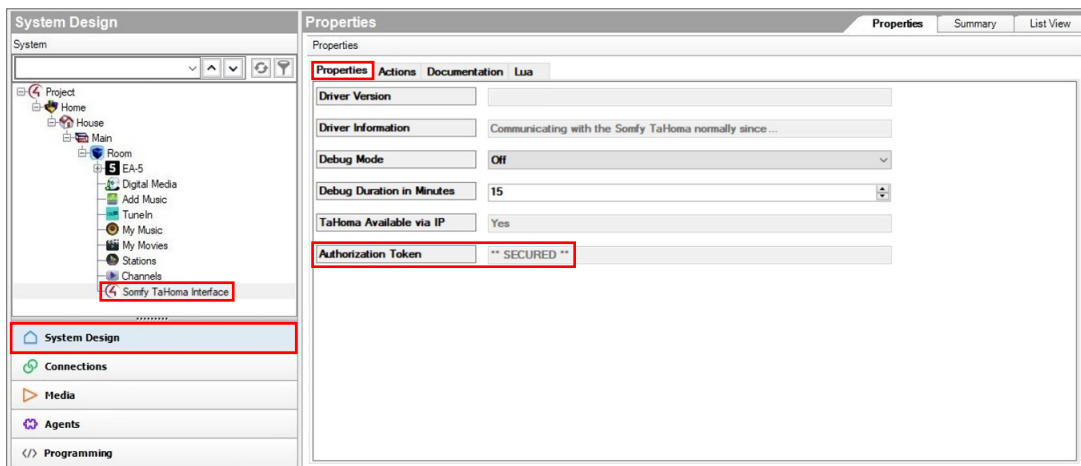
REQUEST AUTHORIZATION TOKEN

An Authorization Token is required for Third-Party Integration and must be enabled first in the TaHoma App. If a Sonfy TaHoma Interface device is deleted, the new Interface device will need a new Authorization Token requested.

- 1) Confirm Third-Party Integration for Control4 is enabled in the TaHoma App
 - In the TaHoma App, go to Settings, Third-Party Integrations, Control4, Enable / Refresh integrations
- 2) In the Composer System Design view, device Actions tab, click Request New Authorization Token
- 3) The Action Parameter List window will display "Enable this from App first", click OK



- 4) Return to the System Design view, device Properties tab
- 5) Ensure the Authorization Token property displays ** SECURED **



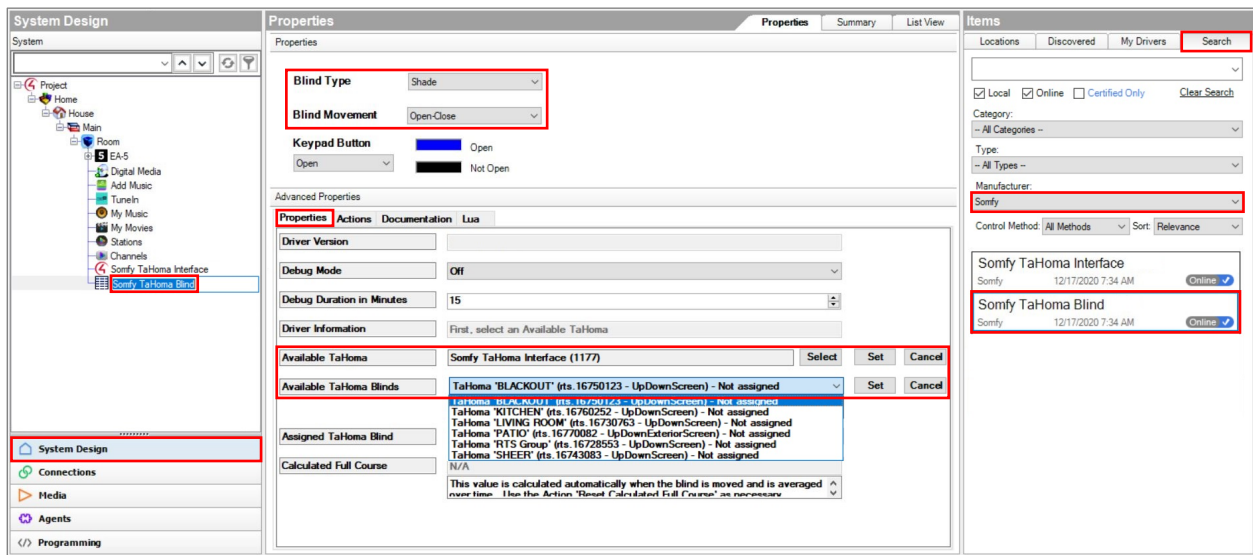
ADD TAHOMA BLIND DEVICE TO PROJECT

Reference the Somfy TaHoma Driver Set details located in the device Documentation tab.

When adding an RTS blind or blind group, only use the Somfy TaHoma Blind driver. Do not use the generic Control4 Blind Group.

A Somfy TaHoma Blind driver is required for each TaHoma Blind installed.

- 1) In the System Design view, Project tree, select a Room in which a device is to be added
- 2) Go to the Items pane, select the Search tab
- 3) In the Manufacturer dropdown list, select Somfy
- 4) Locate the Somfy TaHoma Blind driver, double or right click the driver to Add to Project
- 5) Rename the device to the associated location or name of blind
- 6) Select the appropriate Blind Type for the product in the dropdown
- 7) Select the appropriate Blind Movement for the product in the dropdown
- 8) In the Advanced Properties tab, Available TaHoma, select the TaHoma Interface in the dropdown, then click Set
- 9) In the Available TaHoma Blinds dropdown, select the RTS Blind, then click Set



If a blind is not listed, use the "Refresh All Devices" action to update the Available Blinds list. Refresh time may vary per system size.

- Go to the device Actions tab, click Refresh All Devices List, then repeat step 9

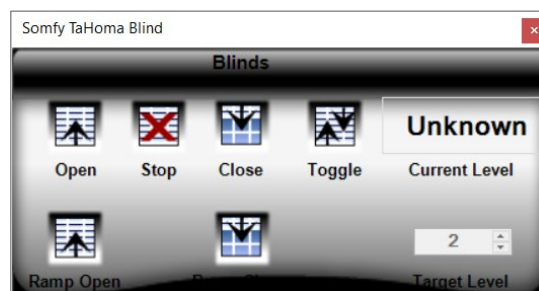
- 10) Double-click the blind or blind group device to test each button operation

See Appendix A of this guide for a list of Somfy TaHoma Blind device specific commands and actions. RTS motors do not report positional feedback.

The TaHoma Blind Current Level will display "Unknown" and Target Level control is unavailable for all RTS motors.

RTS motors are capable of one programmable "My" or favorite position that requires a Stop command when the motor is at rest.

A Control4 Custom Button must be created to achieve this position by mapping the "My" command to the "Set Blind to IP" command.



APPENDIX

[APPENDIX A] AVAILABLE COMMANDS & ACTIONS

TAHOMA RTS BLIND	
Open	Moves blind to the fully open position
Close	Moves blind to the fully closed position
Toggle	Sequence controls blind close-open
Stop	Stops blind when moving
My	Moves blind to the programmed My position if blind is at rest (Requires a Control4 custom button to be programmed)

ABOUT SOMFY

SOMFY® has been improving everyday life for more than 270 million people by designing and manufacturing intelligent motorization solutions for interior window coverings and exterior solar protections. Somfy innovates to automate and connect shades, blinds, draperies, awnings, rolling shutters, exterior screens & pergolas for commercial and residential buildings in 58 countries across the globe. With 170+ million motors produced over the last half century, Somfy is committed to creating reliable and sustainable solutions that promote the best way of living and well-being for all.

FOR QUESTIONS OR ASSISTANCE PLEASE CONTACT TECHNICAL SUPPORT:

(800) 22-SOMFY (76639)

technicalsupport_us@somfy.com

SOMFY SYSTEMS INC

SOMFY NORTH AMERICAN HEADQUARTERS

121 Herrod Blvd.

Dayton, NJ 08810

P: (609) 395-1300

F: (609) 395-1776

FLORIDA

1200 SW 35th Ave.

Boynton Beach, FL 33426

F: (561) 995-7502

CALIFORNIA

15301 Barranca Parkway

Irvine, CA 92618-2201

F: (949) 727-3775

SOMFY ULC

SOMFY Canada Division

5178 Everest Drive

Mississauga, Ontario L4W2R4

P: (905) 564-6446

F: (905) 238-1491

www.somfypro.com

A BRAND OF **SOMFY** GROUP

