

INTEGRATION GUIDE



ELAN[®]

INTEGRATION for TAHOMA[®] RTS



somfy[®]

TABLE OF CONTENTS

I.	INTRODUCTION	3
II.	OVERVIEW	4
	DESCRIPTION	
	RESOURCES & APPLICATIONS	
	SYSTEM REQUIREMENTS	
III.	INSTALLATION	5
	CONNECTIONS & INDICATORS	
IV.	SETUP	6
	SYSTEM CONFIGURATION	
	DOWNLOAD DRIVER	
	IMPORT TAHOMA DRIVER	
	ADD INTERFACE DRIVER	
	NETWORK SETUP	
	DEVICE TEST	
	APPENDIX	9
	A. ENABLE/REFRESH THIRD-PARTY INTEGRATION	
	B. AVAILABLE COMMANDS & ACTIONS	

I. INTRODUCTION

The Somfy Organization strength has been demonstrated with 50 years of experience in motorization. As leaders in the shading industry with innovation and modern solutions for homes and commercial buildings, Somfy offers the widest range of strong, quiet motors and controls for all types of applications and technologies.

Who is this Guide for?

This guide is aimed at providing support and guidance to ELAN Integrators, achieving complete automation of Radio Technology Somfy® (RTS) motors and TaHoma® Smartphone and Tablet Interface.

What does this Guide contain?

The sections of this guide contain walkthroughs and methods of controlling RTS motors using the TaHoma® Smartphone and Tablet Interface as the bridge between the AV System and Smart Shading by Somfy.

This guide discusses the method of integration with ELAN®.

For questions or assistance please contact technical support:

(800) 22-SOMFY (76639)

technicalsupport_us@somfy.com

How should this Guide be used?

This guide is intended to be used as a reference manual.

I. OVERVIEW

DESCRIPTION

The Somfy TaHoma® Smartphone and Tablet Interface provides a single platform for Somfy RTS and future ecosystems with a wide range of interior and exterior applications.

- The TaHoma® Interface supports up to 40 RTS channels
- Install up to 10 interfaces as zone controllers to increase the RTS range
- The TaHoma® can support a maximum of 40 scenes with schedules per install

Each TaHoma Interface is connected to Wi-Fi or directly to the local area network by an optional Ethernet Adaptor for IP Integration with third-party control systems. TaHoma® is compatible with the Somfy Synergy™ API.

Details of this controller and commissioning instructions are available in the Somfy TaHoma Smartphone and Tablet Interface Programming Guide.

RESOURCES & APPLICATIONS

Visit www.somfypro.com for the following guides:

- [Somfy TaHoma Smartphone and Tablet Interface Programming Guide](#)
- [Somfy RTS Pocket Programming Guide](#)

Subscribe to the Somfy YouTube Channel www.youtube.com/somfysystems

Visit the Google Play or iOS App Store for the Somfy TaHoma North America App:



Google Play Store



iOS App Store

SYSTEM REQUIREMENTS

- PC running Windows 10 or higher
- ELAN Management Cloud v1.3.0 or higher
- ELAN Core Module 8.3.11 or higher

III. INSTALLATION

CONNECTIONS & INDICATORS

REAR



Configuration Button
Press to enter Wi-Fi Mode for setup

Micro USB Port
Connect power or Ethernet Adaptor

PLUG-IN POWER SUPPLY REQUIRED (Included with TaHoma Interface)

Connect to line-voltage to power TaHoma Interface

Power Supply
Plug-in Transformer to line-voltage outlet

Micro USB
Connect power to TaHoma Interface

Standard USB
Connect cable to Transformer



FRONT



LED BEHAVIOR:

BLUE

DIRECTLY CONNECTED
Wi-Fi MODE

RED

POWERED,
NOT CONNECTED
TO CLOUD SERVER

ORANGE
STARTING UP

GREEN

CONNECTED TO NETWORK

TaHoma® Ethernet Adaptor #1870470 (Sold Separately)

Connect for a wired local area network connection

Micro USB
Connect to TaHoma Interface for power and Ethernet

Ethernet Port
Connect to network router or switch

Micro USB Port
Connect power through Ethernet Adaptor

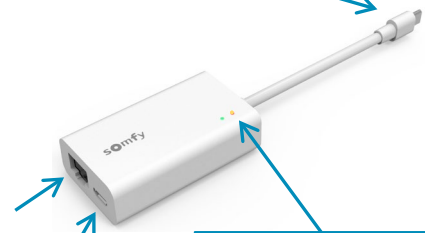
LED BEHAVIOR:

GREEN

ETHERNET CONNECTION

YELLOW

DATA TRANSFER



III. SETUP

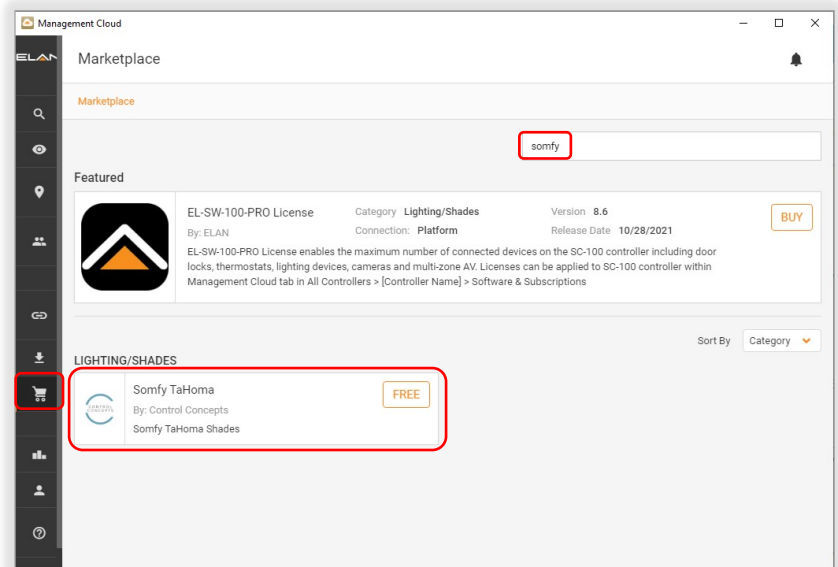
SYSTEM CONFIGURATION

A fully operational TaHoma system is required prior to ELAN programming. The TaHoma Interface supports up to 40 channels of RTS. RTS devices programmed to an RTS channel will only receive commands from the associated TaHoma Interface. Interfaces must be placed within 25-35' of the RTS devices they control.

- Confirm with the Shade Commissioning Agent that the TaHoma Interface firmware is up to date
- An Integration Report is generated in the TaHoma App which will include the TaHoma Interface PIN and IP address
 - Third-Party Integration must first be enabled in the TaHoma App (see Appendix A)

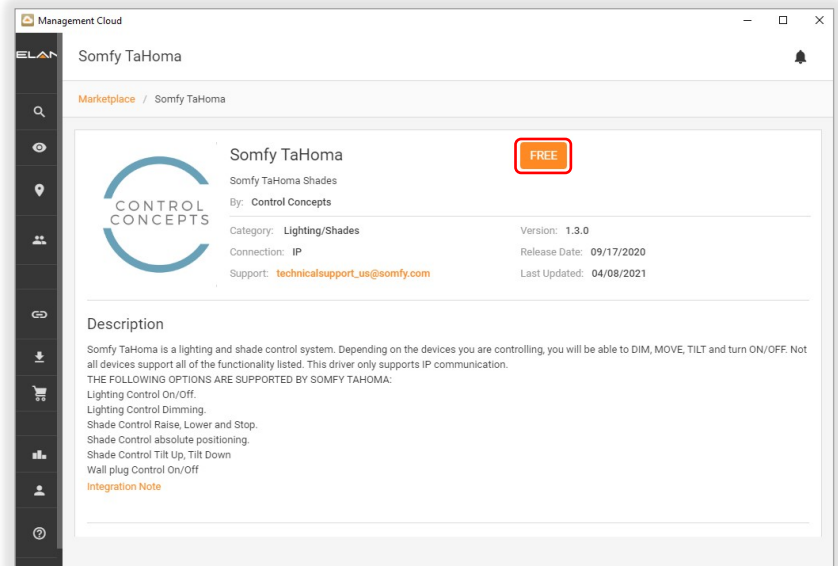
DOWNLOAD DRIVER

- 1) Launch Management Cloud program
- 2) SELECT "Cart" icon
- 3) TYPE "Somfy" into the Search field
- 4) SELECT "Somfy TaHoma"
- 5) SELECT "FREE"



- 6) SELECT "FREE"

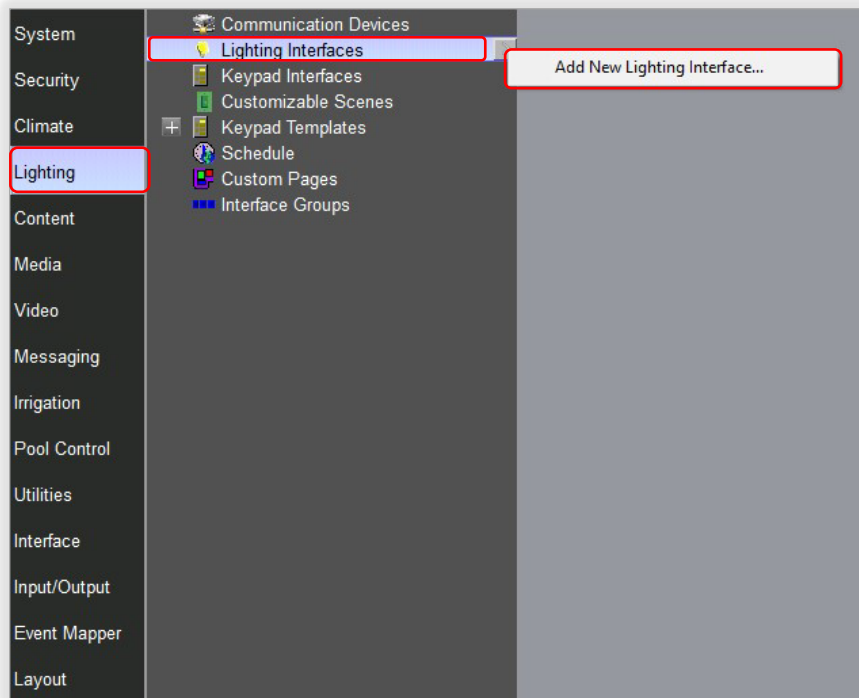
Download will begin using the default web browser



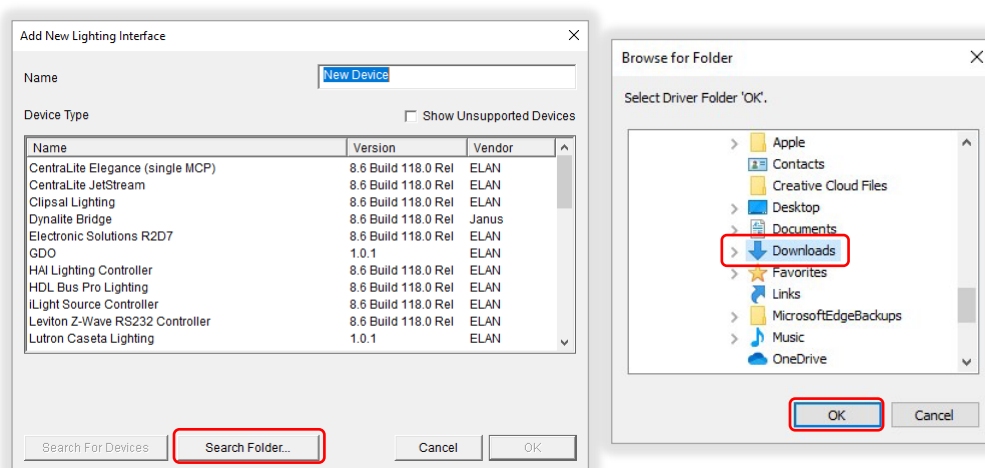
IMPORT TAHOMA DRIVER

Import the latest TaHoma driver from the ELAN Marketplace. This step is required to be performed only once.

- 1) LAUNCH ELAN Configurator
- 2) SELECT "Lighting" from the side menu bar
- 3) SELECT the arrow next to "Lighting Interface" or right click "Lighting Interface"
- 4) SELECT "Add New Lighting Interface"



- 4) SELECT "Search Folder"
- 5) SELECT the location of the driver
- 6) SELECT "OK"



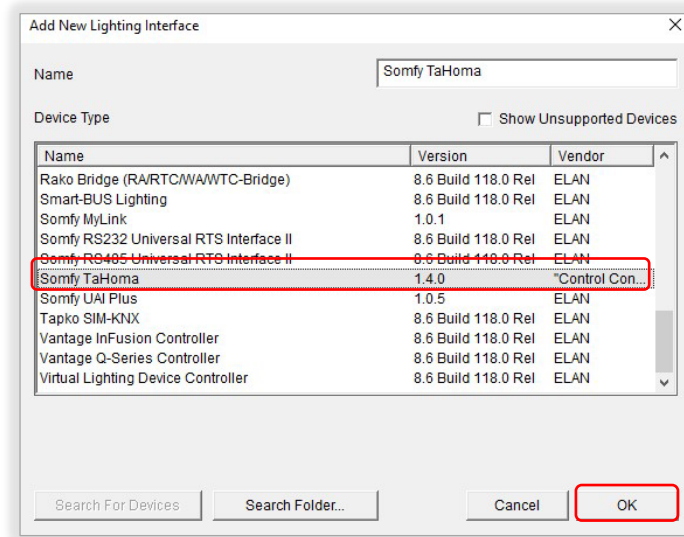
The TaHoma driver is now imported.

ADD INTERFACE DRIVER

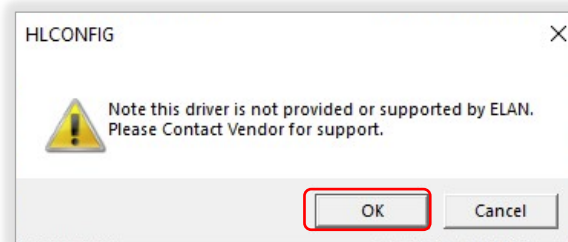
A fully operational TaHoma system is required prior to ELAN programming.
For Multiple TaHoma installations, repeat steps 1-3 for each additional TaHoma Interface.

After importing the driver, complete the following:

- 1) TYPE "Somfy TaHoma" in the Search field or scroll down and SELECT "Somfy TaHoma" from Device Type list
- 2) SELECT "OK"



- 3) SELECT "OK"

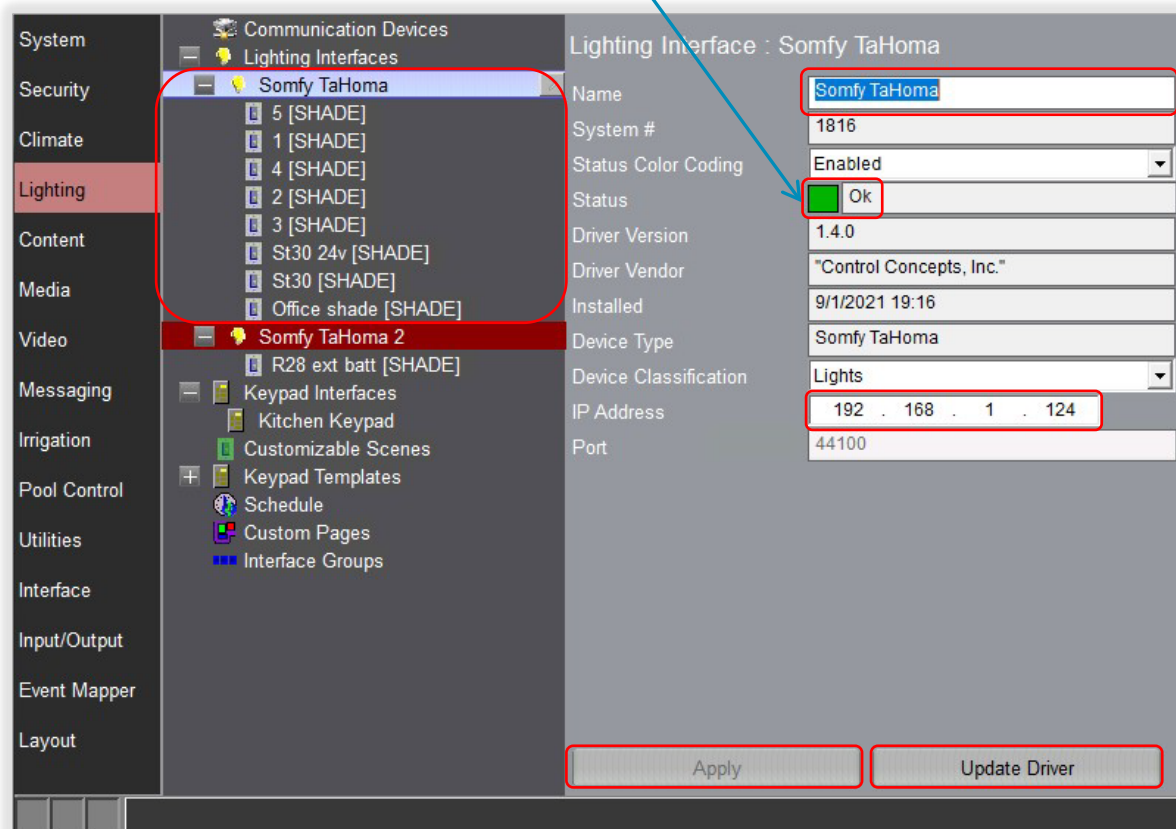


NETWORK SETUP

Third-Party Integration must be enabled in the TaHoma App. Reference the Integration Report for the TaHoma Interface IP address. Ensure that a DHCP Reservation via MAC Address of the TaHoma Interface is being used. Shades will auto-populate when communication is established.

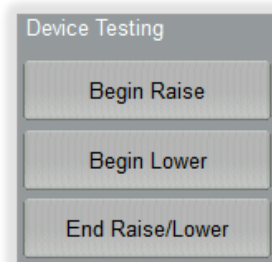
- 1) NAME the Somfy TaHoma Driver
- 2) ENTER the IP Address of the TaHoma in the IP Address field
- 3) SELECT "Apply"
- 4) ENABLE/REFRESH in the Third-Party Integration section on the TaHoma App (see APPENDIX A)
- 5) SELECT "Update Driver" in the ELAN Configurator

The Status section will change to **GREEN** when communication is successfully established.



DEVICE TEST

- 1) SELECT an RTS Application
- 2) SELECT any of the three commands under Device Testing

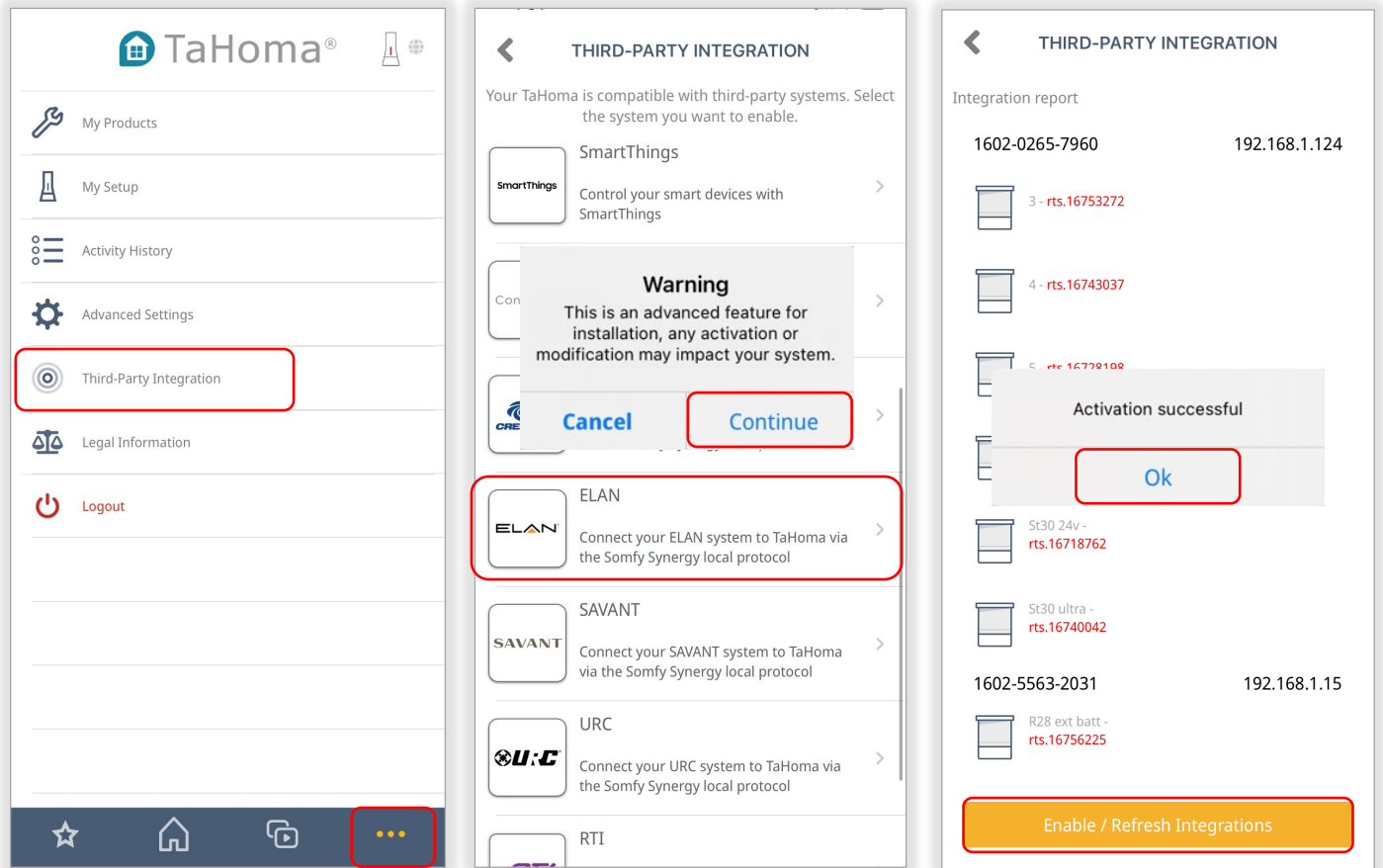


See Appendix B of this guide for a list of Somfy TaHoma specific commands and actions. RTS motors do not report positional feedback. RTS motors are capable of one programmable "My" or favorite position that requires an End Raise/Lower command when the motor is at rest.

APPENDIX

[APPENDIX A] ENABLE / REFRESH THIRD - PARTY INTEGRATION

- 1) OPEN the TaHoma North America App
- 2) SELECT the "Menu" icon in the bottom bar
- 3) SELECT "Third-Party Integration"
- 4) SELECT "ELAN" to view the Integration Report
- 5) SELECT "Continue" at the Warning
- 6) SELECT "Enable/Refresh Integrations"
- 7) SELECT "OK"



[APPENDIX B] AVAILABLE COMMANDS & ACTIONS

TAHOMA RTS COMMANDS	
Begin Raise	Moves blind to the fully open position
Begin Lower	Moves blind to the fully closed position
End Raise/Lower	Stops blind movement or moves blind to the programmed "my" position if the blind is at rest

ABOUT SOMFY

SOMFY® has been improving everyday life for more than 270 million people by designing and manufacturing intelligent motorization solutions for interior window coverings and exterior solar protections. Somfy innovates to automate and connect shades, blinds, draperies, awnings, rolling shutters, exterior screens & pergolas for commercial and residential buildings in 58 countries across the globe. With 170+ million motors produced over the last half century, Somfy is committed to creating reliable and sustainable solutions that promote the best way of living and well-being for all.

FOR QUESTIONS OR ASSISTANCE PLEASE CONTACT TECHNICAL SUPPORT:

(800) 22-SOMFY (76639)

technicalsupport_us@somfy.com

SOMFY SYSTEMS INC

SOMFY NORTH AMERICAN HEADQUARTERS

121 Herrod Blvd.

Dayton, NJ 08810

P: (609) 395-1300

F: (609) 395-1776

FLORIDA

1200 SW 35th Ave.

Boynton Beach, FL 33426

F: (561) 995-7502

CALIFORNIA

15301 Barranca Parkway

Irvine, CA 92618-2201

F: (949) 727-3775

SOMFY ULC

SOMFY Canada Division

5178 Everest Drive

Mississauga, Ontario L4W2R4

P: (905) 564-6446

F: (905) 238-1491

www.somfypro.com

A BRAND OF **SOMFY** GROUP

