

PROGRAMMING GUIDE
INSTALLER VERSION



SOMFY
SET & GO[®] CONNECT



PROGRAMMING GUIDE

SOMFY SET & GO[®] CONNECT

VERSION 1.0 | MAY 2022 | Prepared by PROJECT SERVICES

TABLE OF CONTENTS

I.	INTRODUCTION	4
II.	OVERVIEW	5
	DESCRIPTION	
	RESOURCES & APPLICATIONS	
	SMART PHONE OR TABLET REQUIREMENTS	
	MOBILE DEVICE CONFIGURATION	
III.	INSTALLATION	6
	CONNECTIONS & INDICATORS	
	POWER	
	PLACEMENT	
IV.	SET UP	10
	PROFILE SELECTION	
	APPLICATION SETTINGS	
V.	COMMISSIONING	12
	CONFIGURE TAHOMA	
	ADD A SOMFY SMART PLUG	
	ADD A DRAPERIE MOTOR	
	SET DRAPERIE MOTOR LIMITS	
	SET DRAPERIE MOTOR "my" POSITION	
	ADJUST ADVANCED SETTINGS	
	NAME AND TEST THE DEVICE	
	ADD A TUBULAR ZIGBEE MOTOR	
	SET TUBULAR MOTOR LIMITS	
	SET TUBULAR MOTOR "my" POSITION	
	ADJUST ADVANCED SETTINGS	
	NAME AND TEST THE DEVICE	
	ADD A ZIGBEE REMOTE	
	PAIR A ZIGBEE REMOTE	
	ADD AN RTS PRODUCT	
	FINISH INSTALLATION	

TABLE OF CONTENTS

APPENDIX -----40

- A. AVAILABLE COMMANDS & ACTIONS
- B. UNABLE TO READ QR CODE
- C. MISSING QR CODE
- D. MOTOR FIRMWARE UPDATE
- E. ZIGBEE GROUPS
- F. TEST A PRODUCT
- G. EDIT OR DELETE A PRODUCT
- H. MOTOR CONFIGURATION ERROR

I. INTRODUCTION

The Somfy Organization strength has been demonstrated with 50 years of experience in motorization. As leaders in the shading industry with innovation and modernization solutions for homes and commercial buildings, Somfy offers the widest range of strong, quiet motors and controls for all types of applications and technologies.

Who is this Guide for?

This guide is aimed at providing support and guidance to installers for achieving motor setting and programming Zigbee motors prior to installing the TaHoma® Smartphone and Tablet Interface.

What does this Guide contain?

The sections of this guide contain walkthroughs and methods of programming Zigbee and adding RTS motors using the Somfy Set & Go® Connect App between the TaHoma system and Smart Shading by Somfy.

This guide discusses the programming of motors with Somfy Set & Go Connect.

For questions or assistance please contact technical support:

(800) 22-SOMFY (76639)

technicalsupport_us@somfy.com

How should this Guide be used?

This guide is intended to be used as a reference manual.

II. OVERVIEW

DESCRIPTION

Set & Go® Connect is a mobile app dedicated to professionals. Use this quick, simple, and intuitive app to set up and connect Somfy-powered smart shading solutions with Zigbee and RTS technology.

The installer profile consists of configuring the TaHoma and its Zigbee network by adding devices, creating groups, and binding remotes to motors via a mobile device within the project.

RESOURCES & APPLICATIONS

Visit www.somfypro.com for the following guides:

- [Somfy TaHoma Smartphone and Tablet Interface Programming Guide](#)
- [Somfy RTS Pocket Programming Guide](#)

Subscribe to the Somfy YouTube Channel www.youtube.com/somfysystems

Visit Somfy U for all the training you need – your pace, your place www.somfyu.com

Visit the Google Play or iOS App Store for the Somfy Set & Go Connect app:



[Google Play Store](#)



[iOS App Store](#)

SMART PHONE OR TABLET REQUIREMENTS

The Set & Go Connect app is compatible with the following operating systems and software versions:

iOS 11.0+

Android 7.0+

Ensure the app is up to date for the mobile or tablet device

MOBILE DEVICE CONFIGURATION

- Bluetooth must be enabled on mobile device
- Must allow permission for camera, local network, location, and cellular data

III. INSTALLATION

CONNECTIONS & INDICATORS

Zigbee Coordinator (ZC)

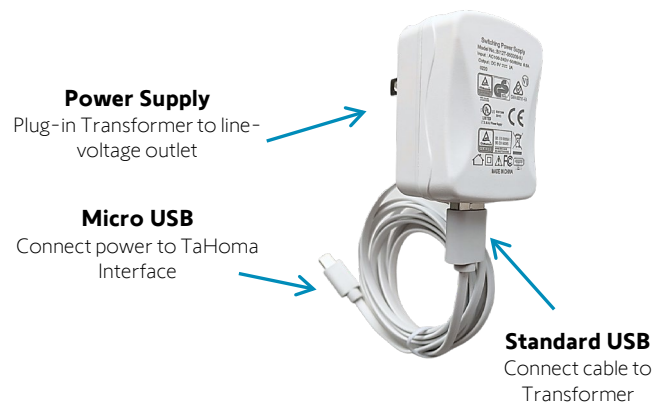
TaHoma® RTS/Zigbee Smartphone and Tablet Interface #1811731 (With base stand included with TaHoma Interface)

REAR

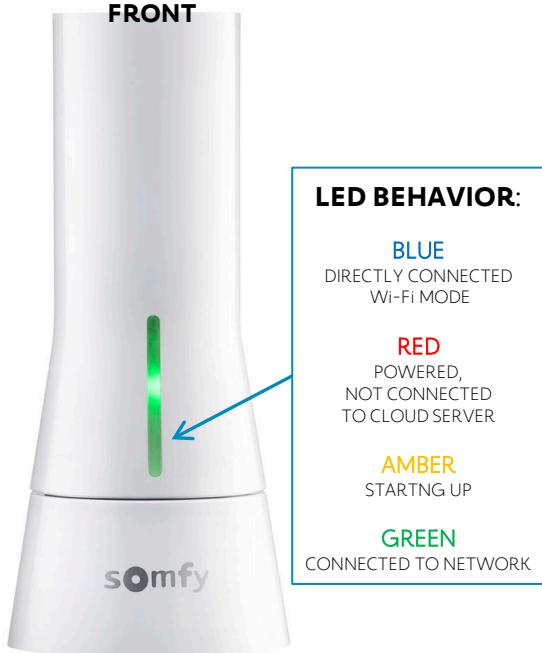


PLUG-IN POWER SUPPLY REQUIRED (Included with TaHoma Interface)

Connect to line-voltage to power TaHoma Interface

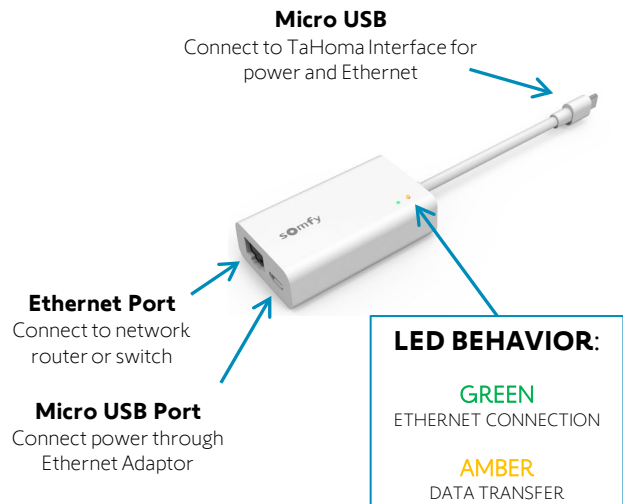


FRONT



TaHoma® Ethernet Adaptor #1870470 (Sold Separately)

Connect for a wired local area network connection



Zigbee Routers (ZR)

SOMFY ZIGBEE SMART PLUG & REPEATER #1800127

Ensure the Smart Plug is plugged into a properly powered outlet.
PRESS & HOLD the LED button while installing in an outlet to pair to TaHoma system.



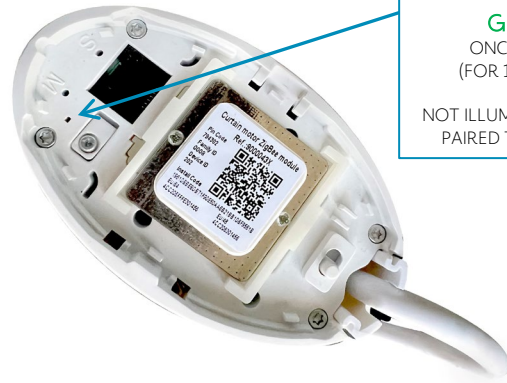
LED BEHAVIOR:

RED
POWERED,
OUTPUT OFF

GREEN
OUTPUT ON,
POWERING DEVICES

DRAPERY MOTOR

Ensure the motor has proper power.
Use the Set & Go® Connect or TaHoma App to SCAN the QR code of the Zigbee module to add the drapery motor into the TaHoma system.



LED BEHAVIOR:

AMBER
FLASH DURING PAIRING

GREEN
ONCE PAIRED
(FOR 1 SECOND)

NOT ILLUMINATED ONCE
PAIRED TO TAHOMA

Zigbee End Devices (ZED)

WIREFREE MOTOR

Ensure the motor has proper power.
Using a small paper clip or similar, BRIEFLY PRESS the recessed PROGRAMMING BUTTON located on the head of the motor, or plug in the battery supply/charger.

WAKING THE MOTOR:

The motor will jog (briefly move up and down), and the LED will illuminate **GREEN** for 2 seconds. The LED will blink **AMBER** continuously during the setup process.

LED BEHAVIOR:

AMBER
BLINKS IN ZIGBEE MODE

GREEN
BLINKS WHEN A COMMAND IS RECEIVED

RED
BLINKS THREE TIMES WHEN BATTERY IS LOW AND REQUIRES CHARGING



SITUO® 1 & 4 ZIGBEE REMOTES

Ensure the remote is powered. PRESS any button to illuminate the LED(s).
RED LED(s) illuminate to confirm Zigbee signal transmission.
The LED(s) will not illuminate if the battery is discharged.

LED BEHAVIOR:

RED
ILLUMINATES RED IF A COMMAND IS PRESSED ON A CHANNEL WHERE THERE ARE NO PAIRED DEVICES

RED
BLINKS IF PAIRING HAS TIMED OUT

GREEN
BLINKS WHEN CYCLING THROUGH THE CHANNELS ON A MULTI CHANNEL REMOTE

GREEN
BLINKS WHEN A ZIGBEE COMMAND IS SENT TO A PAIRED DEVICE



POWER

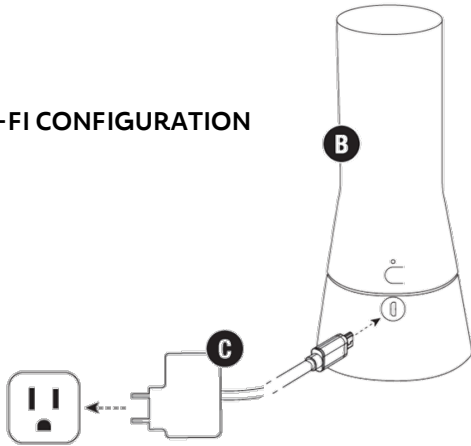
TaHoma Interface

- A Ethernet Adaptor
- 1 Yellow light indicates data transfer
- 2 Green light indicates Ethernet connection
- B TaHoma® RTS/Zigbee Smartphone & Tablet Interface
- C USB Power Supply
- D Ethernet Cable
- @ Ethernet Router or Network Switch

Ensure the Ethernet Adaptor is connected between the USB Power Supply and the TaHoma Interface prior to configuration.

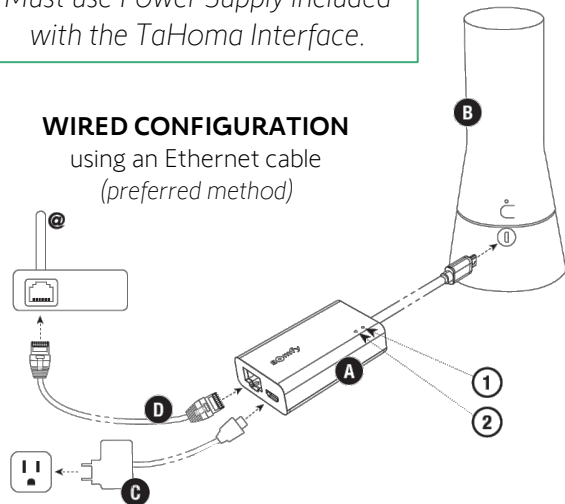
Must use Power Supply included with the TaHoma Interface.

WI-FI CONFIGURATION



WIRED CONFIGURATION

using an Ethernet cable
(preferred method)



Motors

Motor Types	Description	Products
Sonesse 40 Zigbee	The Sonesse 40 AC Zigbee motor comes standard with a 11.5 ft. integrated power cable. Apply 120V 60Hz power, based on local codes, to the motor before proceeding.	<p>The diagram shows a cross-section of the motor's power cable with three wires: Ground (green), Neutral (white), and Line (black). The motor is shown in two views: one with the cable attached and one without.</p>
Drapery Zigbee	The Glydea® Ultra 35 & 60 Zigbee come with a 10 ft. cable with molded NEMA 5-15 plug that can be plugged into a 120V outlet.	<p>The diagram shows a long, thin motor with a NEMA 5-15 plug at one end. The plug is shown inserted into a standard 120V wall outlet. A smartphone is shown nearby with wireless signals, indicating Zigbee connectivity.</p>
WireFree Zigbee	<p>Lithium-Ion(Li-Ion) motors External power supply is required to charge the battery. Batteries are embedded in the body of the motors. All batteries must be charged prior to installation.</p> <p>External battery motors External power source, such as an Li-Ion external battery pack, or a plug-in power supply, is required.</p>	<p>The diagram shows a long, thin motor and a separate power supply unit with a plug-in cord. A small circular component, likely a battery pack, is also shown.</p>

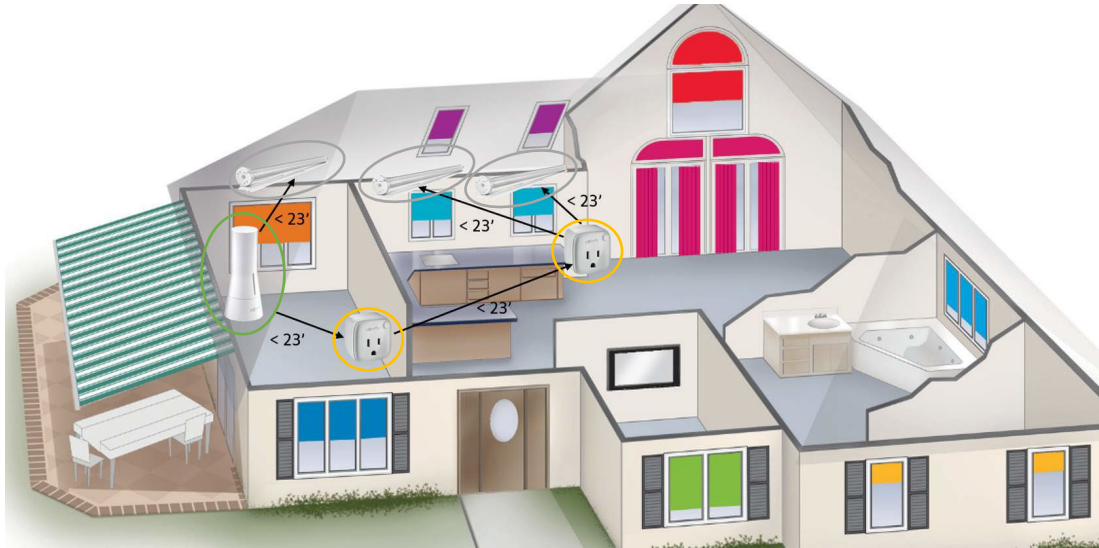
PLACEMENT

ZIGBEE

Place the TaHoma using the following criteria for Zigbee:

- Whole House Control with one TaHoma
- Stay within 23 feet between Zigbee devices for best performance
- Powered devices are Zigbee routers extending mesh network radio range
- For every 6 WireFree Zigbee motors, add a Smart Plug
- Be sure that plug-in Zigbee devices are using powered outlets

Refer to the Programming Guide for TaHoma Zigbee & RTS for additional details.

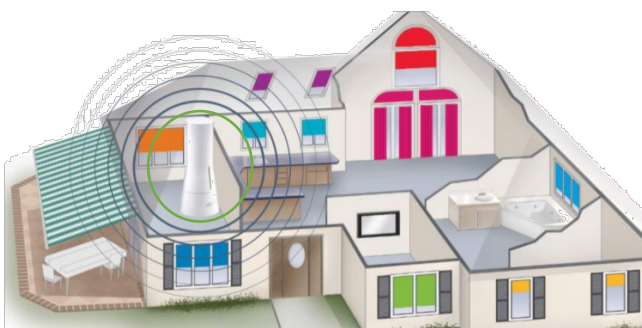


WHOLE HOUSE CONTROL

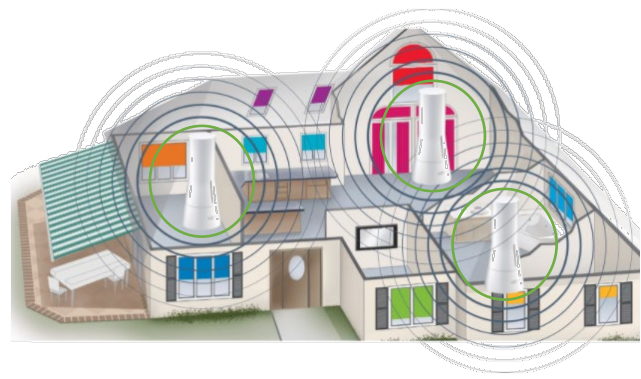
RTS

Place the TaHoma using the following criteria when installing one or more Interfaces:

- Single Zone control (Room Control)
- Whole House Control (up to 10 TaHoma Interfaces)
- Stay within 25-35 feet of the RTS motors for best performance



SINGLE ROOM CONTROL



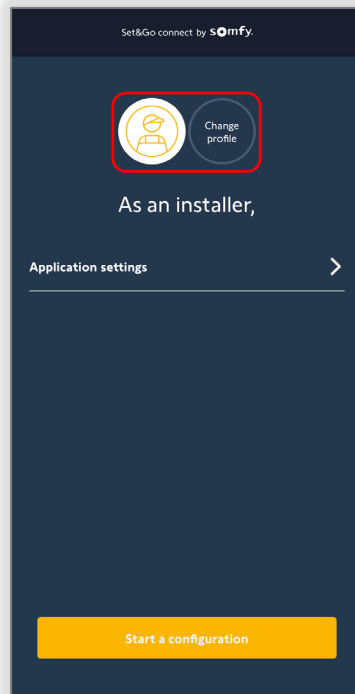
WHOLE HOUSE CONTROL

IV. SET UP

PROFILE SELECTION

When launching the app for the first time, begin from step 2.
To set the profile to Installer, follow the steps below.

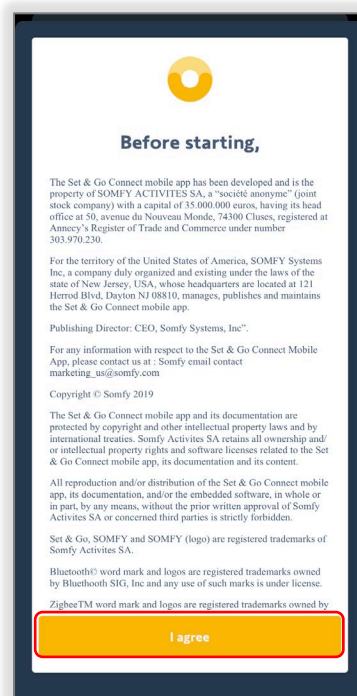
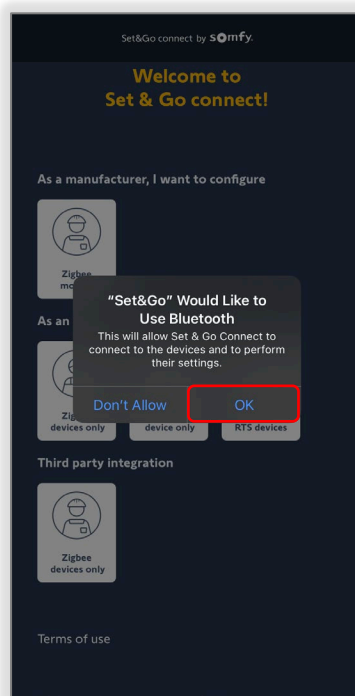
1. SELECT "Change profile"
2. In the Installer section, SELECT one of the following:
 - "Zigbee devices only"
 - "RTS devices only "
 - "Zigbee & RTS devices"



3. SELECT "OK" to enable Bluetooth
NOTE: Stay within 10 feet for Bluetooth range.
4. SELECT "I agree"
NOTE: This will only be required to do once for first time users.

To start configuration, go to the [Configure TaHoma section](#).

To change a Zigbee channel or to do maintenance on a Zigbee motor, go to the [next page](#).



APPLICATION SETTINGS

To set the Zigbee channel or to perform motor maintenance, follow the steps below.

1. SELECT "Application settings"

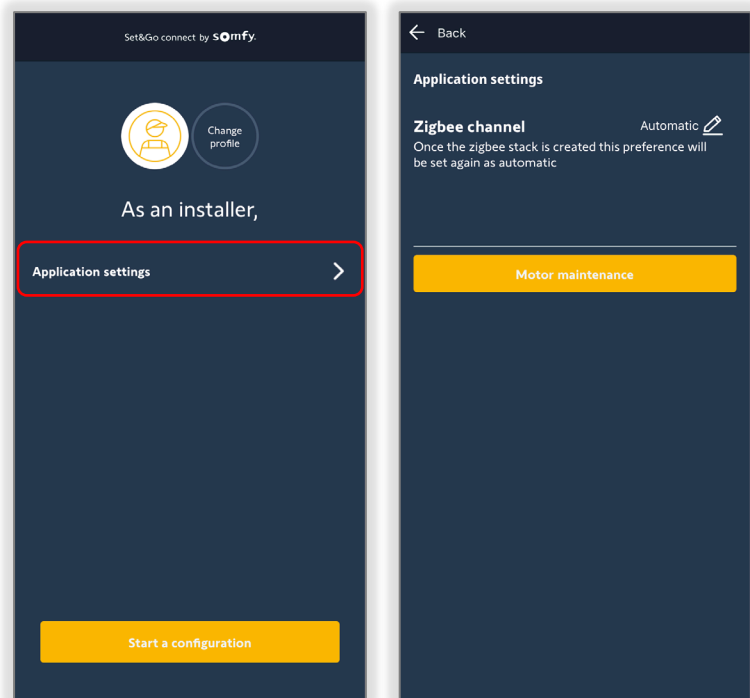
- **Zigbee channel**— Default is automatic (recommended)

NOTE: Zigbee channel cannot be changed after devices are added. To change the Zigbee channel, the Zigbee network needs to be destroyed, and the pairing process must be repeated.

- **Motor maintenance**— Allows connection to a Zigbee motor directly by scanning the QR code to make the following adjustments without the need to connect to the TaHoma Interface:

- Adjust the motor limits
- Change rotation direction
- Set a "my" position
- Adjust Advance settings
- Rename the motor

NOTE: Motors must be in Bluetooth mode. Stay within 10 feet for Bluetooth range.



V. COMMISSIONING

CONFIGURE TAHOMA

To configure TaHoma, follow the steps below.

For multiple TaHoma installations, each TaHoma must be configured individually (RTS only).

To connect the TaHoma via Ethernet, ensure that the Ethernet Adaptor is plugged in with the power cable connected.

1. ENSURE Installer Profile is selected, [see Profile Selection in the Set Up Section](#)
2. SELECT "Start a configuration"
3. FOLLOW the on-screen instructions:
 - Unplug the ethernet cable from the Ethernet Adaptor (sold separately)
 - Power up the TaHoma and wait for a **RED** LED
 - PRESS & HOLD the configuration button on the back of the TaHoma until the LED turns **BLUE**
4. SELECT "Next step"
5. SCAN the QR code on the base of the TaHoma

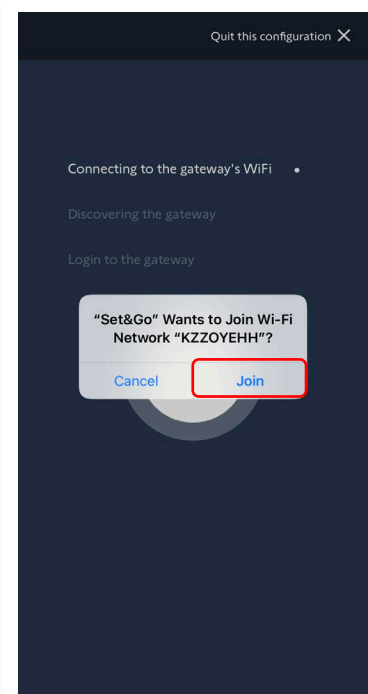
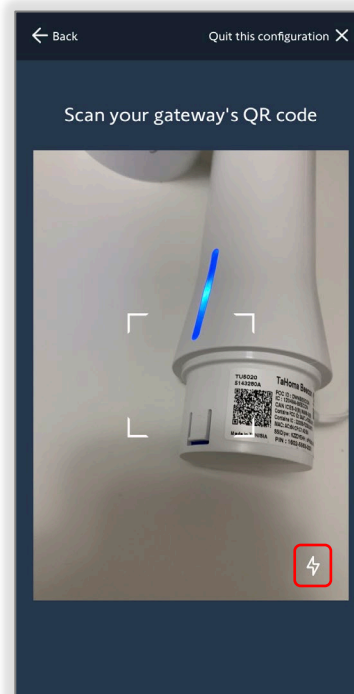
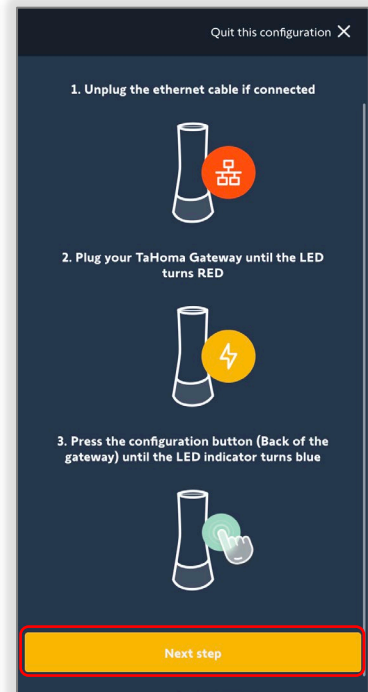
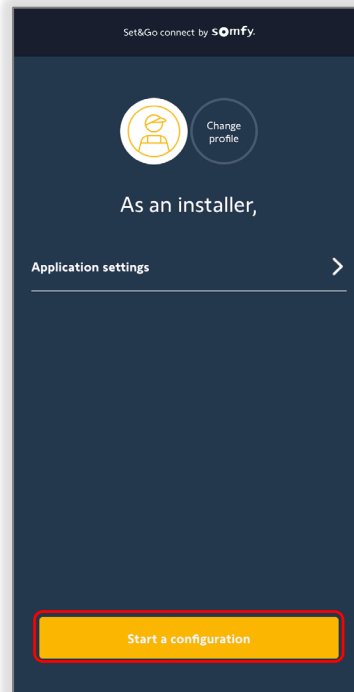
NOTE: Best practice is to scan the product label instead of the box label.

For dark images, SELECT the Flash icon on the device's camera.

6. SELECT "Join" to connect to the TaHoma Wi-Fi

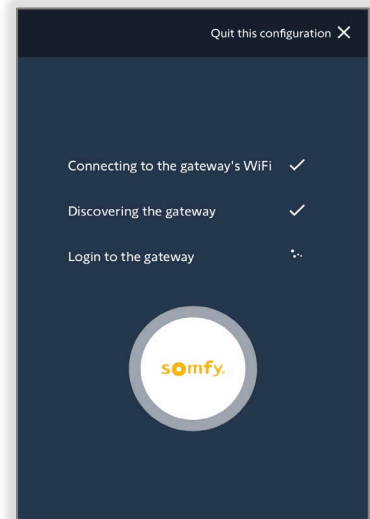
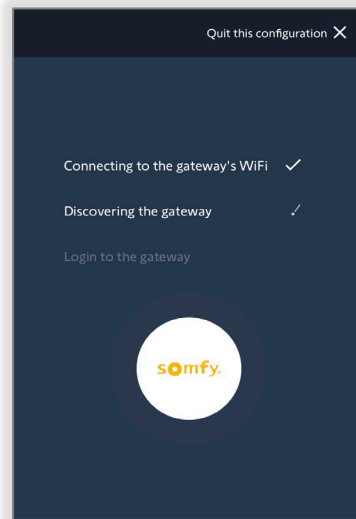
NOTE: Connection to the TaHoma Wi-Fi will be lost when phone/tablet is out of range.

While connecting to the TaHoma Wi-Fi, some mobile devices will disconnect and connect to a known Wi-Fi or LTE. A pop-up message may appear with an option to stay connected to the TaHoma Wi-Fi, SELECT the option to stay connected.

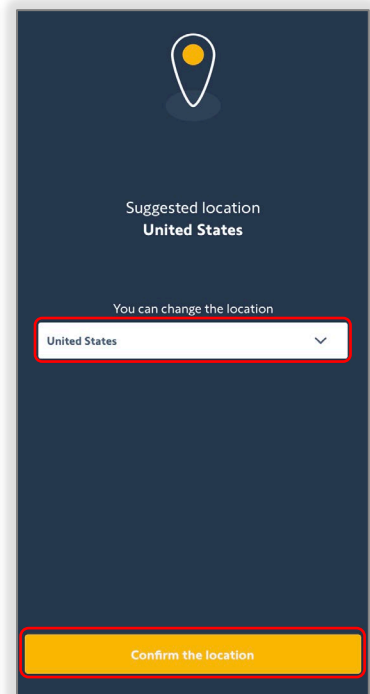
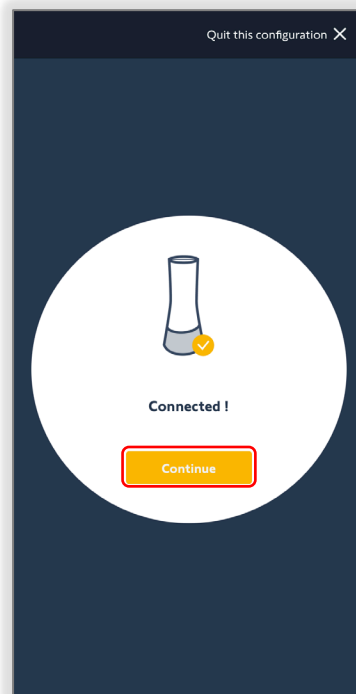


This operation may take a few minutes:

- Connecting to the gateway's Wi-Fi
- Discovering the gateway
- Login to the gateway



7. SELECT "Continue"
8. The app will suggest a location using phone/tablet location, SELECT a country from the drop-down list to change the location
9. SELECT "Confirm the location"



10. SELECT "Configuration" when ready to add devices

Zigbee Network will be created for the following Installer Profile:

- "Zigbee devices only"
- "Zigbee and RTS devices"

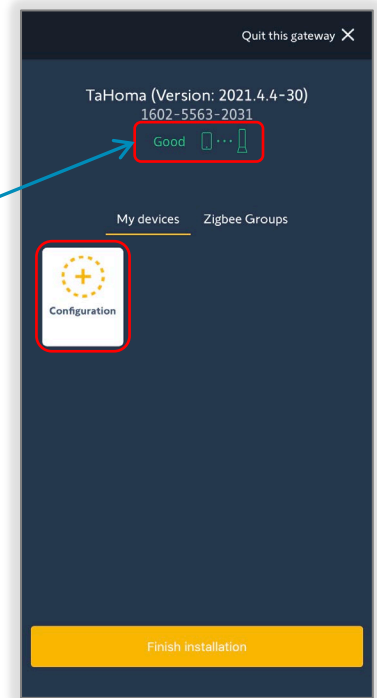
Zigbee – Refer to the following sections:

- [Add A Somfy Smart Plug](#)
- [Add A Drapery Motor](#)
- [Add A Tubular Zigbee Motor](#)
- [Add A Zigbee Remote](#)

RTS – Refer to the following section:

- [Add An RTS Product](#)

Connection strength
indication between
phone/tablet to TaHoma:
GREEN – Good
RED – Poor



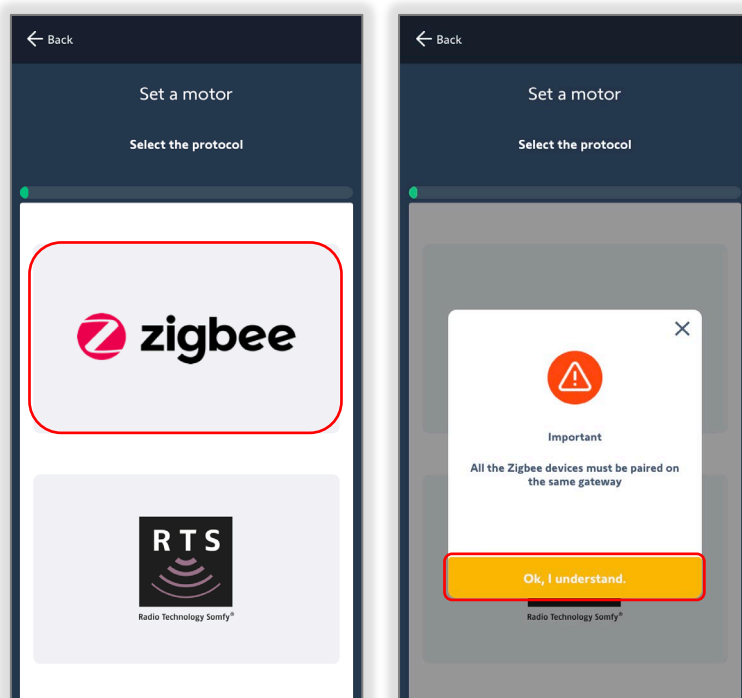
ADD A SOMFY SMART PLUG

To add a Somfy Smart Plug, follow the steps below.

1. SELECT "Zigbee" protocol

NOTE: For setting up multiple gateways in the Installer Profile – Zigbee and RTS device, all Zigbee devices must be paired on the same gateway.

2. SELECT "OK, I understand."

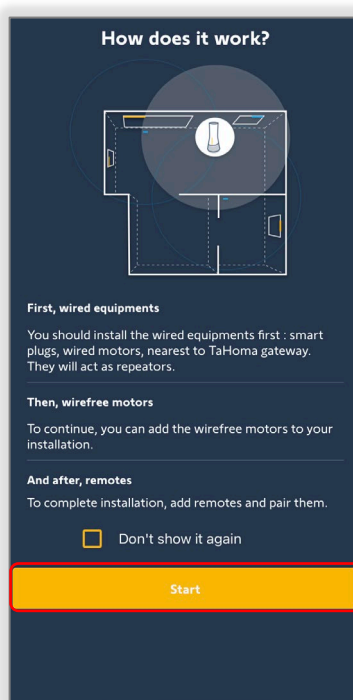


Understanding the order of installation

- Wired devices such as smart plugs and AC wired motors, which will act as repeaters
- WireFree motors
- Remote controls

NOTE: SELECT the check box to not show this tip again. To reactivate the tip, the app must be reinstalled.

3. SELECT "Start"



4. SCAN the QR code on back of the Smart Plug

NOTE: If missing the QR code or unable to scan the QR code, see [Appendix B](#)

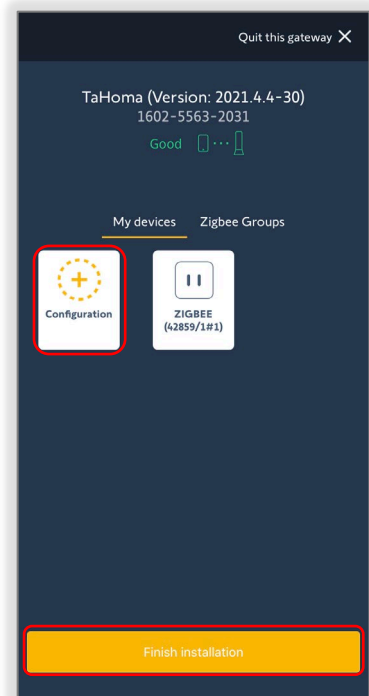
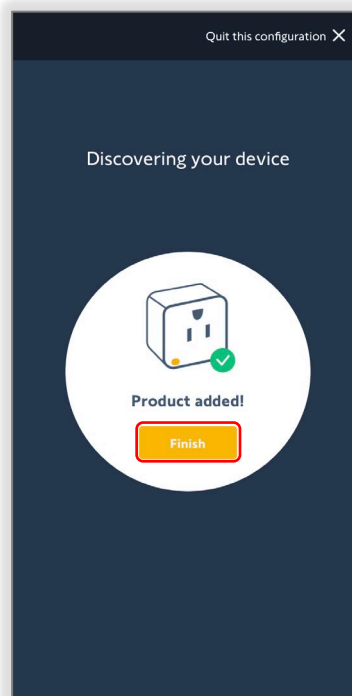
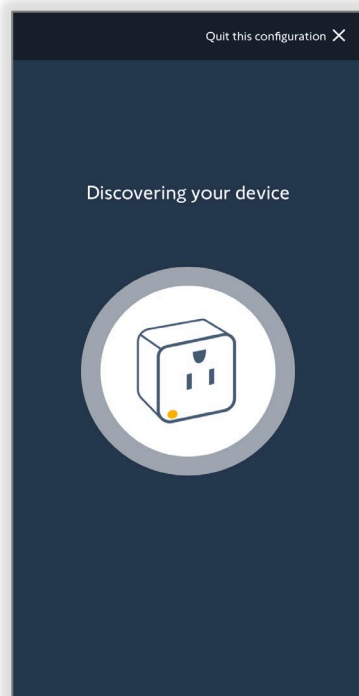
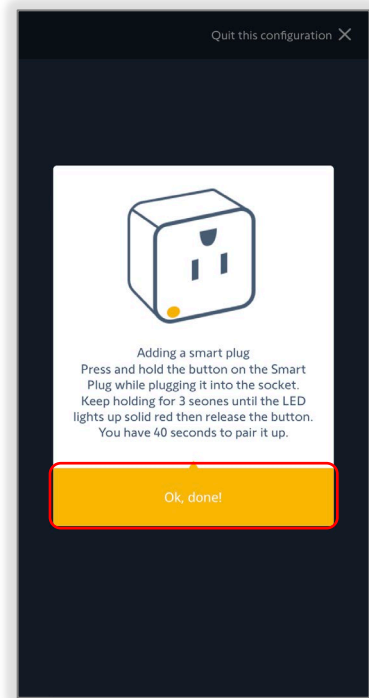
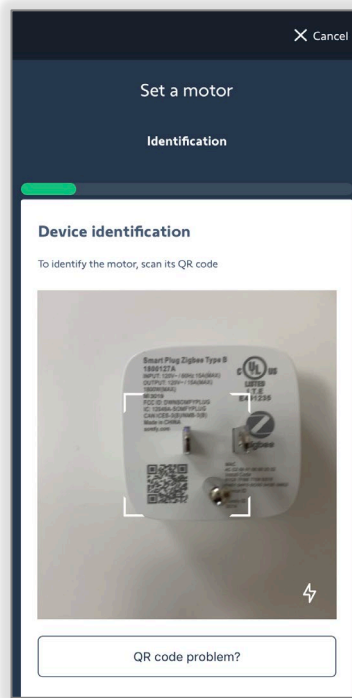
5. FOLLOW the on-screen instructions:

- PRESS & HOLD the button on the smart plug while plugging it into a socket
- Keep PRESSING until the LED illuminates solid **RED**, then RELEASE

Pairing mode will timeout in 40 seconds

6. SELECT “OK, done”

7. SELECT “Finish”



8. To add more devices, SELECT “Configuration” to repeat the process

9. To complete the installation, SELECT “Finish Installation” and refer to the [Finish Installation section](#)

To create Zigbee groups, see [Appendix E](#).

To test Zigbee products, see [Appendix F](#).

To edit or delete Zigbee products, see [Appendix G](#).

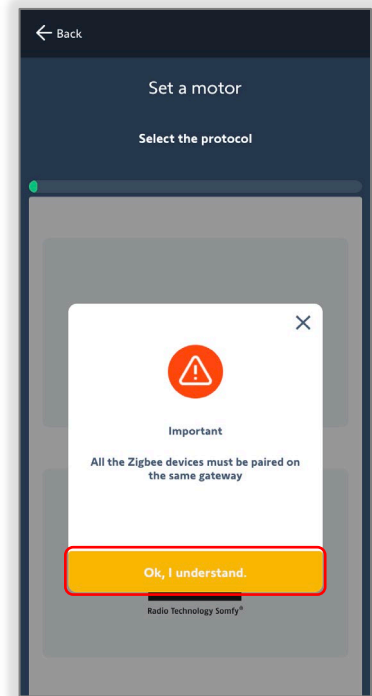
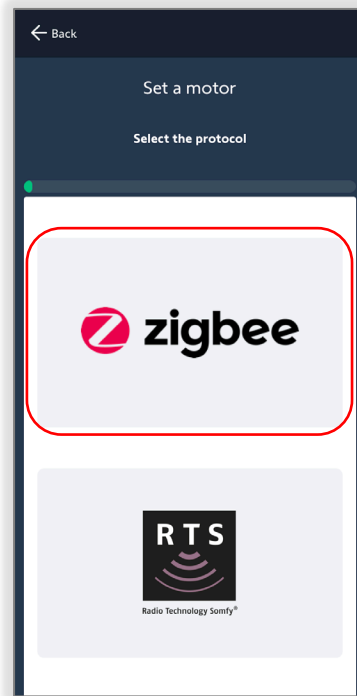
ADD A DRAPERY MOTOR

To add a drapery motor, follow the steps below.

1. SELECT "Zigbee" protocol

NOTE: For setting up multiple gateways in the Installer Profile – Zigbee and RTS device, all Zigbee devices must be paired on the same gateway.

2. SELECT "OK, I understand."

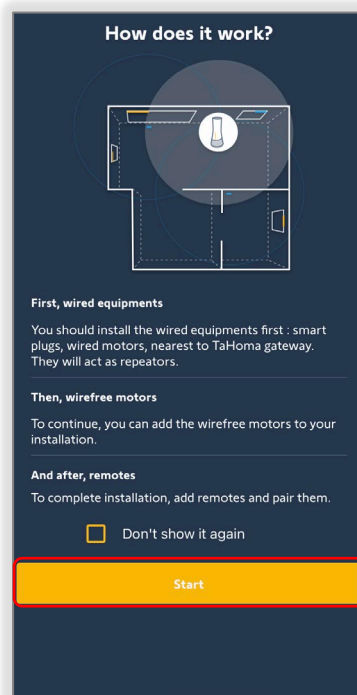


Understanding the order of installation

- Wired devices such as smart plugs and AC wired motors, which will act as repeaters
- WireFree motors
- Remote controls

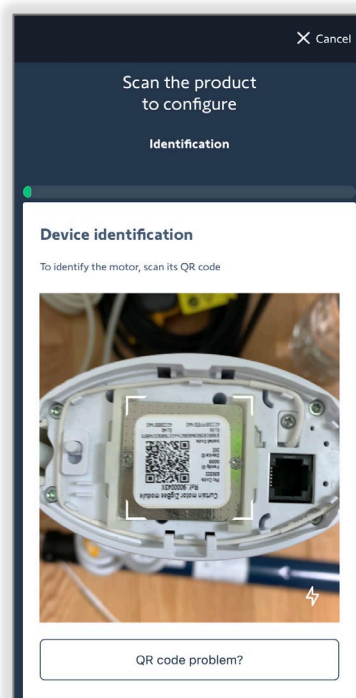
NOTE: SELECT the check box to not show this tip again. To reactivate the tip, the app must be reinstalled.

3. SELECT "Start"

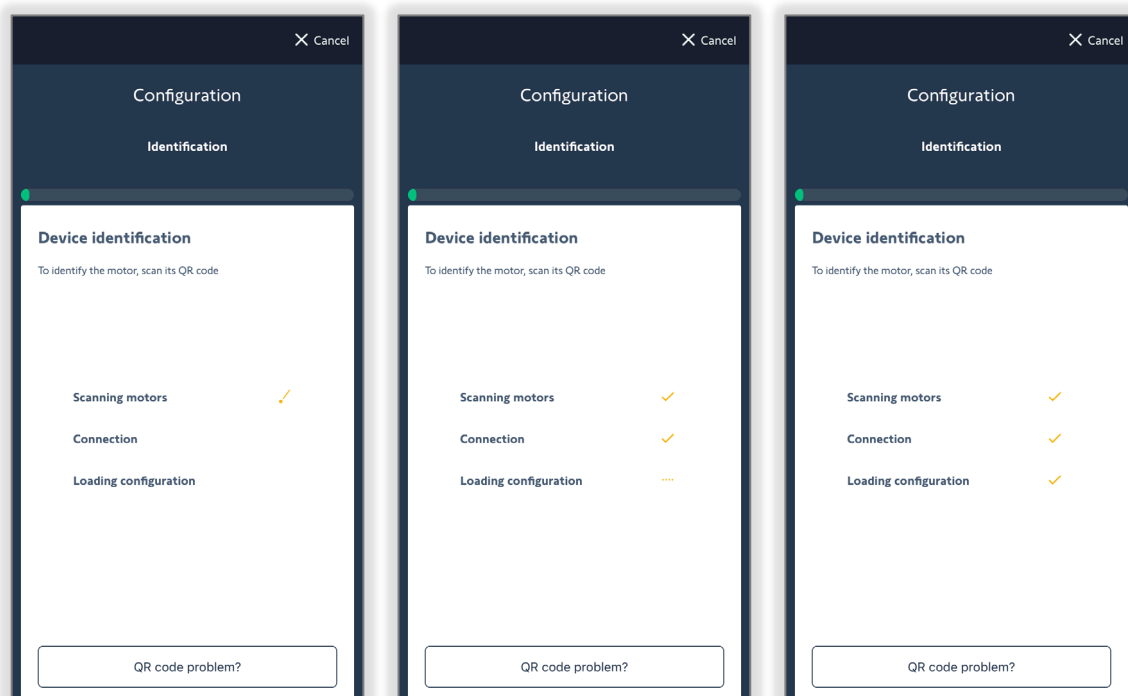


4. SCAN the motor QR code

If missing the QR code or unable to scan the QR code, see [Appendix B](#).



The app will now scan for the motor, connect to the motor and load the configuration. Once successfully connected, the motor will jog once.



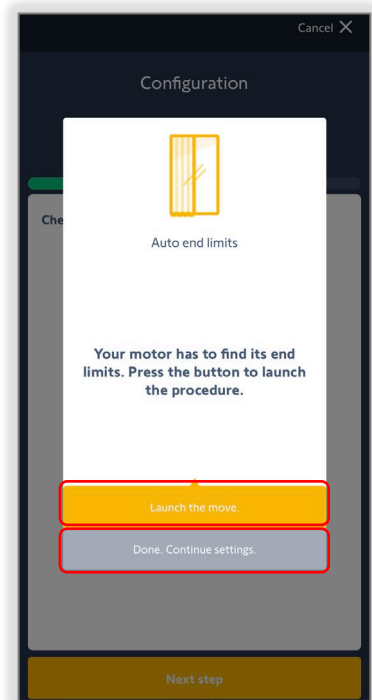
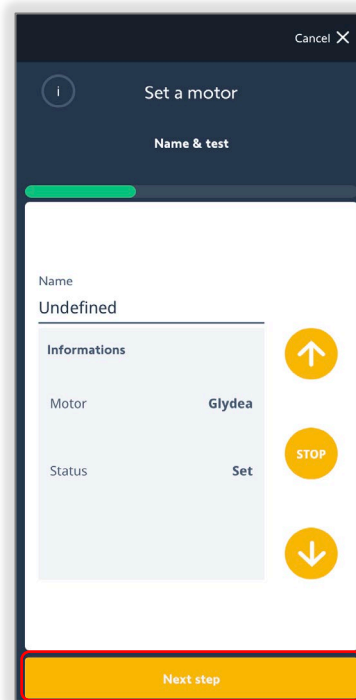
Firmware updates for Zigbee products may be required at this time; see [Appendix D](#) to update motor firmware.

SET DRAPERY MOTOR LIMITS

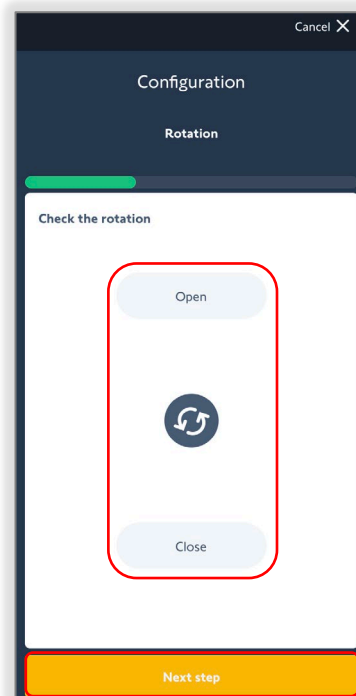
To set limits on a drapery motor, follow the steps below.

NOTE: Proceed with the following steps to continue, whether or not limits are already set.

1. SELECT "Next step"
Do not press the directional buttons at this time
Naming the motor can be done on the last step
2. SELECT "Launch the move"
The drapery motor will move to detect the end limits automatically
3. SELECT "Done. Continue settings"



4. PRESS & HOLD the "Open" or "Close" button to check the direction of the motor
To modify the rotation, SELECT the REVERSE button to jog the motor
Check the direction again using the "Open" or "Close" button
5. SELECT "Next step"

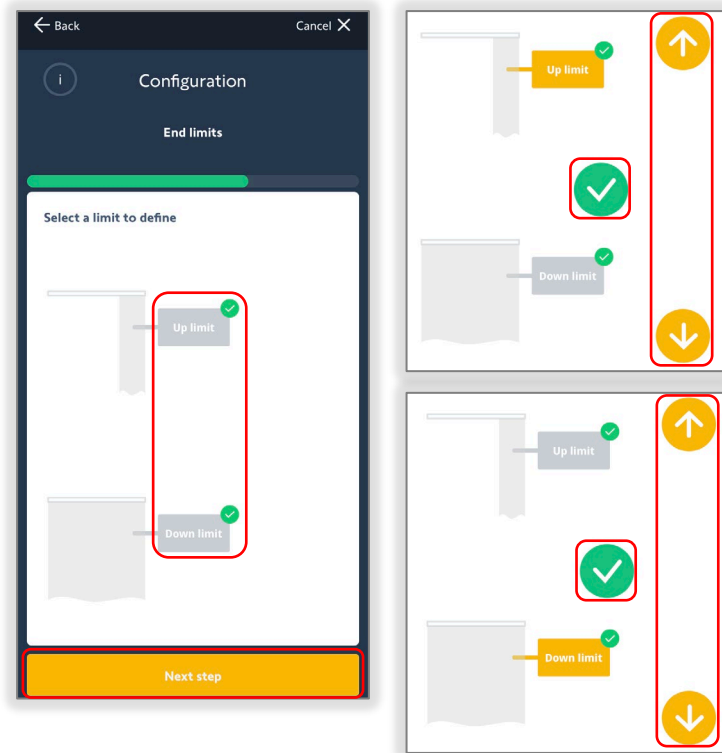


- To readjust the set limits, SELECT the "Up limit" or "Down limit" button

Use the UP or DOWN button to move the motor to the desired limit

When complete, SELECT the GREEN checkmark

- SELECT "Next step" when complete



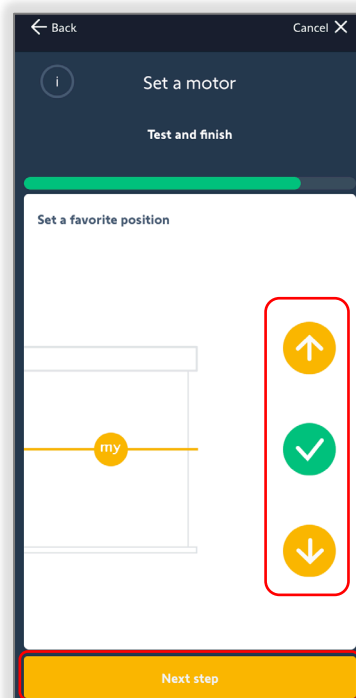
SET DRAPERY MOTOR "my" POSITION

To set the "my" position for a drapery motor, follow the steps below.

- PRESS & HOLD the UP or DOWN button to move the motor to the desired "my" position
- SELECT the GREEN checkmark to set the "my" position

The motor will jog once

- SELECT "Next step" when complete



ADJUST ADVANCED SETTINGS

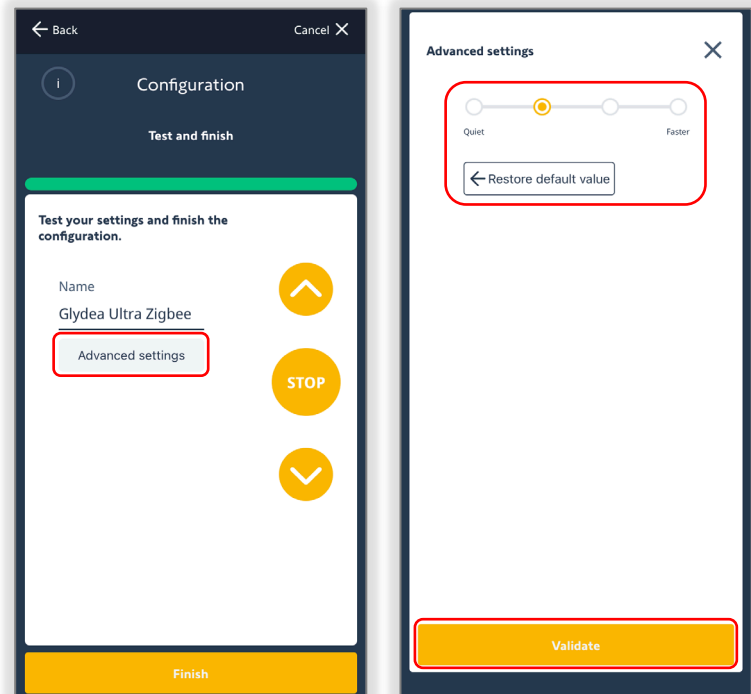
To set additional settings for a Drapery motor, follow the steps below.

1. SELECT "Advanced settings"
2. Use the slider to adjust the speed of the motor

Quiet: 4.9 inch/second
Faster: 7.86 inch/second

NOTE: Glydea® Ultra 35/60 is equipped with a speed toggle switch (Hi-speed and Silent mode) on the bottom of the motor. This switch will override any speed changes made using the Set & Go Connect app.

3. SELECT "Validate" when complete



NAME AND TEST THE DEVICE

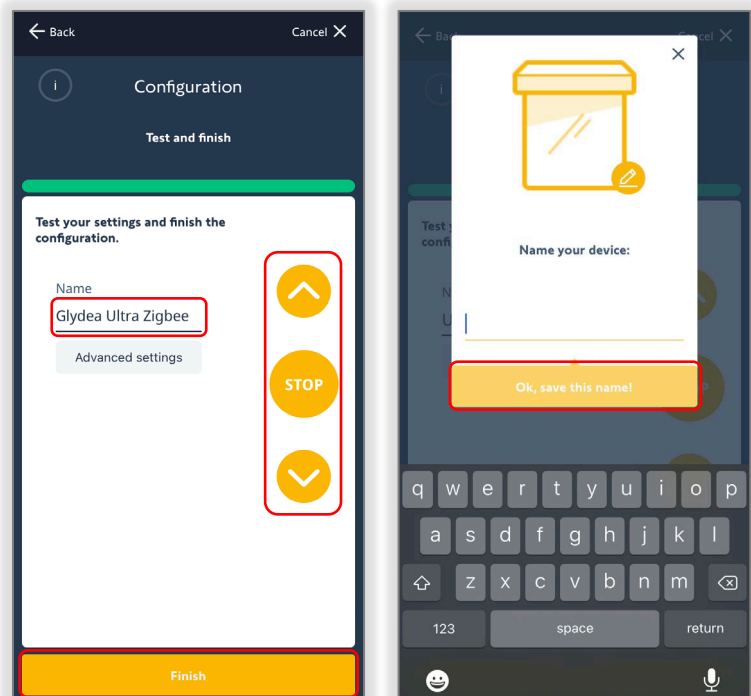
To name and test the device, follow the steps below.

Name the device:

1. SELECT the "Name" field
2. ENTER a name for the device
3. SELECT "OK, save this name!"

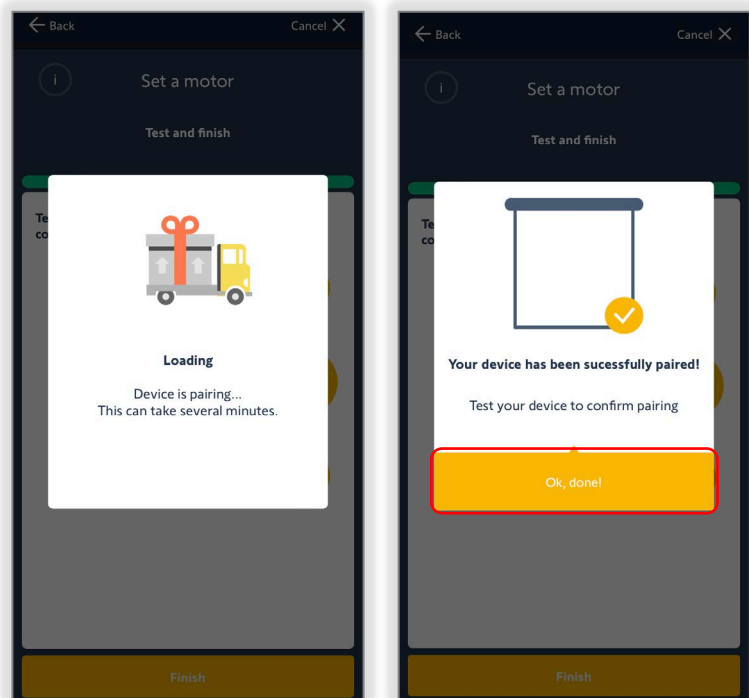
Test the device:

1. PRESS the UP, DOWN, or STOP button to test the motor
2. SELECT "Finish" when complete

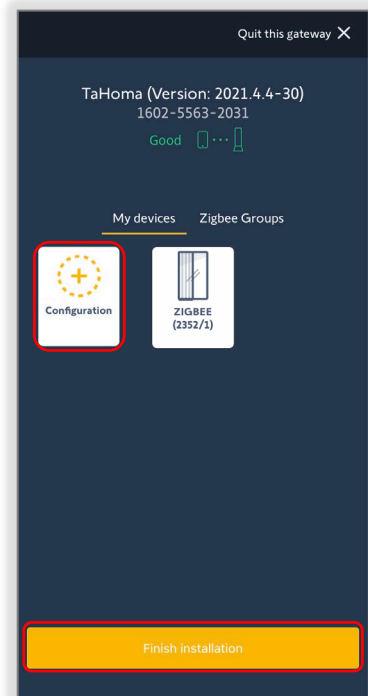


3. SELECT "Ok, done"

The motor will jog to confirm



4. To add more devices, SELECT "Configuration" to repeat the process
5. To complete the installation, SELECT "Finish Installation" and refer to the [Finish Installation section](#)



To create Zigbee groups, see [Appendix E](#).

To test Zigbee products, see [Appendix E](#).

To edit or delete Zigbee products, see [Appendix G](#).

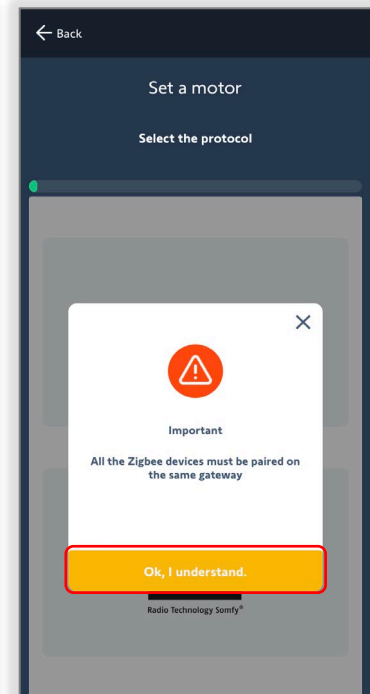
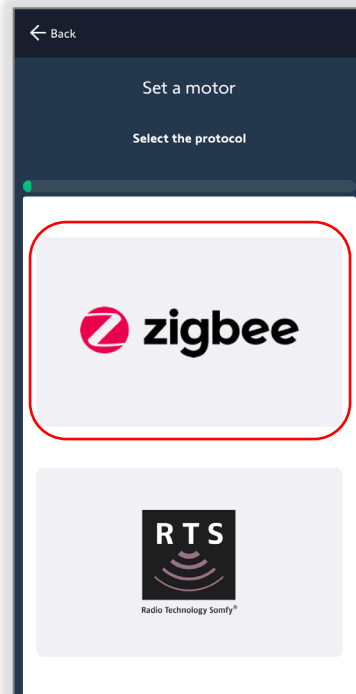
ADD A TUBULAR ZIGBEE MOTOR

To add a tubular Zigbee motor, follow the steps below.

1. SELECT "Zigbee" protocol

NOTE: For setting up multiple gateways in the Installer Profile – Zigbee and RTS device, all Zigbee devices must be paired on the same gateway.

2. SELECT "OK, I understand."

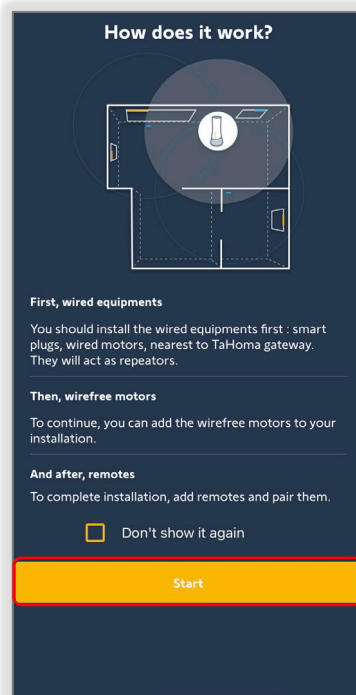


Understanding the order of installation

- Wired devices such as smart plugs and AC wired motors, which will act as repeaters
- WireFree motors
- Remote controls

NOTE: SELECT the check box to not show this tip again. To reactivate the tip, the app must be reinstalled.

3. SELECT "Start"



4. SCAN the motor QR code

If adding an AC tubular motor, continue to next page

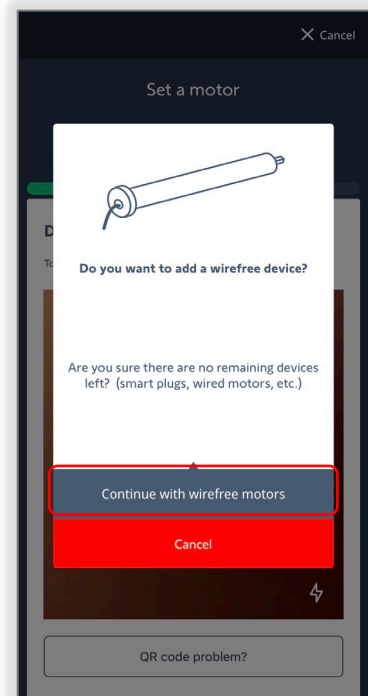
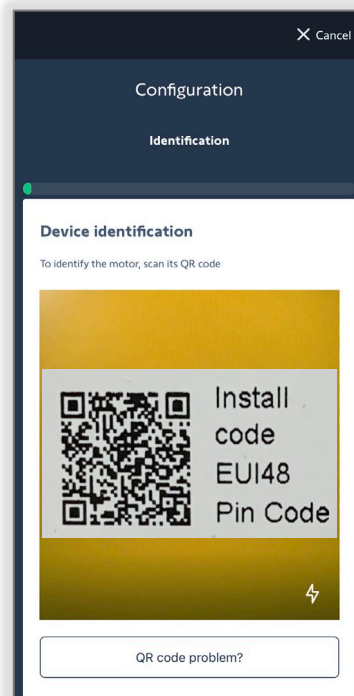
If adding a WireFree tubular motor, continue to step 5

NOTE: If missing the QR code or unable to scan the QR code, see [Appendix B](#).

NOTE: When scanning a WireFree Zigbee motor, a message will pop up asking if there are any remaining Smart Plugs or AC Zigbee motors to be added, add them before proceeding.

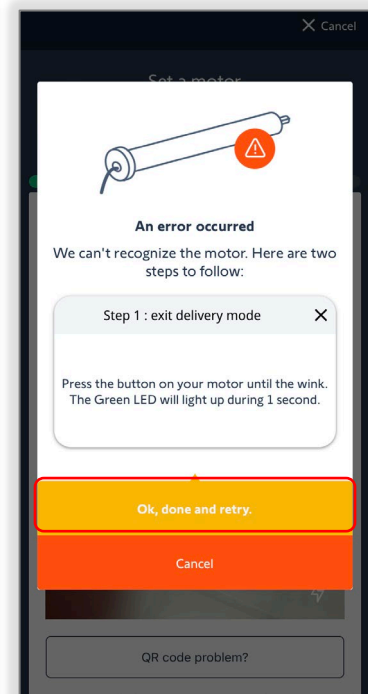
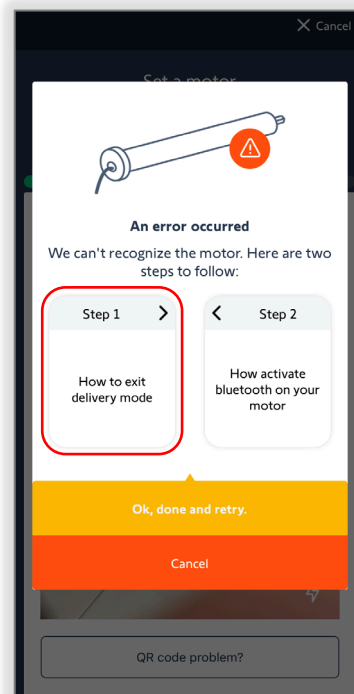
5. SELECT "Continue with WireFree motors"

For WireFree motors that require limit setting, continue to next page.

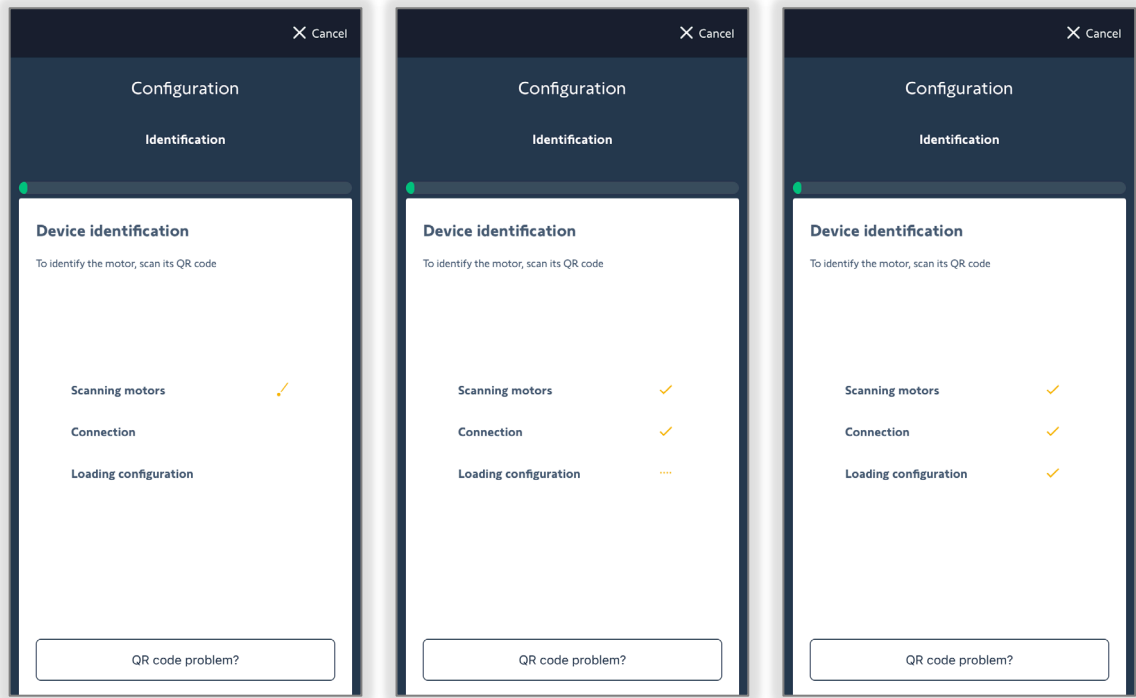


For WireFree motors that are pre-programmed with limits by the window covering manufacturer, follow the on-screen instruction to exit delivery mode:

1. SELECT "Step 1"
 2. PRESS & HOLD the PROGRAMMING BUTTON on the motor head until the motor jogs once, a GREEN LED will illuminate for 1 second
 3. SELECT "Ok, done and retry"
- No need to scan the QR code again, the app will automatically start scanning for the motor*



The app will now scan for the motor, connect to the motor and load the configuration. Once successfully connected, the motor will jog once.



Firmware updates for Zigbee products may be required at this time; see [Appendix D](#) to update motor firmware.

SET TUBULAR MOTOR LIMITS

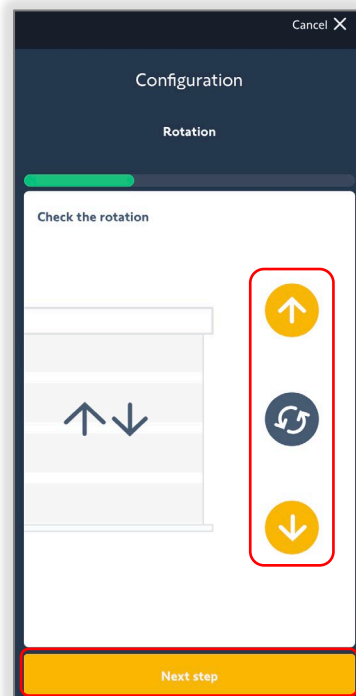
To set limits on a tubular motor, follow the steps below.

1. PRESS & HOLD the UP or DOWN button to check the direction of the motor

To modify the rotation, SELECT the REVERSE button to jog the motor

Check the direction again using the UP or DOWN button

2. SELECT "Next step"



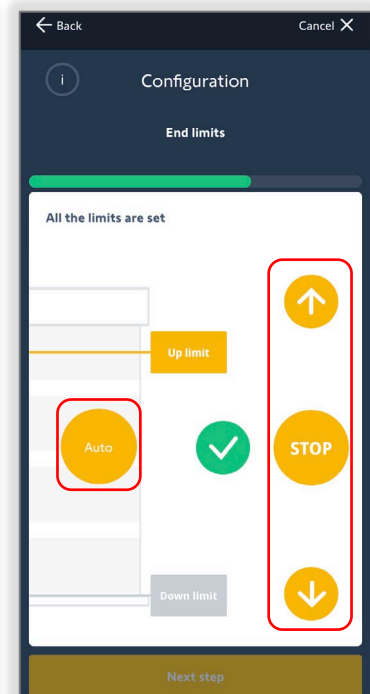
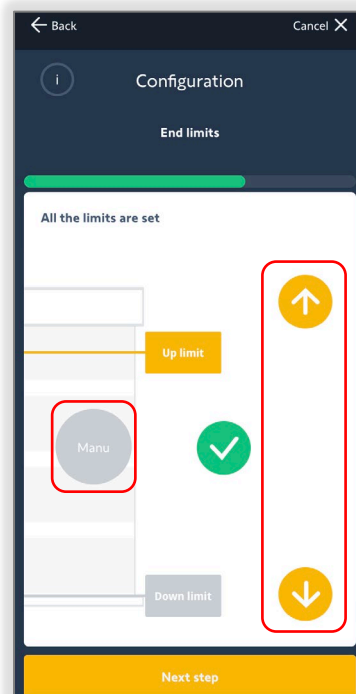
Understanding MANU (manual) and AUTO

MANU (default): When MANU is selected, the UP and DOWN buttons operate in a momentary fashion

- PRESS & HOLD – moves the motor in the direction until the UP or DOWN button is released
- PRESS & RELEASE – moves the motor UP or DOWN in small increments

AUTO: When AUTO is selected, the UP and DOWN buttons operate the motor in direction pressed until stopped

- PRESS & RELEASE – moves the motor in direction pressed until stopped
- STOP button – stops the motor



Set limits in Manu (manual) mode:

3. SELECT the Manu button
4. SELECT the "Up limit" button
5. PRESS & HOLD the UP button to move the motor to the desired upper limit
6. SELECT the GREEN checkmark to set the upper limit

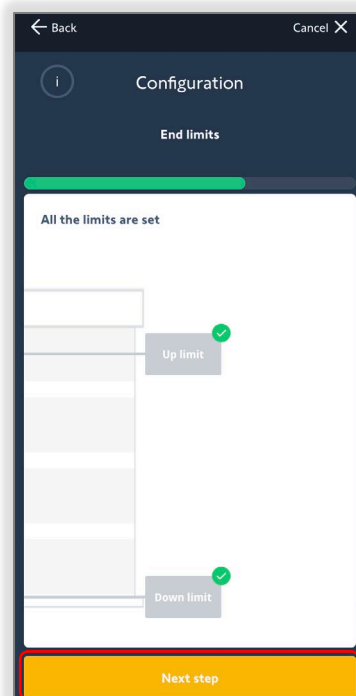
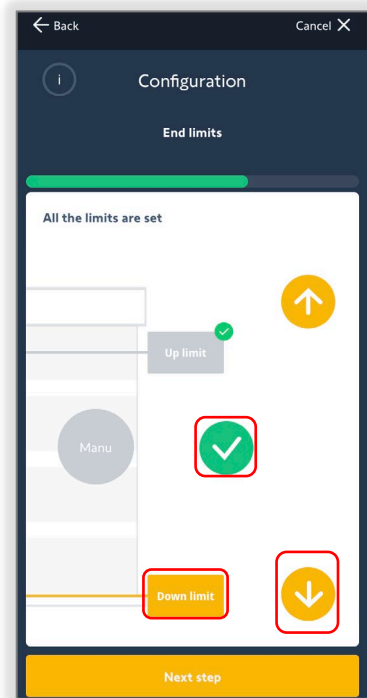
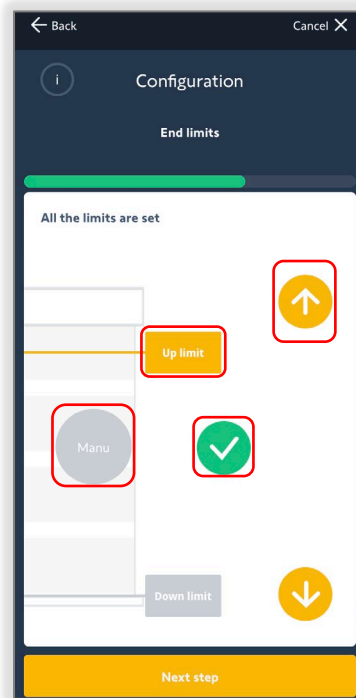
The motor will jog to confirm the limit has been set

7. SELECT the "Down limit" button
8. PRESS & HOLD the DOWN button to move the motor to the desired lower limit
9. SELECT the GREEN checkmark to set the lower limit

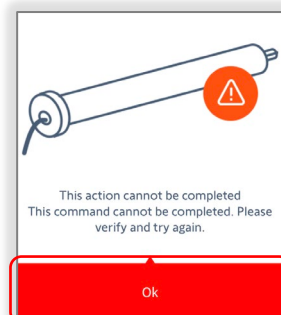
The motor will jog to confirm the limit has been set

10. SELECT "Next step" when complete

When complete, both "Up limit" and "Down limit" buttons will have a GREEN checkmark



For WireFree Motors: When confirming upper or lower limits that are too close to each other, the error message pictured here will pop up in the app. SELECT "OK" to readjust the limits.



Set limits in Auto mode:

3. SELECT the Auto button
4. SELECT the "Up limit" button

The motor will move in the UP direction continuously until the STOP button is pressed

5. SELECT the "STOP" button at the desired upper limit
6. SELECT the GREEN checkmark to set the upper limit

The motor will jog to confirm the limit has been set

7. SELECT the "Down limit" button

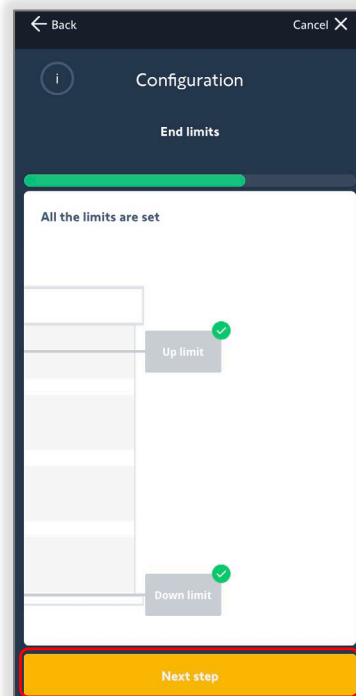
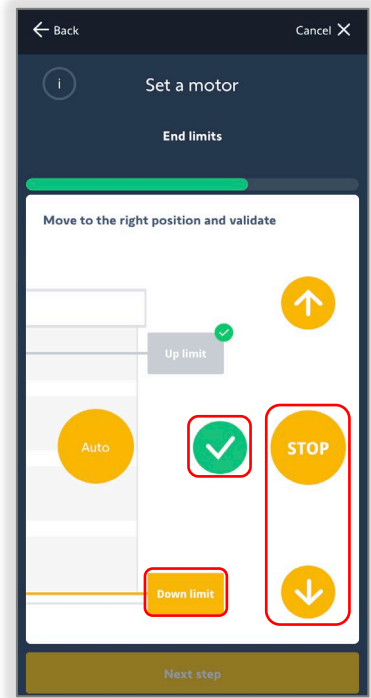
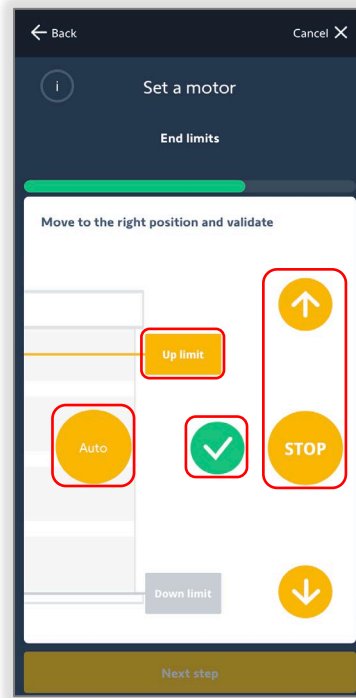
The motor will move in the DOWN direction continuously until the STOP button is pressed

8. SELECT the "STOP" button at the desired lower limit
9. SELECT the GREEN checkmark to set the lower limit

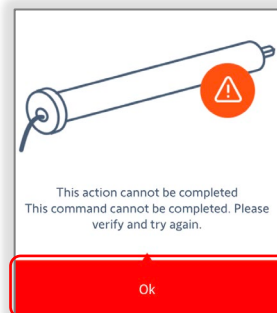
The motor will jog to confirm the limit has been set

10. SELECT "Next step" when complete

When complete, both "Up limit" and "Down limit" buttons will have a GREEN checkmark



For WireFree Motors: When confirming upper or lower limits that are too close to each other, the error message pictured here will pop up in the app. SELECT "OK" to readjust the limits.



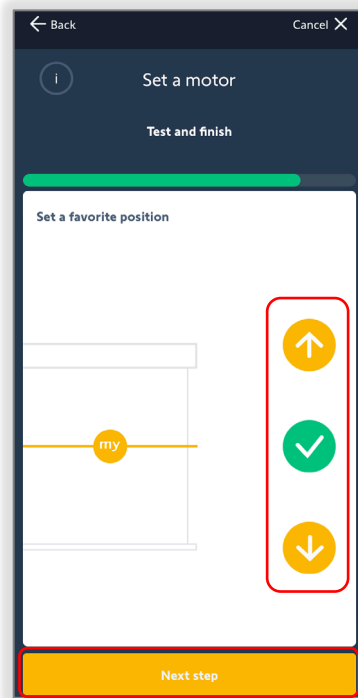
SET TUBULAR MOTOR "my" POSITION

To set the "my" position for a tubular motor, follow the steps below.

1. PRESS & HOLD the UP or DOWN button to move the motor to the desired "my" position
2. SELECT the GREEN checkmark to set the "my" position

The motor will jog once

3. SELECT "Next step"



ADJUST ADVANCED SETTINGS

To set additional setting for DC motors only, follow the steps below.

WireFree motor only:

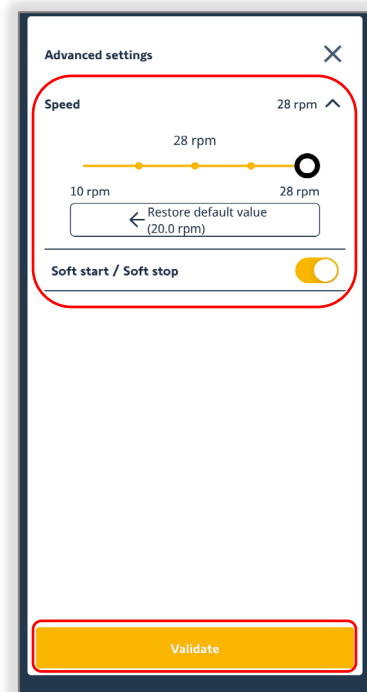
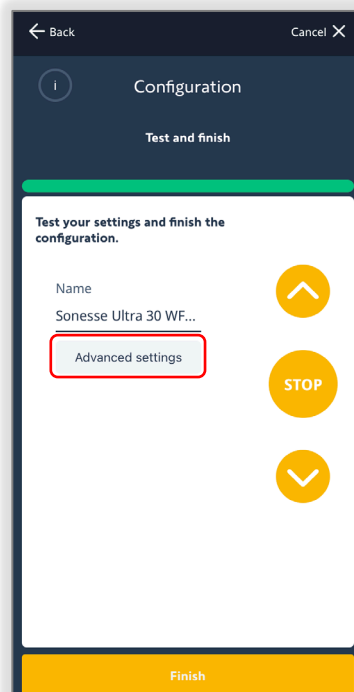
NOTE: AC tubular motors do not have Advanced settings.

1. SELECT "Advanced settings"
2. Maximize the Speed section:
MOVE the slider to adjust the speed of the motor between 10 rpm and 28 rpm

Default speed is 20 rpm

Soft start/Soft stop: TOGGLE the function ON or OFF

3. SELECT "Validate" when complete



NAME AND TEST THE DEVICE

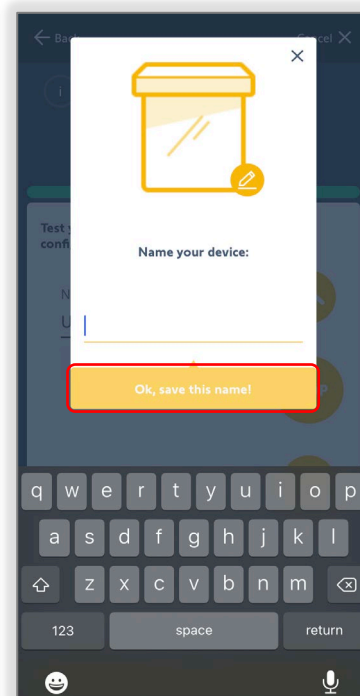
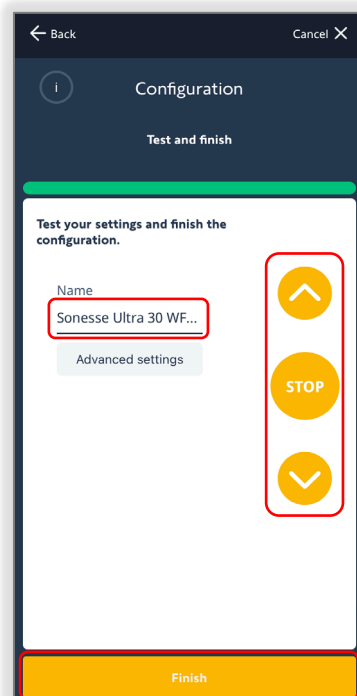
To name and test the device, follow the steps below.

Name the device:

1. SELECT the "Name" field
2. ENTER a name for the device
3. SELECT "OK, save this name!"

Test the device:

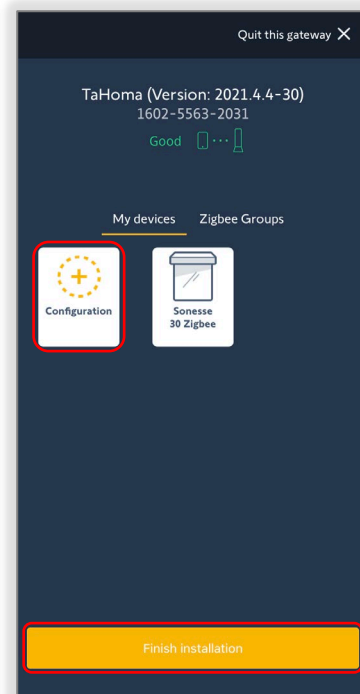
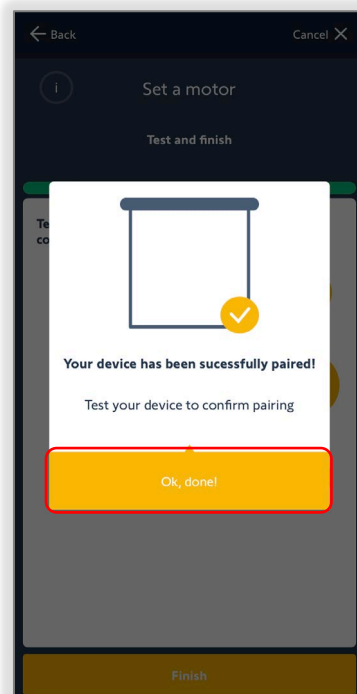
1. PRESS the UP, DOWN, or STOP buttons to test the motor
2. SELECT "Finish" when complete



3. SELECT "Ok, done"

The motor will jog once

4. To add more devices, SELECT "Configuration" to repeat the process
5. To complete the installation, SELECT "Finish Installation" and refer to the [Finish Installation section](#)



To create Zigbee groups, see [Appendix E](#).

To test Zigbee products, see [Appendix E](#).

To edit or delete Zigbee products, see [Appendix G](#).

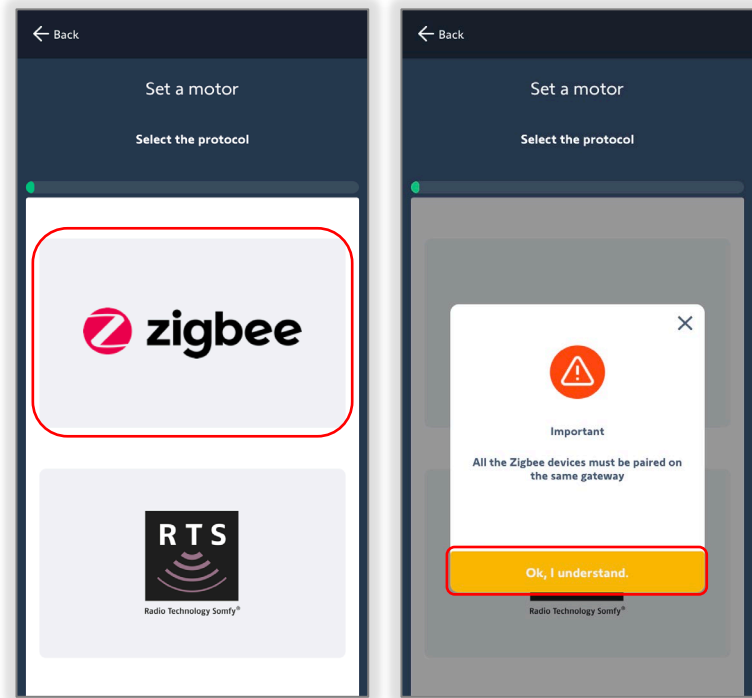
ADD A ZIGBEE REMOTE

To add a Zigbee remote, follow the steps below.

1. SELECT "Zigbee" protocol

NOTE: For setting up multiple gateways in the Installer Profile – Zigbee and RTS device, all Zigbee devices must be paired on the same gateway.

2. SELECT "Ok, I understand."

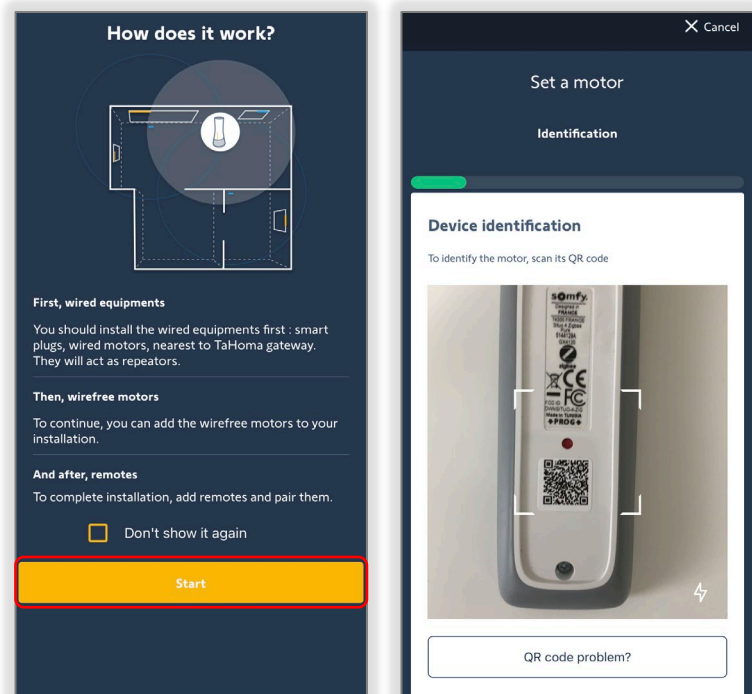


Understanding the Order of installation

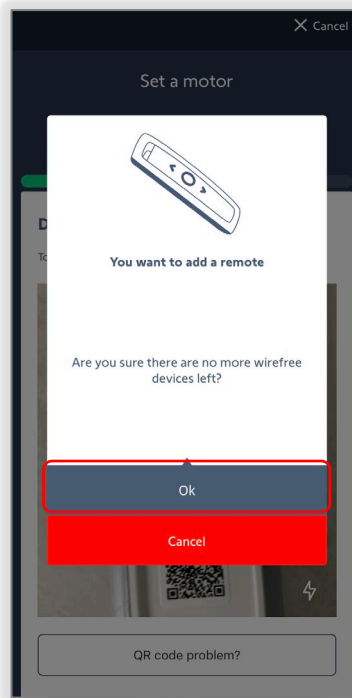
- Wired devices such as smart plugs and AC wired motors, which will act as repeaters
- WireFree motors
- Remote controls

NOTE: SELECT the check box to not show this tip again. To reactivate the tip, the app must be reinstalled.

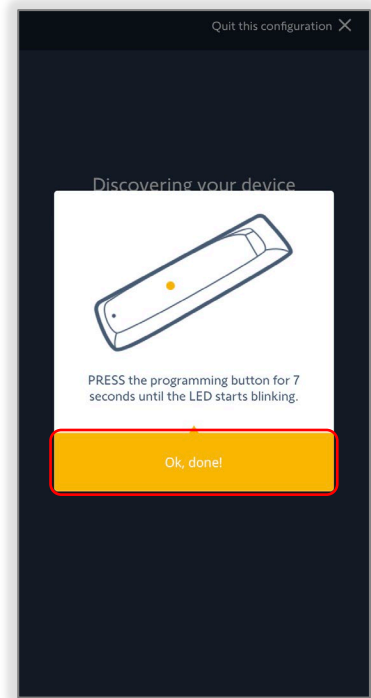
3. SELECT "Start"
4. SCAN the QR code on back of the Situ Remote



5. SELECT "Ok"



6. PRESS & HOLD the PROGRAMMING BUTTON on the back of the remote control until the LED starts blinking GREEN



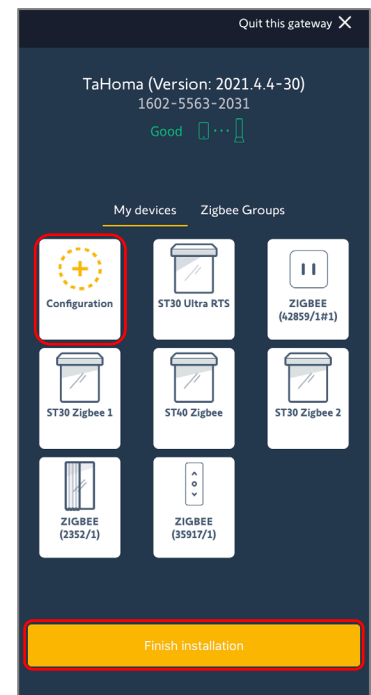
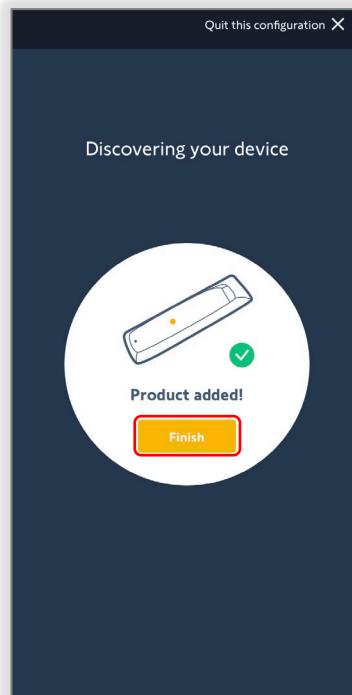
7. SELECT "OK, done"

8. SELECT "Finish"

9. To add more devices, SELECT "Configuration" to repeat the process

10. To complete the installation, SELECT "Finish Installation" and refer to the [Finish Installation section](#)

To pair a Zigbee remote, refer to the [Pair a Zigbee Remote section](#) on the next page.



To create Zigbee groups, see [Appendix E](#).

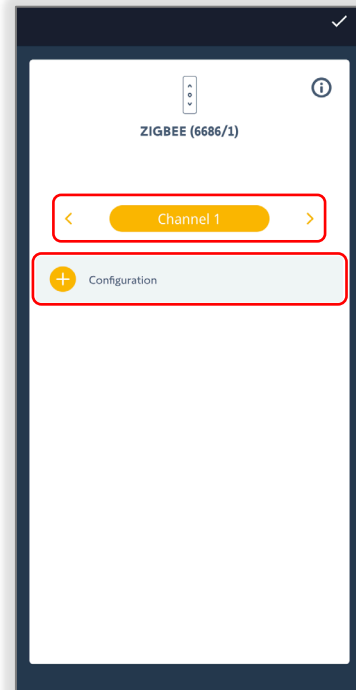
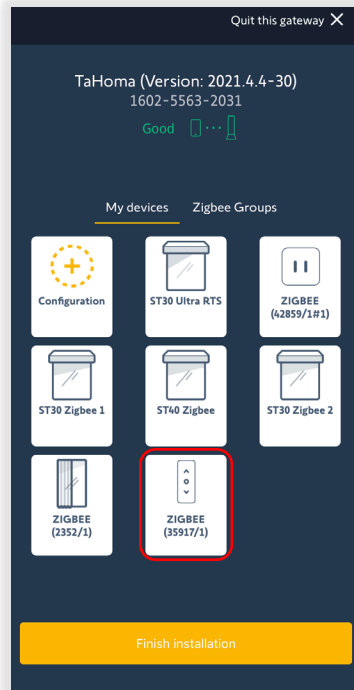
To test Zigbee products, see [Appendix E](#).

To edit or delete Zigbee products, see [Appendix G](#).

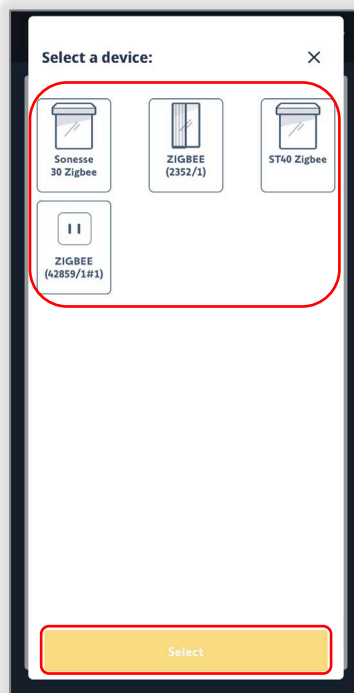
PAIR A ZIGBEE REMOTE

To pair a Zigbee remote or Zigbee groups, follow the steps below.

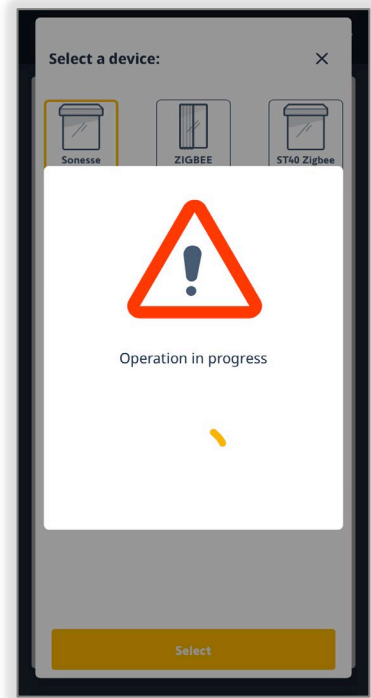
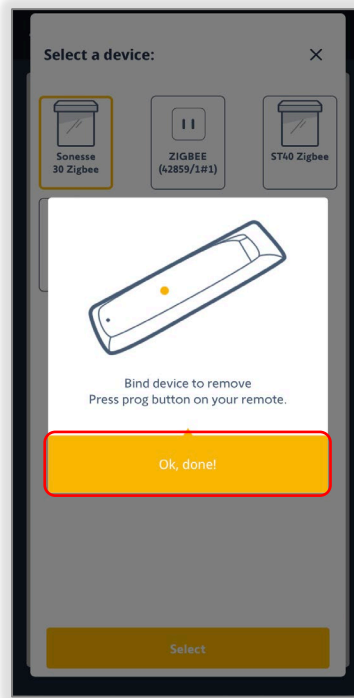
1. SELECT the Zigbee remote to pair
2. SELECT a Channel to pair
3. SELECT "Configuration"



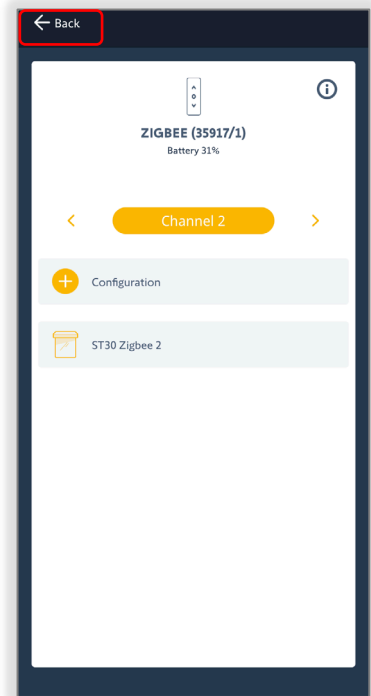
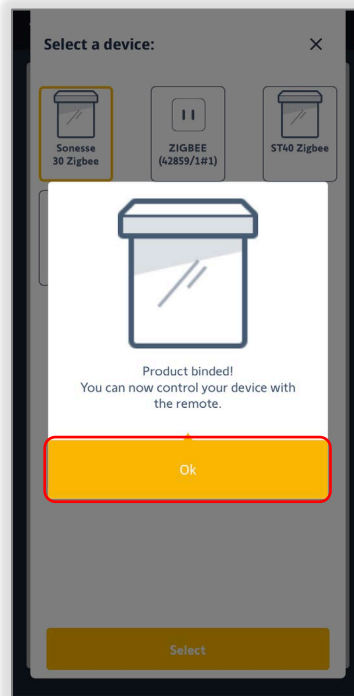
4. SELECT the Zigbee product or Group to pair
5. SELECT "Select"



6. PRESS & RELEASE the PROGRAMMING BUTTON on the back of the remote
7. SELECT "Ok, done!"



8. SELECT "Ok"



9. To pair more Zigbee devices, follow steps above
10. To complete the installation, SELECT "Back," then SELECT "Finish Installation" and refer to the [Finish Installation section](#)

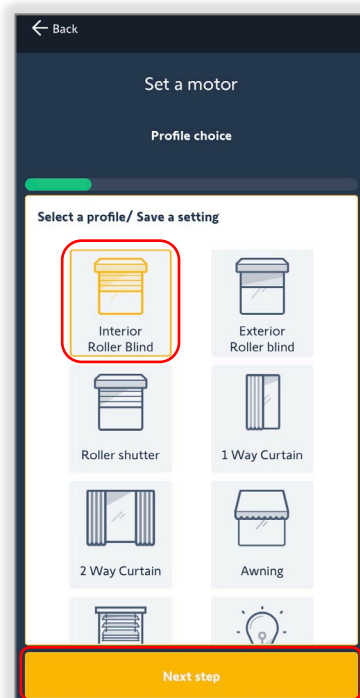
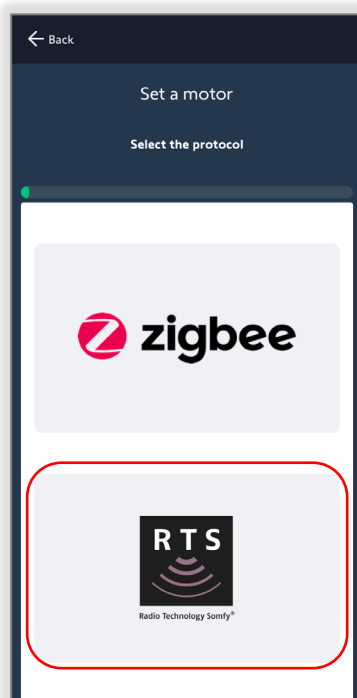
To test Zigbee products, see [Appendix E](#).

To edit or delete Zigbee products, see [Appendix G](#).

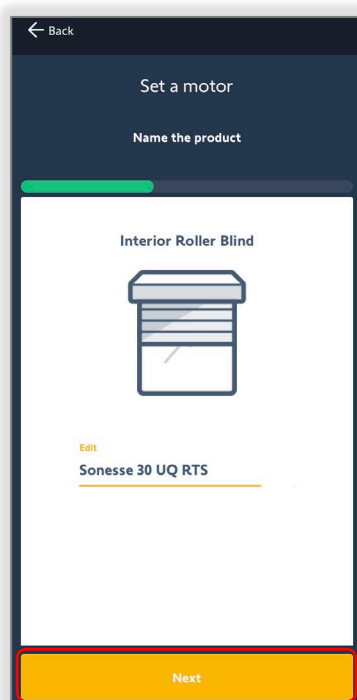
ADD AN RTS PRODUCT

To add an RTS product, follow the steps below.

1. SELECT "RTS" protocol
2. SELECT a Product Profile
3. SELECT "Next step"



4. ENTER the name in the Edit field for the RTS product
5. SELECT "Next"

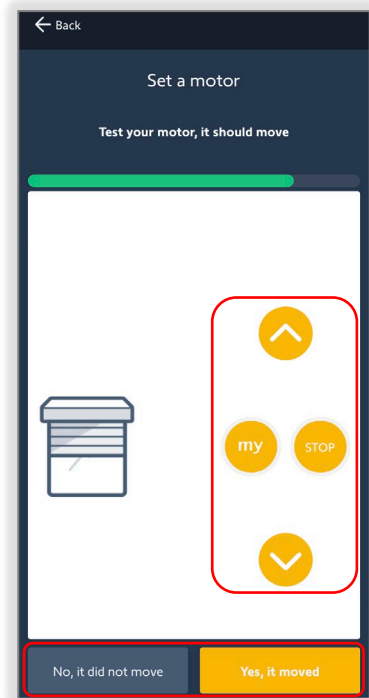
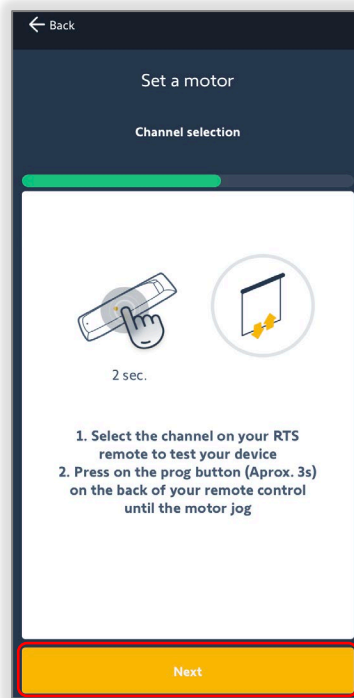


6. FOLLOW the on-screen instructions:
- SELECT the channel on the RTS remote
 - PRESS & HOLD the PROGRAMMING BUTTON on the back of the remote control until the motor jogs once

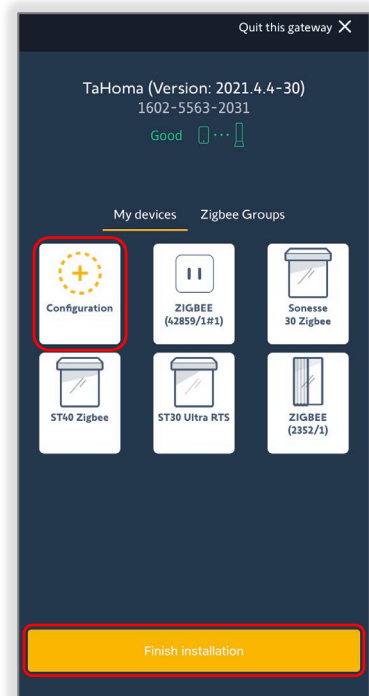
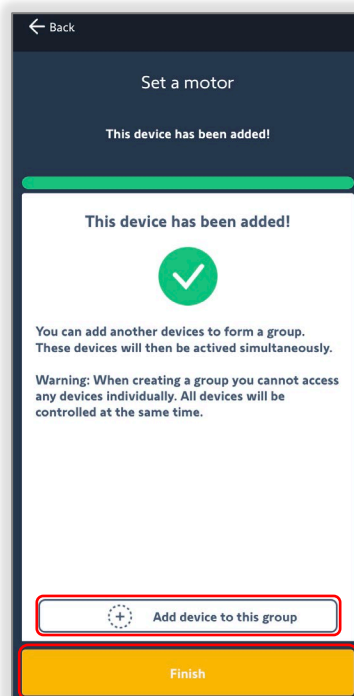
7. SELECT "Next"

The motor will jog

8. SELECT a command (UP, DOWN, MY, or STOP)
9. SELECT "Yes, it moved" OR SELECT "No, it did not move" to try again



10. SELECT "Add device to this group" to create a group for RTS motors OR SELECT "Finish" when complete



11. To add more devices, SELECT "Configuration" to repeat the process
12. To complete the installation, SELECT "Finish Installation" and refer to the [Finish Installation section](#)

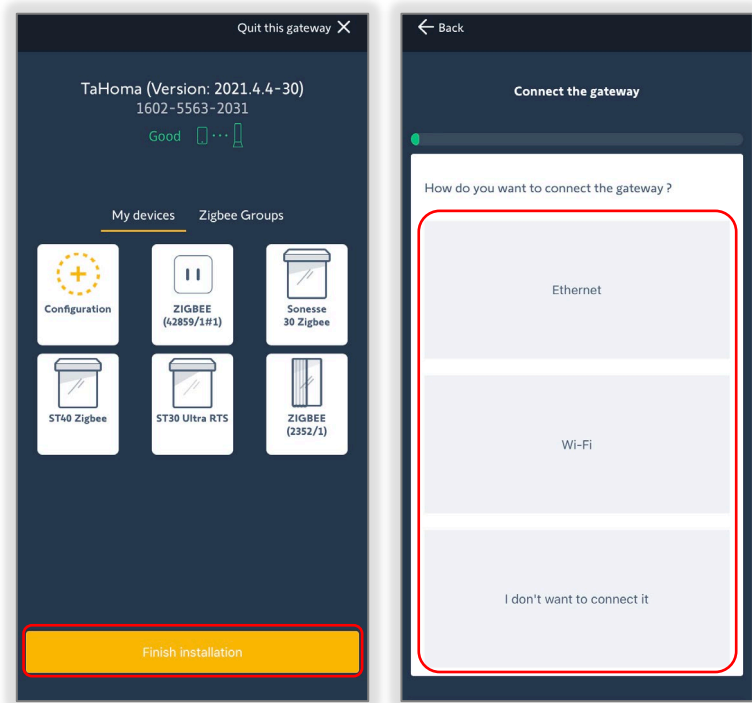
To test Zigbee products, see [Appendix F](#).

To edit or delete Zigbee products, see [Appendix G](#).

FINISH INSTALLATION

To finish the installation and connect the TaHoma to the network, follow the steps below.

1. SELECT "Finish installation"
2. SELECT the network connection method
 - Ethernet – requires TaHoma Ethernet Adaptor (Sold Separately)
 - Wi-Fi – Requires Wi-Fi credentials
 - I don't want to connect it



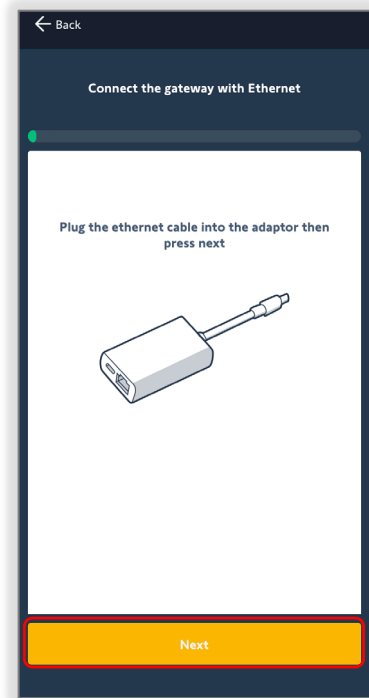
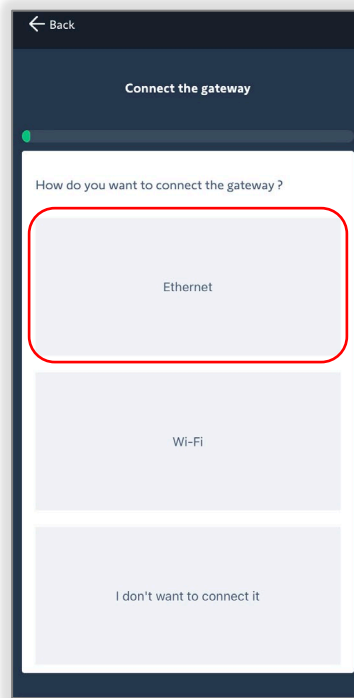
I don't want to connect it – Select this option for the following:

- The TaHoma network connection was previously configured
- A site with no internet access, but will be configured at a later time

NOTE: An internet connection will be required to operate devices

Ethernet Connection – TaHoma® Ethernet Adaptor #1870470 (Sold Separately)

1. SELECT “Ethernet”
2. PLUG IN the ethernet cable into the adaptor, then SELECT “Next”



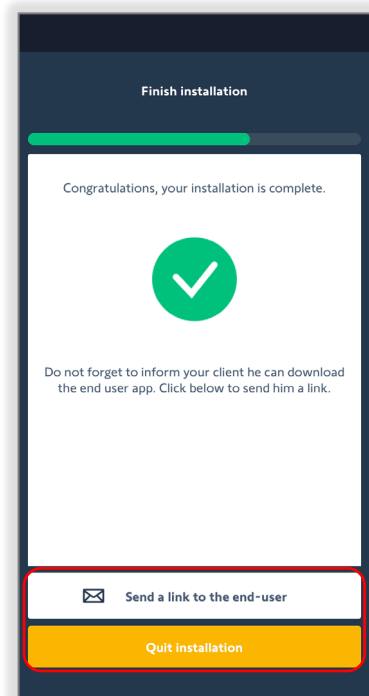
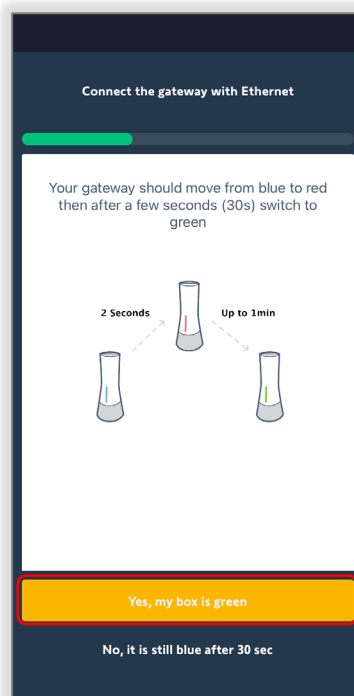
3. The TaHoma LED will change from **BLUE** to **RED** to **GREEN**
 - SELECT “Yes, my box is **GREEN**”
 - Or SELECT “No, it is still **BLUE** after 30 seconds”

4. SELECT “Send a link to the end-user”

An email app will open with a link to the end-user app

Account creation will be required for the end-user

5. SELECT “Quit installation” when complete



Troubleshooting:

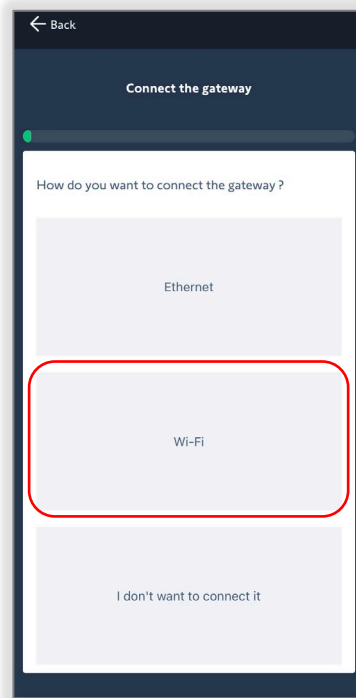
- Ensure the ethernet cable is plugged into the Ethernet Adaptor
- A “click” can be heard when properly inserted
- Ensure no blocked ports on a managed network
- Request the network manager for a DHCP Reservation via MAC Address
- Check to confirm the LEDs are illuminated on the Ethernet Adaptor

Wi-Fi Connection – End-user Wi-Fi Credentials required (SSID and password)

1. SELECT “Wi-Fi”
2. ENTER the Wi-Fi Credentials
These fields are case sensitive

If the same Wi-Fi credentials were entered for the mobile device being used, SELECT “Copy last Wi-Fi name and password”

3. SELECT “Connect the gateway”



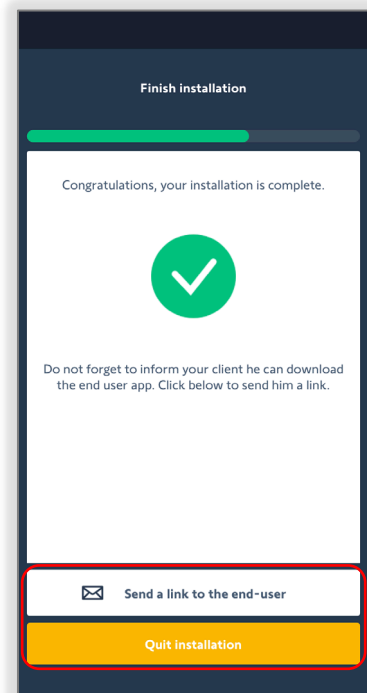
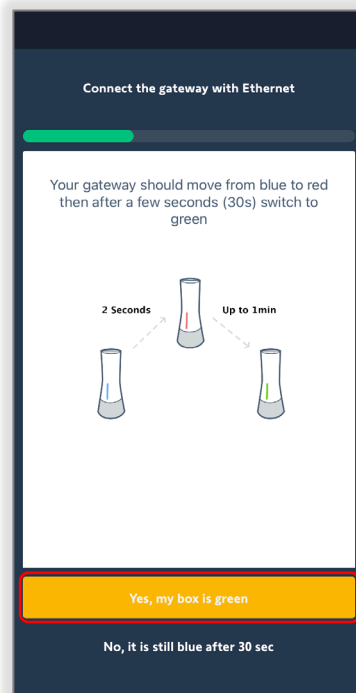
4. The TaHoma LED will change from BLUE to RED to GREEN
 - SELECT “Yes, my box is GREEN”
 - Or SELECT “No, it is still BLUE after 30 seconds”

5. SELECT “Send a link to the end-user”

An email app will open with a link to the end-user app

Account creation will be required for the end-user

6. SELECT “Quit installation” when complete



Troubleshooting :

- Ensure the network is a 2.4 GHz Wi-Fi
- Ensure the correct SSID and Wi-Fi password are entered
- Request the network manager for a DHCP Reservation via MAC Address
- Ensure no blocked ports on a managed network

APPENDIX

[APPENDIX A] AVAILABLE COMMANDS & ACTIONS



TAHOMA ZIGBEE COMMANDS	
Close/Down	Moves blind to the fully closed position
Open/Up	Moves blind to the fully open position
Stop	Stops blind when moving
My	Moves blind to the programmed "my" position if blind is at rest



TAHOMA SMART PLUG COMMANDS	
Identify	Turns LED GREEN to RED without turning output ON or OFF



TAHOMA RTS COMMANDS	
Close	Moves blind to the fully closed position
Open	Moves blind to the fully open position
Stop	Stops blind when moving
My	Moves blind to the programmed "my" position if blind is at rest
Tilt Up	Tilts blind up (only available for tilt blinds)
Tilt Down	Tilts blind down (only available for tilt blinds)

[APPENDIX B] UNABLE TO READ QR CODE

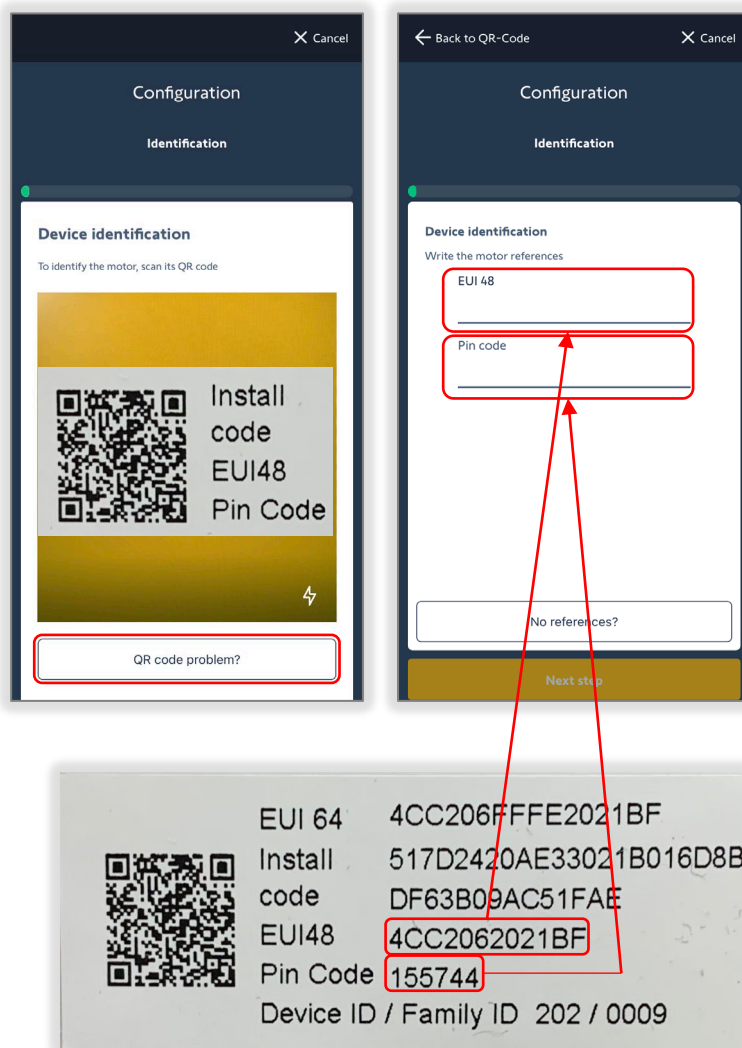
If the QR cannot be scanned, follow the steps below.

Tubular AC, DC, or drapery motor:

1. SELECT "QR code problem?"
2. ENTER the EUI 48# and Pin code from the QR label found on the motor

The EUI48 # consists of 12 digits

3. SELECT "Next step"
The motor will jog when successfully connected
4. Refer to "[Set Drapery Motor Limits](#)" or "[Set Tubular Motor Limits](#)" section to continue programming the motor

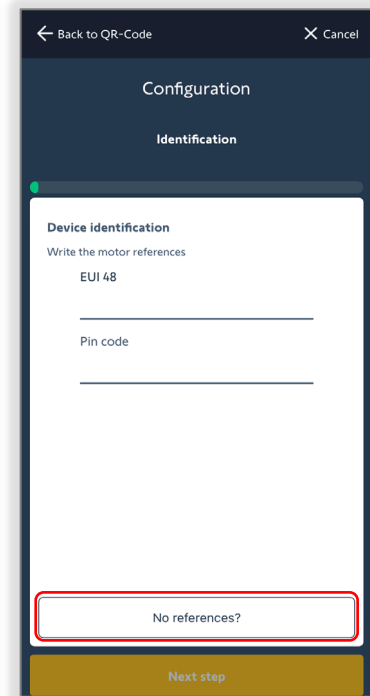
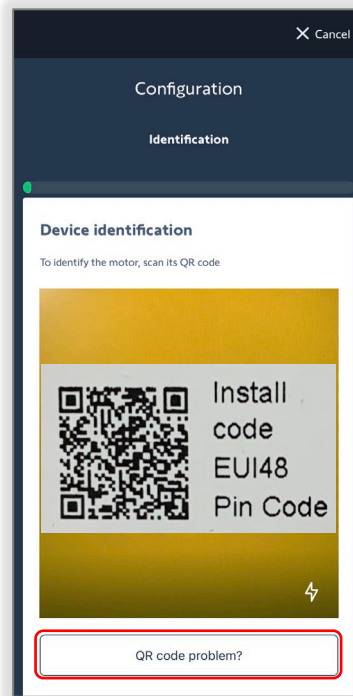


[APPENDIX C] MISSING QR CODE

If the QR code label is missing, follow the steps below.

Tubular Motor:

1. SELECT "QR code problem?"
2. SELECT "No references?"



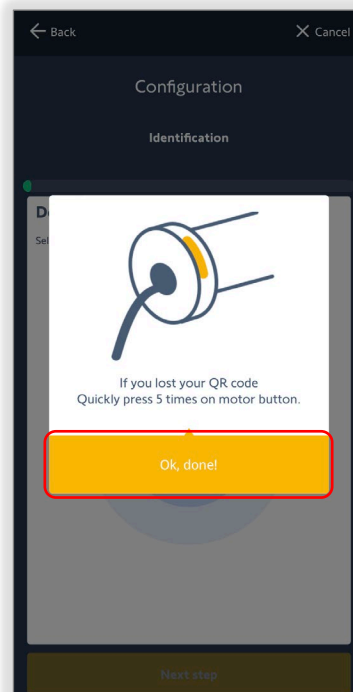
To connect to the motor, the motor must be in Bluetooth mode.

3. BRIEFLY PRESS the "PROGRAMMING BUTTON" on the motor head 5 times

For drapery motors, BRIEFLY PRESS the "S" BUTTON 5 times

4. SELECT "Ok, done!"

The app will start scanning for motors



5. SELECT the motor to be configured

The selected motor will jog

If the motor to be configured is not listed, drag the screen down to refresh the list

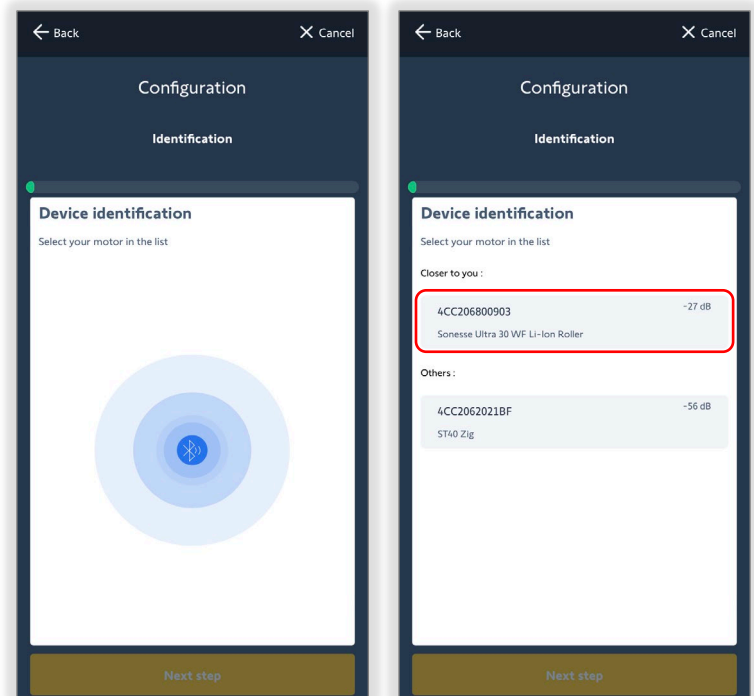
6. SELECT "Next step"

The selected motor will jog

7. Refer to "[Set Drapery Motor Limits](#)" or "[Set Tubular Motor Limits](#)" section to continue configuring the motor

NOTE: After configuring a Tubular or Drapery motor, the app will return to the Device Identification page.

8. To connect to the same or different motor, SELECT "Back" and repeat steps 2 through 7



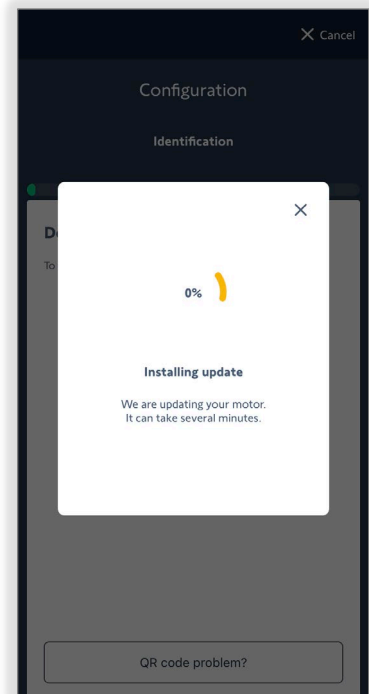
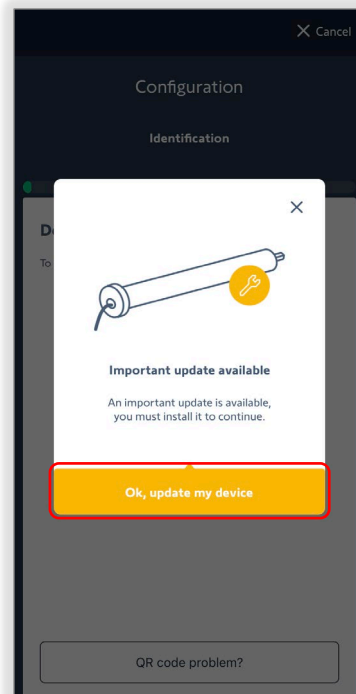
[APPENDIX D] MOTOR FIRMWARE UPDATE

To update motors when required, follow the steps below.

When configuring an AC, DC, or a drapery motor, the app will prompt “Important update available”

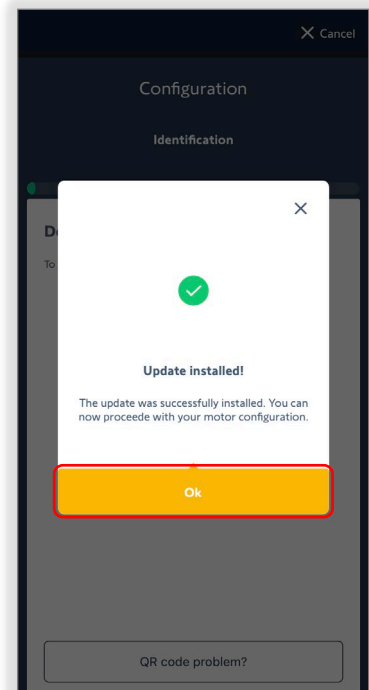
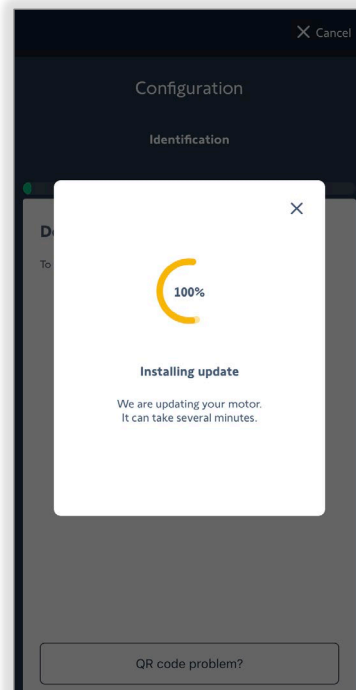
1. SELECT “Ok, update my device”

This process may take a few minutes



2. SELECT “Ok” when complete

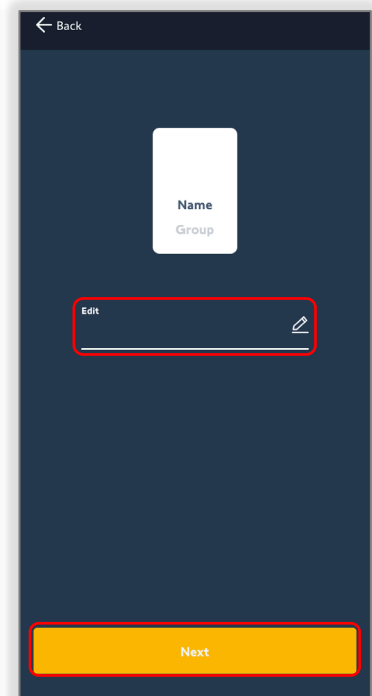
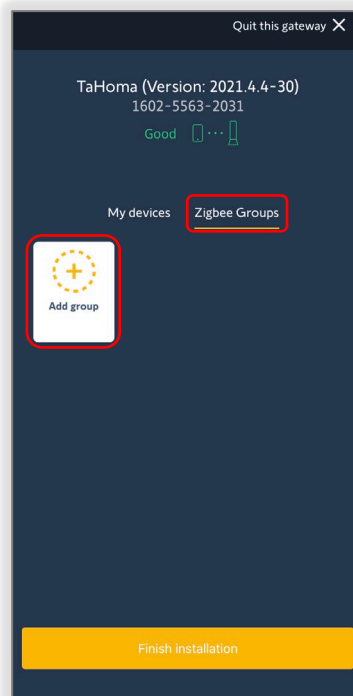
Continue the steps to configure the AC, DC, or drapery motor.



[APPENDIX E] ZIGBEE GROUPS

To create Zigbee groups, follow the steps below.

1. SELECT "Zigbee Groups"
2. SELECT "Add group"
3. SELECT the Pencil icon to name the group
4. SELECT "Next"



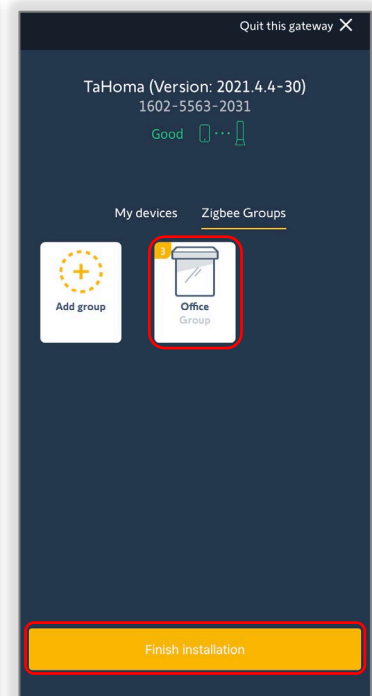
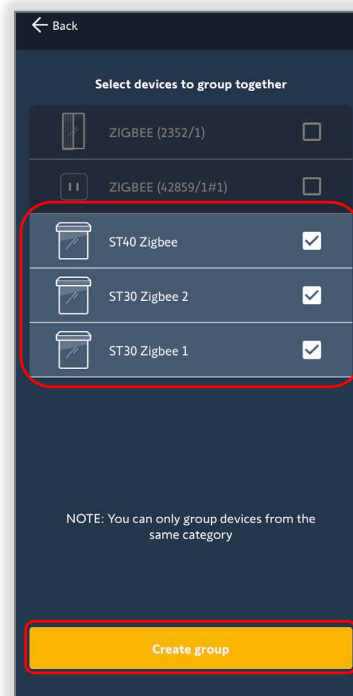
5. SELECT the devices to group together

NOTE: Only devices from the same category can be grouped.

Allowed groups:

- AC motors only
- DC motors only
- AC and DC motors only
- Drapery motors only
- Smart plugs only

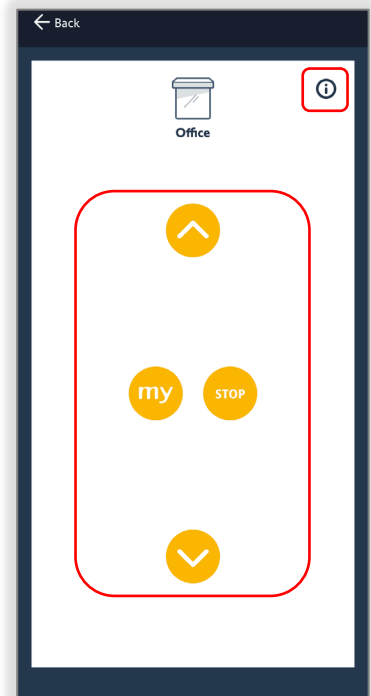
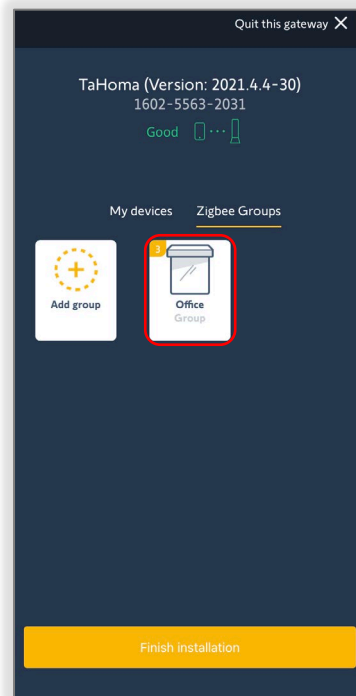
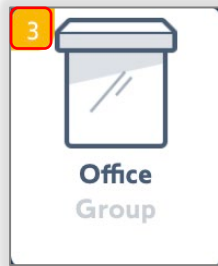
6. SELECT "Create group"
7. SELECT "Finish installation" when complete



Test Zigbee Groups:

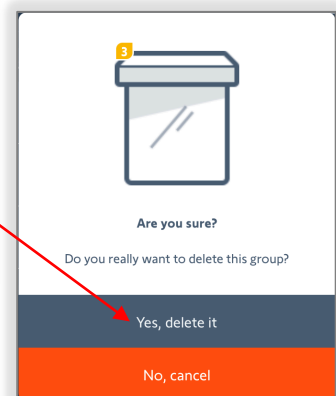
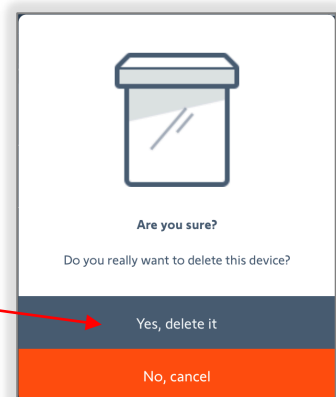
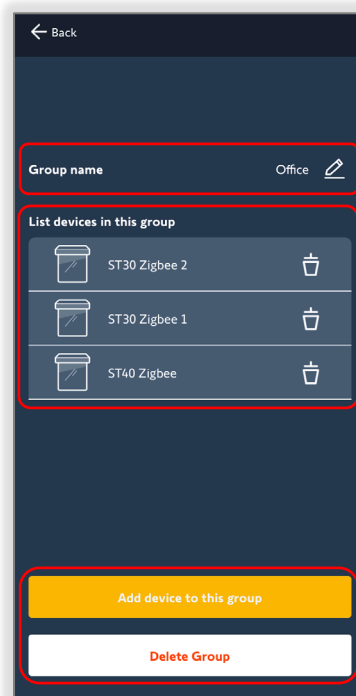
1. SELECT a Zigbee group
Example: Office
2. SELECT the command to operate the group

The number of devices in a group will be visible in the top left corner for each group



Edit Zigbee Groups:

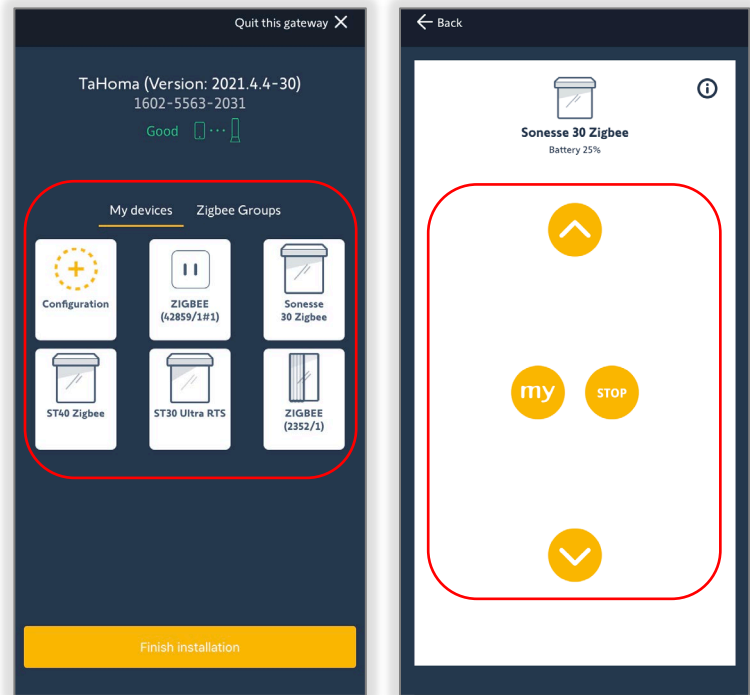
1. SELECT the "i" icon
 - Rename the group (Pencil icon)
 - Delete a device from the group (Trash bin icon)
 - Add device to this group
 - Delete Group



[APPENDIX F] TEST A PRODUCT

To test a Zigbee or RTS product, follow the steps below.

1. SELECT a product to test
Example: Sonesse 30 Zigbee
2. SELECT the command to operate the motor or plug



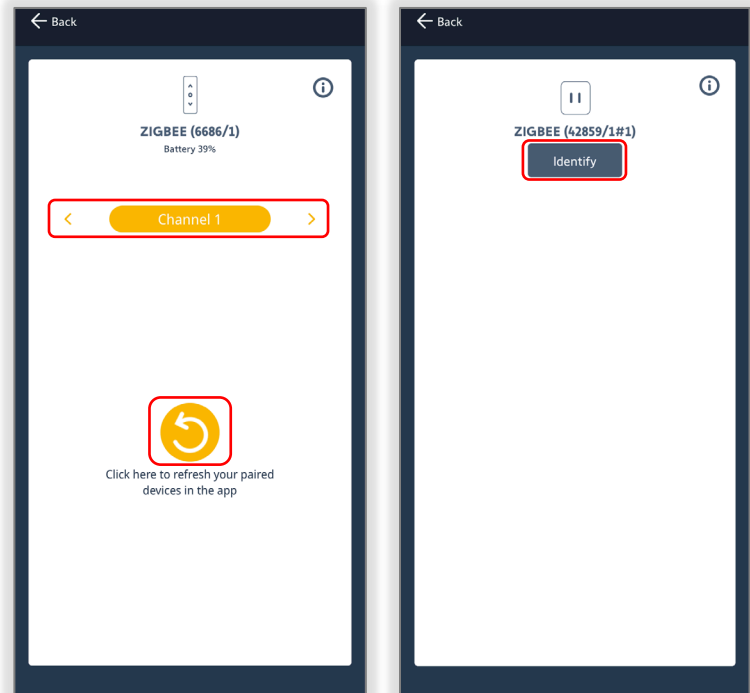
For the following products:

- Situo remotes will have a "refresh" button

Requires a BRIEF PRESS of the PROGRAMMING BUTTON - This will show the paired devices on the selected channel

- Smart Plug will have an identify button

SELECT the "Identify" button to turn the LED ON and OFF - This will not turn the output ON and OFF



[APPENDIX G] EDIT OR DELETE A PRODUCT

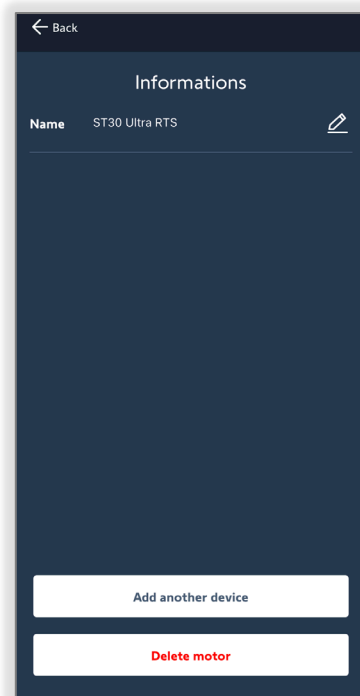
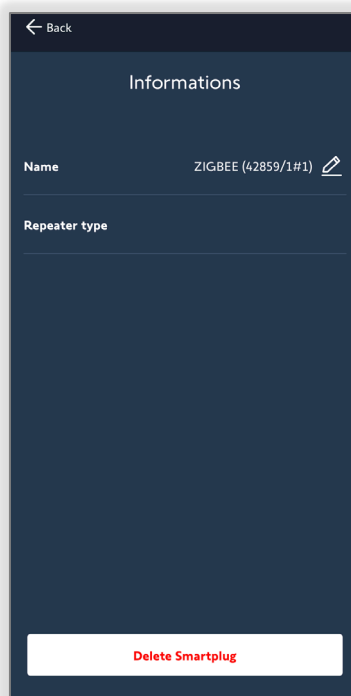
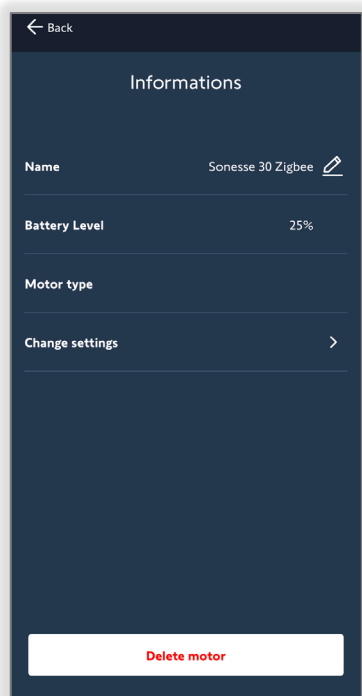
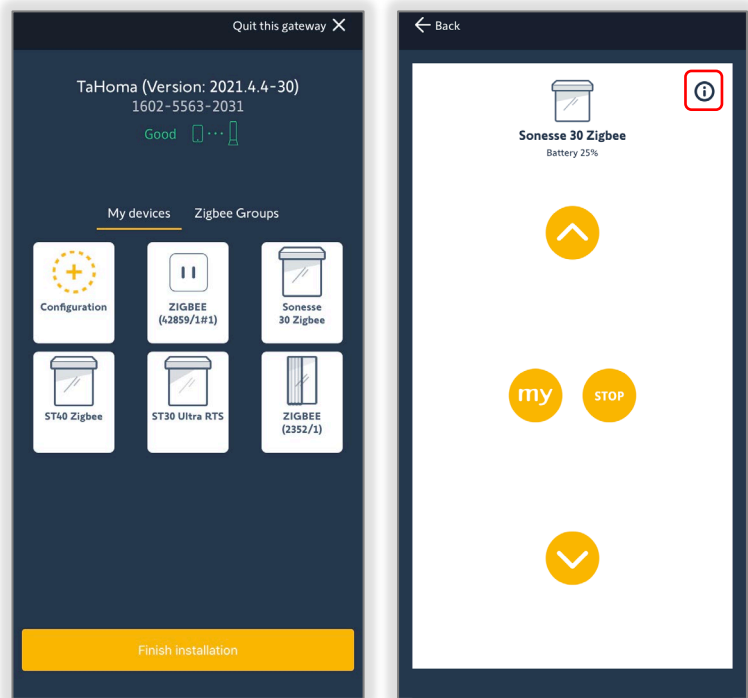
To edit or delete a Zigbee or RTS product, follow the steps below.

1. SELECT a product to edit
Example: Sonesse 30 Zigbee

2. SELECT the "i" icon

Informations Page:

- **Name** – SELECT the Pencil icon to change the name of the product
- **Battery Level** – Battery percentage (only for Zigbee WireFree motors)
- **Motor type** – Motor, Repeater, or Remote classification
- **Paired devices** – Pair or delete Zigbee devices (only for Zigbee Situo remotes)
- **Change settings** – scan the motor while in Bluetooth mode to adjust limits, rotation direction, etc.
- **Add another device** – Add an RTS motor to create a group (only for RTS motors)
- **Delete motor/Smartplug/remote** – Delete the product



[APPENDIX H] MOTOR CONFIGURATION ERROR

If a motor cannot be recognized after scanning the QR code, follow the steps below.

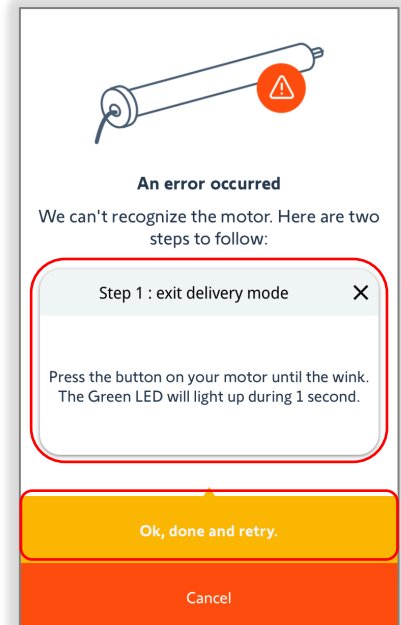
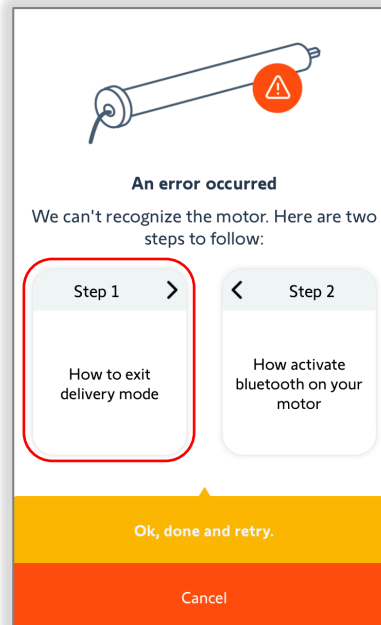
Exit Delivery Mode:

1. SELECT "Step 1"
2. For tubular motors:
PRESS & HOLD the PROGRAMMING BUTTON on the motor head until the motor jogs once
The GREEN LED will light up for 1 second

For Drapery motors:
PRESS & HOLD the "S" BUTTON until the motor jogs once

3. SELECT "Ok, done and retry" and refer to [Add A Tubular Zigbee Motor](#) or [Add A Drapery Motor](#) sections

SELECT "Cancel" to return to scan a QR code



Activate Bluetooth Mode:

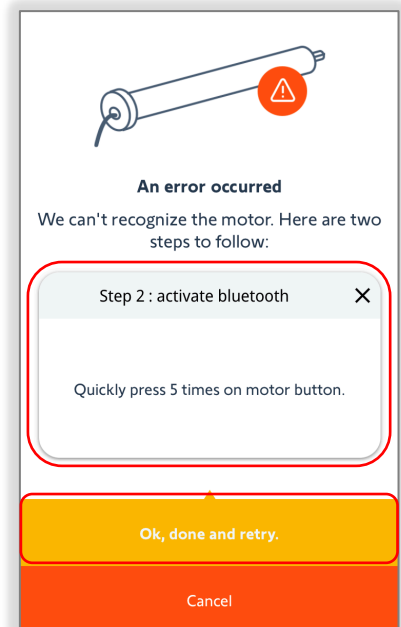
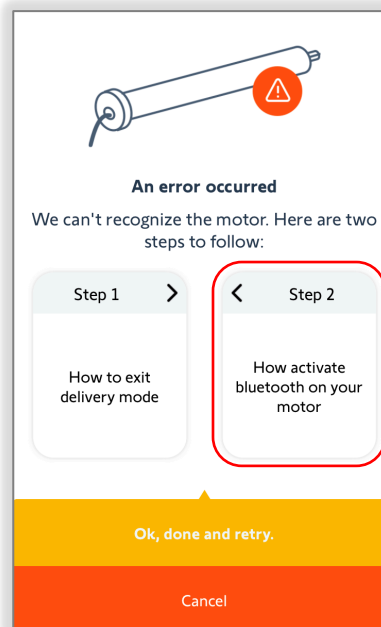
NOTE: Stay within 10 feet for Bluetooth range

1. SELECT "Step 2"
2. For tubular motors:
BRIEFLY PRESS the PROGRAMMING BUTTON 5 times on the motor head

For Drapery motors:
BRIEFLY PRESS the "S" BUTTON 5 times on the motor

3. SELECT "Ok, done and retry" and refer to [Add A Tubular Zigbee Motor](#) or [Add A Drapery Motor](#) sections

SELECT "Cancel" to return to scan a QR code



ABOUT SOMFY

SOMFY® has been improving everyday life for more than 270 million people by designing and manufacturing intelligent motorization solutions for interior window coverings and exterior solar protections. Somfy innovates to automate and connect shades, blinds, draperies, awnings, rolling shutters, exterior screens & pergolas for commercial and residential buildings in 58 countries across the globe. With 170+ million motors produced over the last half century, Somfy is committed to creating reliable and sustainable solutions that promote the best way of living and well-being for all.

FOR QUESTIONS OR ASSISTANCE PLEASE CONTACT TECHNICAL SUPPORT:

(800) 22-SOMFY (76639)

technicalsupport_us@somfy.com

SOMFY SYSTEMS INC

SOMFY NORTH AMERICAN HEADQUARTERS

121 Herrod Blvd.

Dayton, NJ 08810

P: (609) 395-1300

F: (609) 395-1776

FLORIDA

1200 SW 35th Ave.

Boynton Beach, FL 33426

F: (561) 995-7502

CALIFORNIA

15301 Barranca Parkway

Irvine, CA 92618-2201

F: (949) 727-3775

SOMFY ULC

SOMFY Canada Division

6411 Edwards Blvd

Mississauga, ON L5T 2P7

P: (905) 564-6446

F: (905) 238-1491

www.somfypro.com

A BRAND OF **SOMFY** GROUP

