

WireFree RTS Motor Quick Programming Guide

Sonesse® ULTRA 30 WireFree Li-ion | Sonesse® 28 WireFree Li-ion | Sonesse® 28 WireFree External Battery

Sonesse® 40 WireFree Li-ion | Tilt Only 50 WireFree | Cord Lift WireFree TL25 Motor

IMPORTANT: Upper and lower limits are set at the factory. In the event limit setting is required, follow steps to RESET MOTOR TO FACTORY MODE and proceed with INITIAL PROGRAMMING AND LIMIT SETTING.

TO FINISH PROGRAMMING:

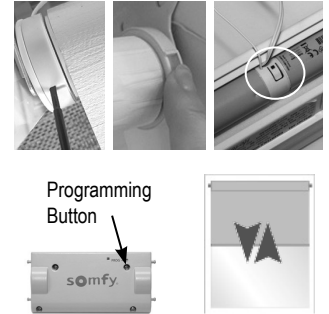
Shades with External Battery Powered Motors (Except Honeycomb):

- 1) **Supply power to the motor.** The shade will jog **twice**.
- 2) Choose the transmitter you wish to control the shade and choose the appropriate channel for control.
- 3) **PRESS & HOLD** the **UP** and **DOWN** buttons on the transmitter until the shade jogs once.
- 4) **BRIEFLY PRESS** the **PROGRAMMING BUTTON** on the transmitter. The shade will jog **once**.

The transmitter is now paired to the shade.

Shades with Embedded Battery (Li-ion) and Honeycomb:

- 1) **Supply power to the motor** (*Honeycomb only*)
 - 2) **BRIEFLY PRESS** the **PROGRAMMING BUTTON** on the motor (see examples to the right). The shade will jog **twice**.
 - 3) Choose the transmitter you wish to control the shade and choose the appropriate channel for control.
 - 4) **BRIEFLY PRESS** the **PROGRAMMING BUTTON** on the transmitter. The shade will jog **once**.
- The transmitter is now paired to the shade.



INITIAL PROGRAMMING AND LIMIT SETTING

NOTE: Motor will exit programming mode after 2 minutes of inactivity. Prior to confirming limits, the shade only operates when the **UP** or **DOWN** buttons are continuously pressed. Releasing the buttons stops the shade.

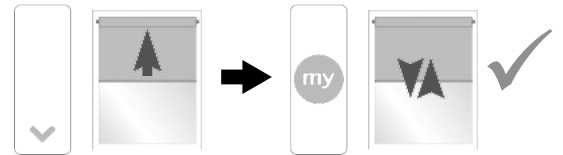
Step 1: To initiate programming **PRESS & HOLD** both the **UP** and **DOWN** buttons at the same time until the shade jogs.



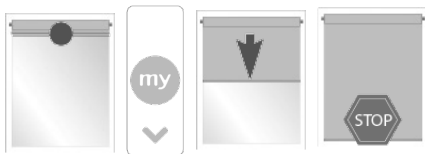
Step 2: Check the direction of operation. **PRESS** the **DOWN** button and confirm the shade lowers.



If the shade raises instead of lowering, change the direction - **PRESS & HOLD** the **MY/STOP** button until the shade jogs. Confirm correct direction of operation before proceeding.



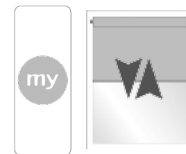
Step 3: Bring the shade to your desired upper limit. **PRESS & HOLD** both the **MY/STOP** and **DOWN** buttons until the shade begins to move down, then release. Stop the shade at the desired lower limit, adjust by pressing the **UP** or **DOWN** buttons.



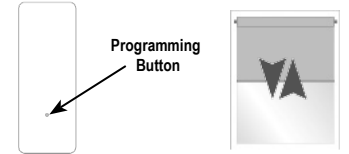
Step 4: **PRESS & HOLD** the **UP** and **MY/STOP** buttons until the shade begins to move up. The shade will stop at the original upper limit.



Step 5: **PRESS & HOLD** the **MY/STOP** button until the shade jogs to confirm both limit settings.

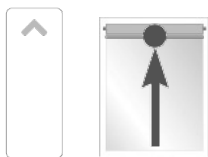


Step 6: To finalize **BRIEFLY PRESS** the **PROGRAMMING** button on the back of the transmitter. The shade will jog and will now operate in **user mode**. A brief press of the **UP** or **DOWN** button will send the shade to the respective limit.



ADJUSTING THE LIMITS IN USER MODE

Step 1: Move the shade to the current limit position you wish to adjust and let it stop.



Step 2: **PRESS & HOLD** both **UP** and **DOWN** buttons simultaneously until the shade jogs, then release.



Step 3: Adjust to a new limit position using the **UP** or **DOWN** buttons.

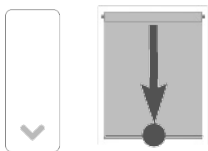


Step 4: **PRESS & HOLD** the **MY/STOP** button until the shade jogs, then release. Check the new limit.



Adjusting the upper limit:

Adjusting the lower limit:



ADD OR DELETE A TRANSMITTER

- a) **PRESS & HOLD** the **PROG button on the back of Transmitter 1** until the shade jogs.
- b) **BRIEFLY PRESS** the **PROG button on the back of Transmitter 2**. The shade jogs.



TRANSMITTER 1:

Must be Previously programmed transmitter - single channel or the channel (1-5) of a multichannel remote.

TRANSMITTER 2:

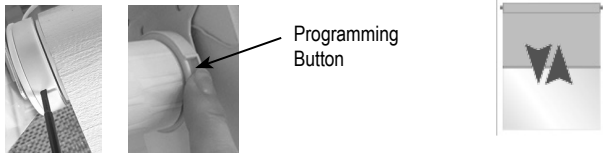
Second transmitter to be added or deleted - single channel or the channel (1-5) of a multichannel remote.

ENABLING SLEEP MODE

Note: Temporary Sleep mode does not apply to the Tilt motor. The shade must be programmed.

This feature temporarily prevents the motor from responding to any previously programmed remote commands.

- 1) **PRESS & HOLD** the **PROGRAMMING button on the motor** (examples below) until the shade jogs.



- 2) **BRIEFLY PRESS** the **PROGRAMMING button**, the shade jogs twice. Sleep Mode is activated.



DISABLING SLEEP MODE

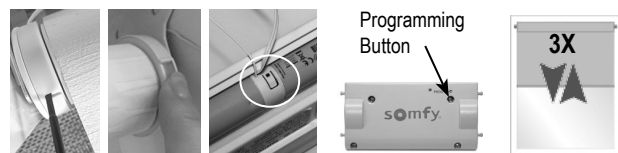
- 3) Press the **PROGRAMMING button on the motor** (see samples above). The shade jogs and the remote commands are enabled.



NOTE: If step 3 is not performed, Sleep Mode will automatically disable after approximately 10 minutes.

RESETTING THE MOTOR TO FACTORY MODE

PRESS & HOLD the **PROGRAMMING BUTTON on the motor** (shown below) for approximately 12 seconds during which the shade will jog 3 separate times.



All programmed remotes and limit settings will be erased. Motor is now reset to **factory mode**. Motor limits will need to be re-established.

SETTING FAVORITE "MY" POSITION

- 1) Move the shade to the desired position and press **MY/STOP** button to stop the shade.
- 2) **PRESS & HOLD** the **MY/STOP** button until the shade jogs. The "my" favorite position is set.

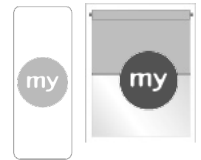


- 3) To set a **NEW "my" position**, repeat steps 1 and 2.

TO DELETE: First send the shade to the current "my" position, then **PRESS & HOLD** the **MY/STOP** button for 5 seconds. The shade will jog to confirm deletion.

USING THE FAVORITE "MY" POSITION

While the shade is stationary, a simple press of the **MY/STOP** button will move the shade to the "my" favorite position.



If the shade is in motion, first stop it by pressing **MY/STOP** and then **MY/STOP** again to send it to the "my" position.



ADJUSTING THE SPEED

LED blinks alternately in green and yellow during the adjustment.

- 1) Move the shade away from the end limits. **PRESS & HOLD** the **UP, MY/STOP** and **DOWN** buttons simultaneously, until the shade jogs. The shade will move up and down automatically in 10 second cycles.



- 2) To increase the speed, **PRESS & HOLD** the **UP** button until the shade jogs. Repeat as needed.

Maximum speed is achieved when the shade jogs 3 times in each direction when the **UP** button is pressed.

- 3) To decrease the speed, **PRESS & HOLD** the **DOWN** button until the shade jogs. Repeat as needed.

Minimum speed is achieved when the shade jogs 3 times in each direction when the **DOWN** button is pressed.

- 4) To confirm the new speed, **PRESS & HOLD** the **MY/STOP** button until the shade jogs.

